

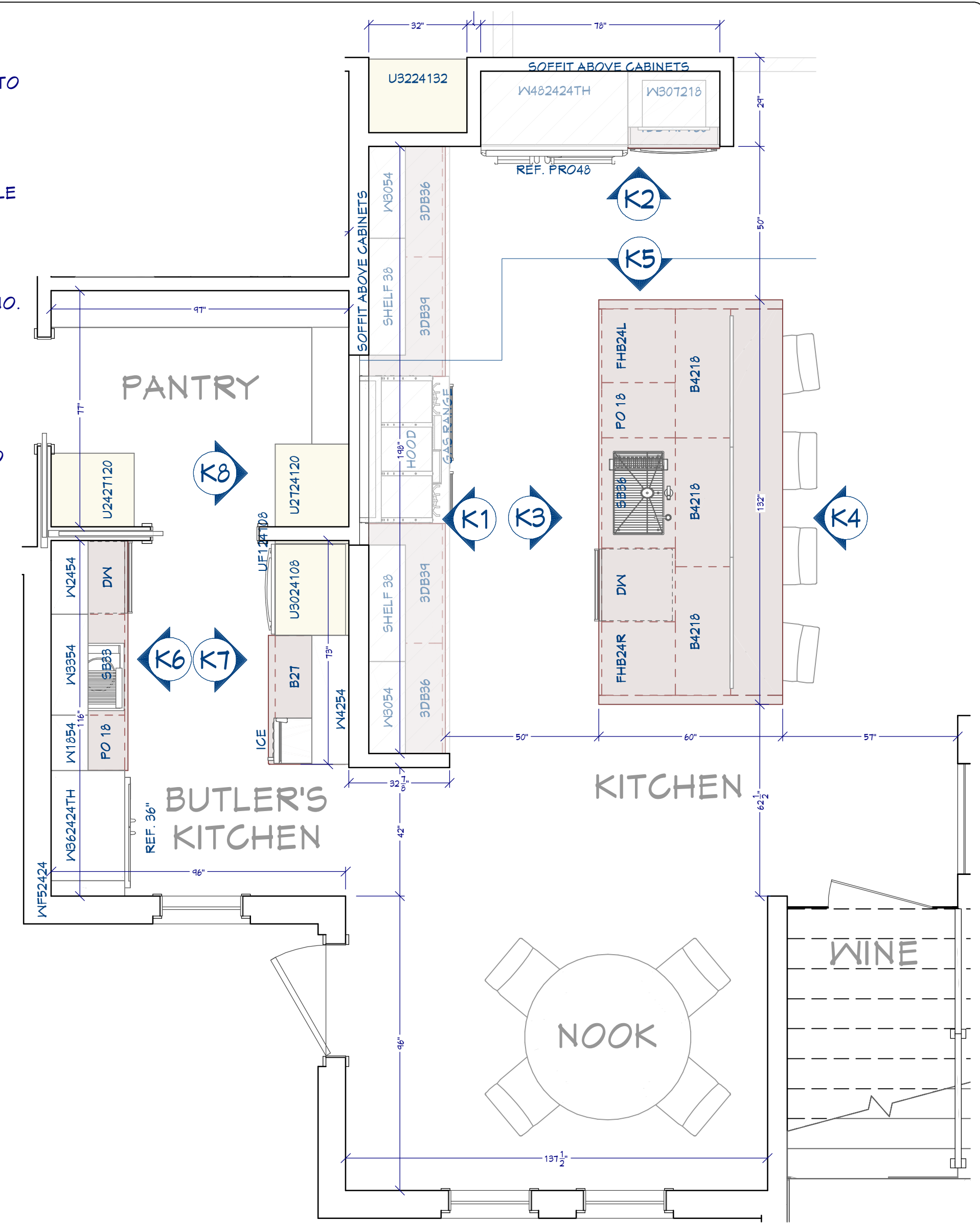


KITCHEN & CABINET NOTES:

- 1 ALL CABINETS FRAMELESS, MAPLE OR ALDER
- 2 CONFIRM FINISH & STAIN/PAINT WITH CLIENT PRIOR TO ORDERING
- 3 CONFIRM DOOR & DRAWER STYLES WITH CLIENT PRIOR TO ORDERING
- 4 INSTALL HARDWARE ON SITE
- 5 INSTALL CROWN MOLDING ON SITE; CONFIRM PROFILE AND DIMENSION WITH HOME OWNER
- 6 CABINET SUPPLIER RESPONSIBLE FOR FINAL MEASUREMENTS & CABINET OPENINGS FOR APPLIANCES SPECIFICATIONS
- 7 ALL APPLIANCES TO BE ON DEDICATED CIRCUITS, UNO. REFER TO APPLIANCE SPECIFICATIONS FOR AMP/ VOLTAGE REQUIREMENTS
- 8 USE MIN 6" DUCT FOR HOOD. CONFIRM HOOD IS 600 CFM MIN.
- 9 CONFIRM FINAL MATERIALS FOR BACKSPASH AND COUNTERTOP WITH CLIENT PRIOR TO ORDERING
- 10 ALL DRAWERS TO BE TONGUE & GROOVE; GLIDES TO BE SOFT CLOSE
- 11 LED STRIP LIGHTS FOR WALL CABINETS AND UNDER ISLAND
- 12 UNDERCOUNTER GFCI ELECTRICAL PLUGS
- 13 COUNTER FABRICATION: CONFIRM ALL FIXTURE MEASUREMENTS AND CENTER LINES
- 14 TEXTURED GLASS PER PLAN

CABINET SCHEDULE

ITEM NO.	QTY	DESCRIPTION	FINISH	HEIGHT	DEPTH	WIDTH	NOTES
C01	10896	2	36"	24"	30"		CABINET FRONT: DRAWER WIDTH: 22.5 IN, HEIGHT: 8 IN; DRAWER HEIGHT: 22.5 IN, HEIGHT: 10 IN; DRAWER WIDTH: 22.5 IN, HEIGHT: 10 IN
C02	10896	2	36"	24"	30"		CABINET FRONT: DRAWER WIDTH: 22.5 IN, HEIGHT: 8 IN; DRAWER HEIGHT: 22.5 IN, HEIGHT: 10 IN; DRAWER WIDTH: 22.5 IN, HEIGHT: 10 IN
C03	34010	1	42"	18"	34 1/2"		CABINET FRONT: DOOR WIDTH: 34 IN, HEIGHT: 28 IN
C04	34024	1	24"	24"	34 1/2"		CABINET FRONT: DOOR WIDTH: 34 IN, HEIGHT: 24 IN
C05	34210	1	42"	18"	34 1/2"		CABINET FRONT: DOOR WIDTH: 34 IN, HEIGHT: 28 IN
C06	34224	1	24"	24"	34 1/2"		CABINET FRONT: DOOR WIDTH: 34 IN, HEIGHT: 24 IN
C07	34210	1	42"	18"	34 1/2"		CABINET FRONT: DOOR WIDTH: 34 IN, HEIGHT: 28 IN
C08	34224	1	24"	24"	34 1/2"		CABINET FRONT: DOOR WIDTH: 34 IN, HEIGHT: 24 IN
C09	34210	1	42"	18"	34 1/2"		CABINET FRONT: DOOR WIDTH: 34 IN, HEIGHT: 28 IN
C10	34224	1	24"	24"	34 1/2"		CABINET FRONT: DOOR WIDTH: 34 IN, HEIGHT: 24 IN
C11	34210	1	42"	18"	34 1/2"		CABINET FRONT: DOOR WIDTH: 34 IN, HEIGHT: 28 IN
C12	34224	1	24"	24"	34 1/2"		CABINET FRONT: DOOR WIDTH: 34 IN, HEIGHT: 24 IN
C13	34210	1	42"	18"	34 1/2"		CABINET FRONT: DOOR WIDTH: 34 IN, HEIGHT: 28 IN
C14	34224	1	24"	24"	34 1/2"		CABINET FRONT: DOOR WIDTH: 34 IN, HEIGHT: 24 IN
C15	34210	1	42"	18"	34 1/2"		CABINET FRONT: DOOR WIDTH: 34 IN, HEIGHT: 28 IN
C16	34224	1	24"	24"	34 1/2"		CABINET FRONT: DOOR WIDTH: 34 IN, HEIGHT: 24 IN
C17	34210	1	42"	18"	34 1/2"		CABINET FRONT: DOOR WIDTH: 34 IN, HEIGHT: 28 IN
C18	34224	1	24"	24"	34 1/2"		CABINET FRONT: DOOR WIDTH: 34 IN, HEIGHT: 24 IN
C19	34210	1	42"	18"	34 1/2"		CABINET FRONT: DOOR WIDTH: 34 IN, HEIGHT: 28 IN
C20	34224	1	24"	24"	34 1/2"		CABINET FRONT: DOOR WIDTH: 34 IN, HEIGHT: 24 IN
C21	34210	1	42"	18"	34 1/2"		CABINET FRONT: DOOR WIDTH: 34 IN, HEIGHT: 28 IN
C22	34224	1	24"	24"	34 1/2"		CABINET FRONT: DOOR WIDTH: 34 IN, HEIGHT: 24 IN

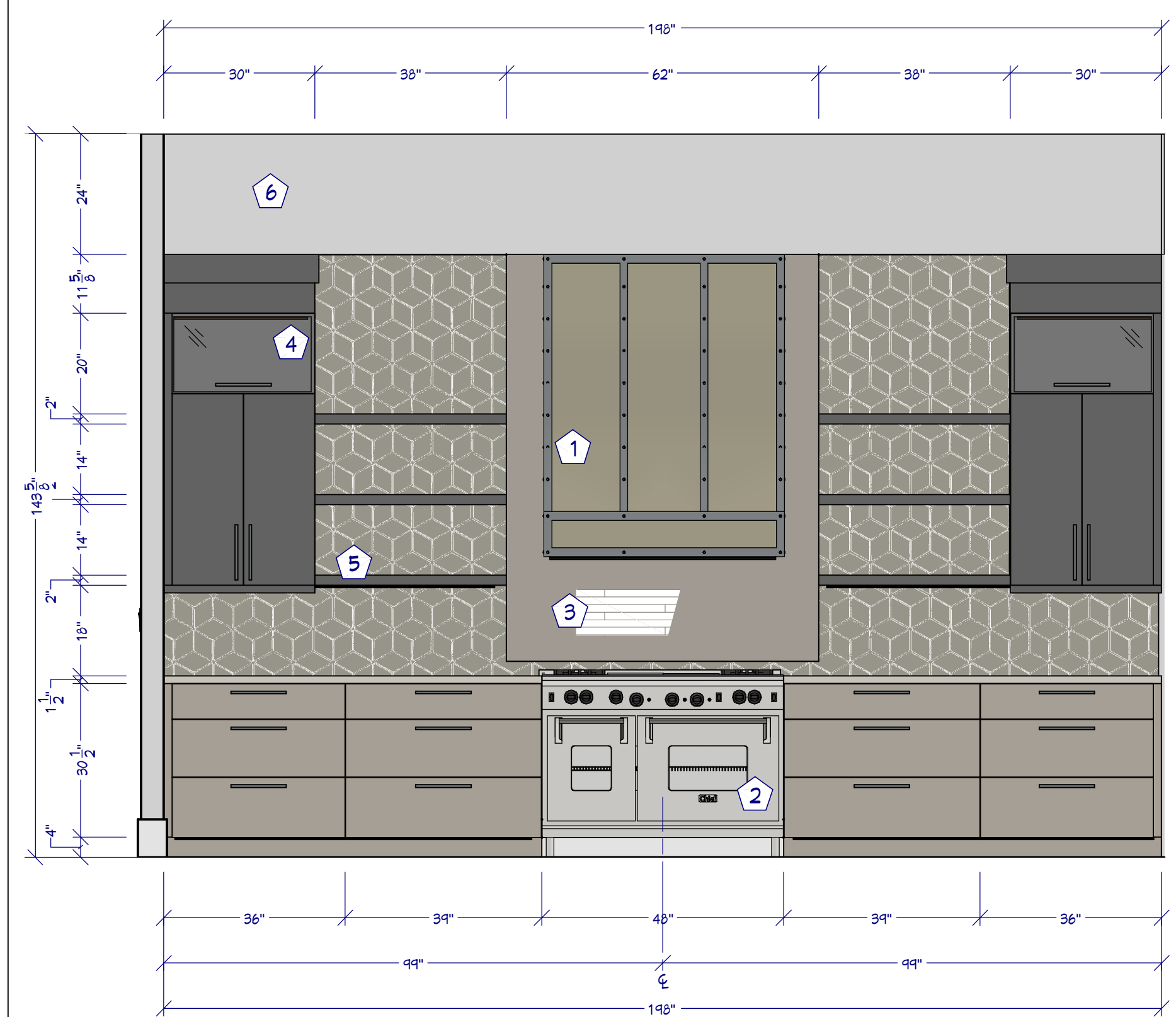


KITCHEN FLOOR PLAN
3/8"=1'

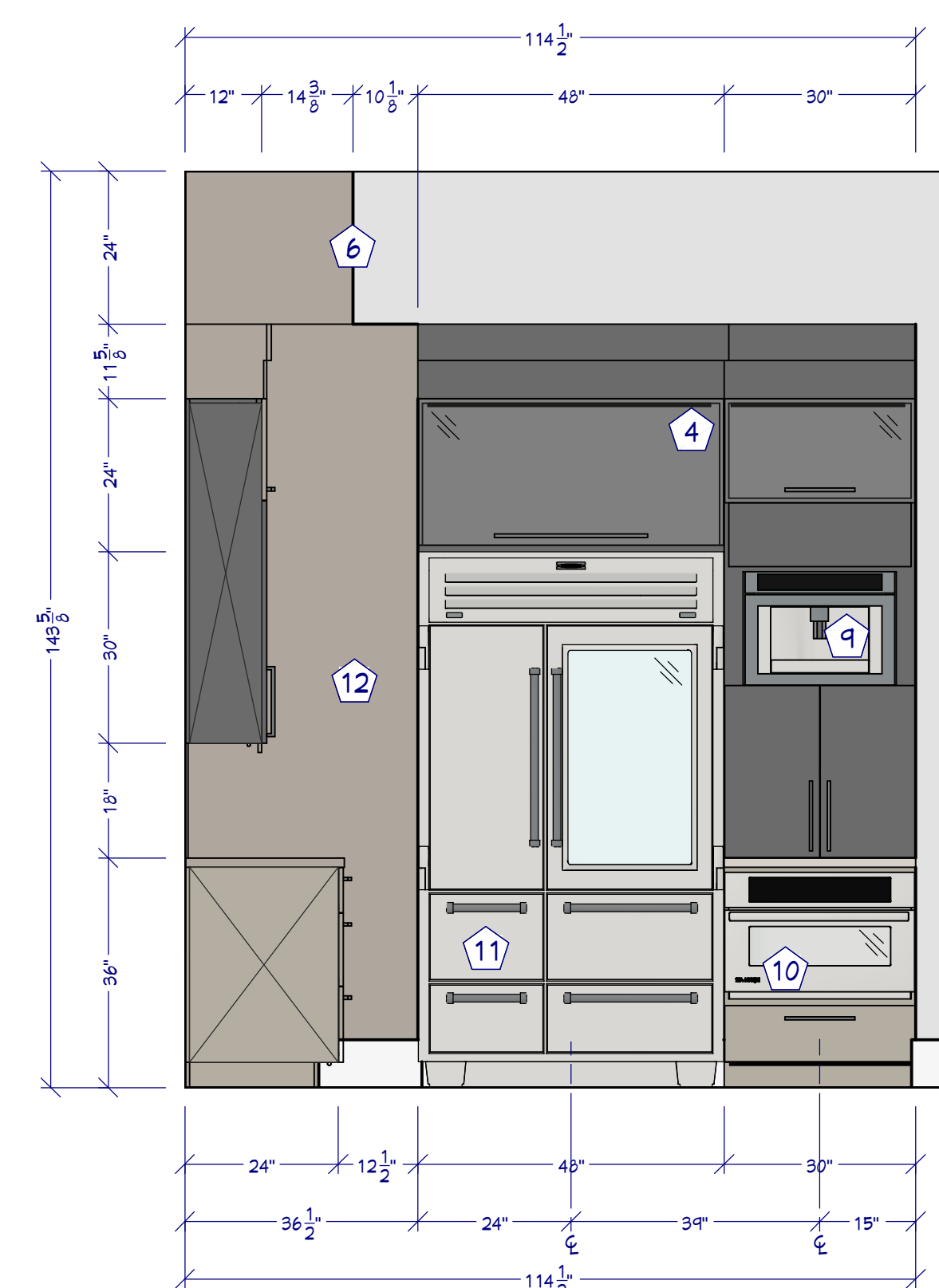


KITCHEN KEY NOTES

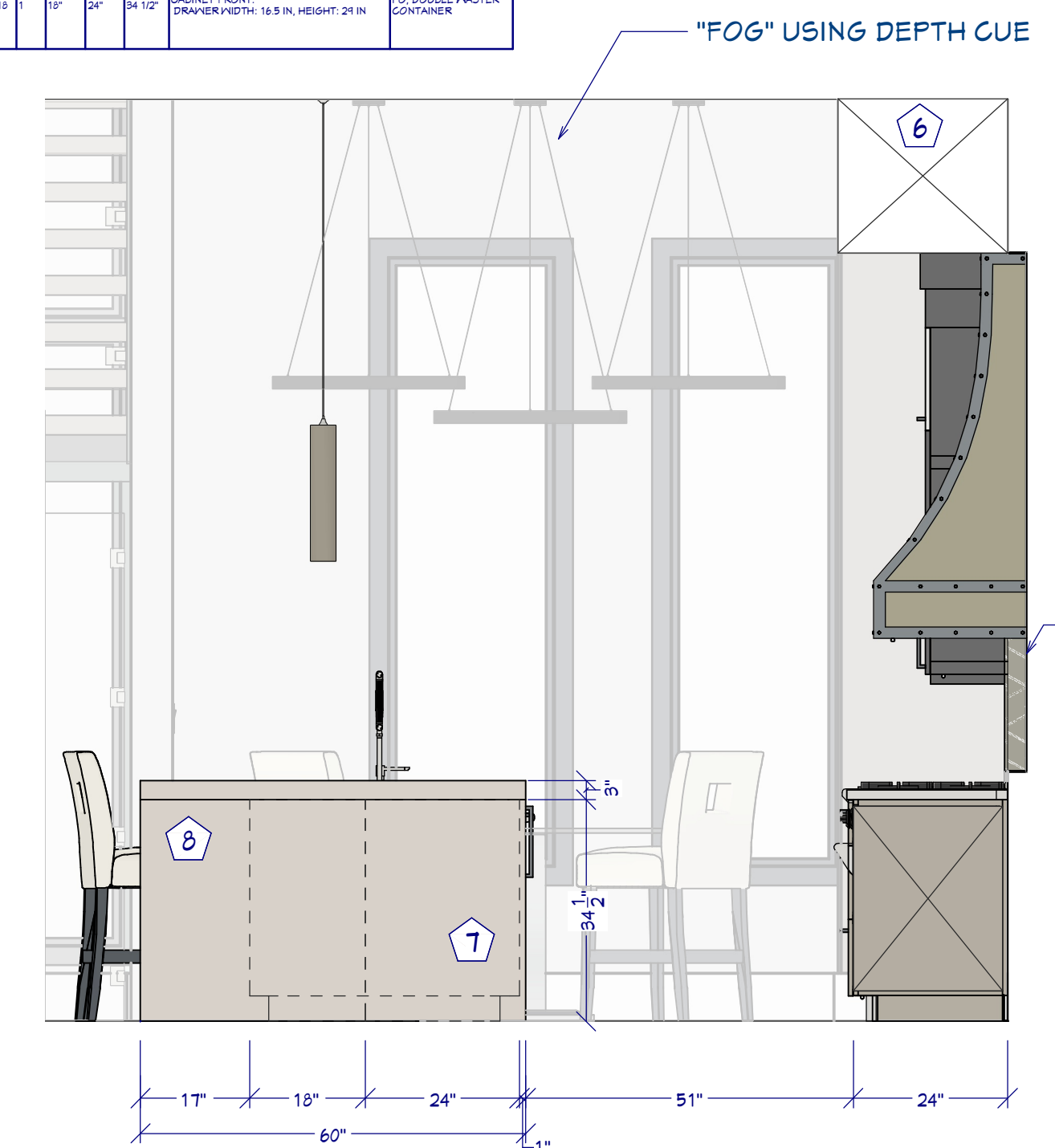
- 1 CUSTOM COOK HOOD
- 2 GAS COOK RANGE / ELECTRIC OVEN
- 3 NICHE / INSET BACKSPASH
- 4 RAIN WATER GLASS
- 5 SHELF W/ LED STRIP LIGHT
- 6 SOFFIT
- 7 HIDDEN LINE CABINET BOXES
- 8 WATERFALL COUNTER
- 9 BUILT-IN COFFEE STATION
- 10 MICROWAVE DRAWER
- 11 SUBZERO PRO48 REF.
- 12 INTERIOR 4" WALL
- 13 WASTE PULLOUT
- 14 WATERFALL
- 15 LED STRIP LIGHT



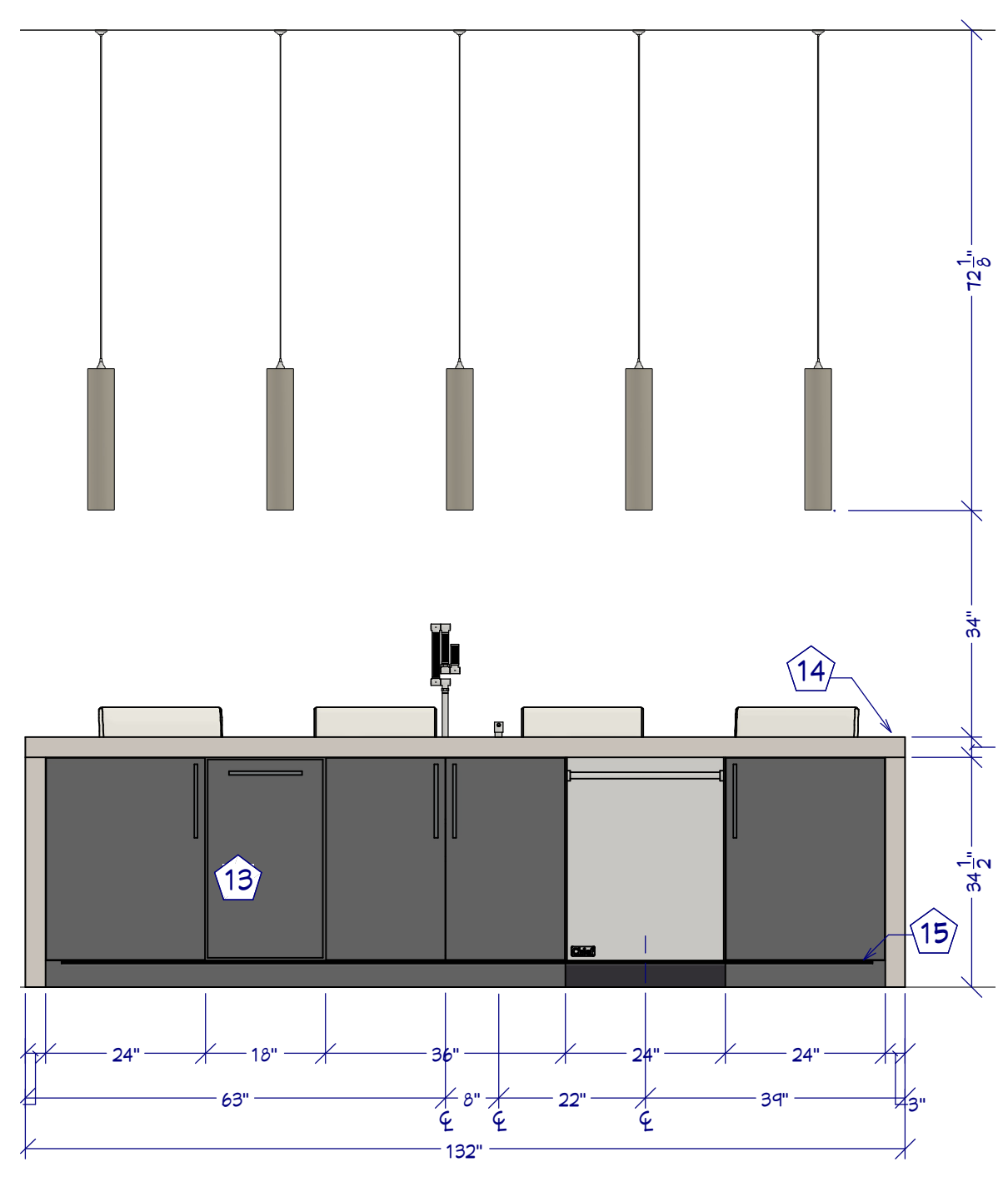
K1 MAIN WALL ELEVATION
1/2"=1'



K2 SIDE WALL ELEVATION
1/2"=1'



K4 SIDE ISLAND ELEVATION
1/2"=1'



K6 FRONT ISLAND ELEVATION
1/2"=1'