

CHIC COTTAGE: Chief Architect SAMPLE PLAN



REVISION TABLE		NUMBER	DATE	REVISOR	DESCRIPTION

TITLE PAGE

CHIC COTTAGE

DRAWINGS PROVIDED BY:  
Chief Architect Software  
[www.chiefarchitect.com](http://www.chiefarchitect.com)  
208.492.4433

DATE:

3/17/2016

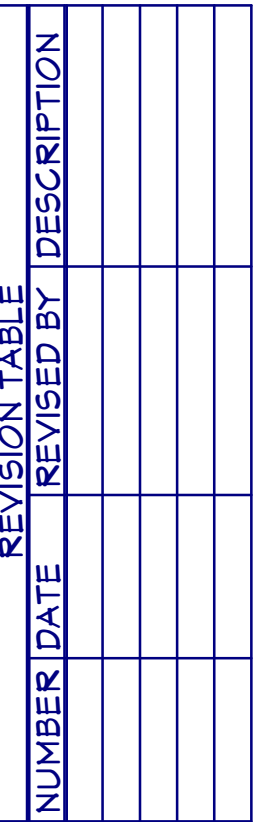
SCALE:

SEE VIEW

SHEET:

1





## EXTERIOR ELEVATIONS

# CHIC COTTAGE

DRAWINGS PROVIDED BY:

**Chief Architect Software**  
[www.chiefarchitect.com](http://www.chiefarchitect.com)  
208.482.4433

DATE:

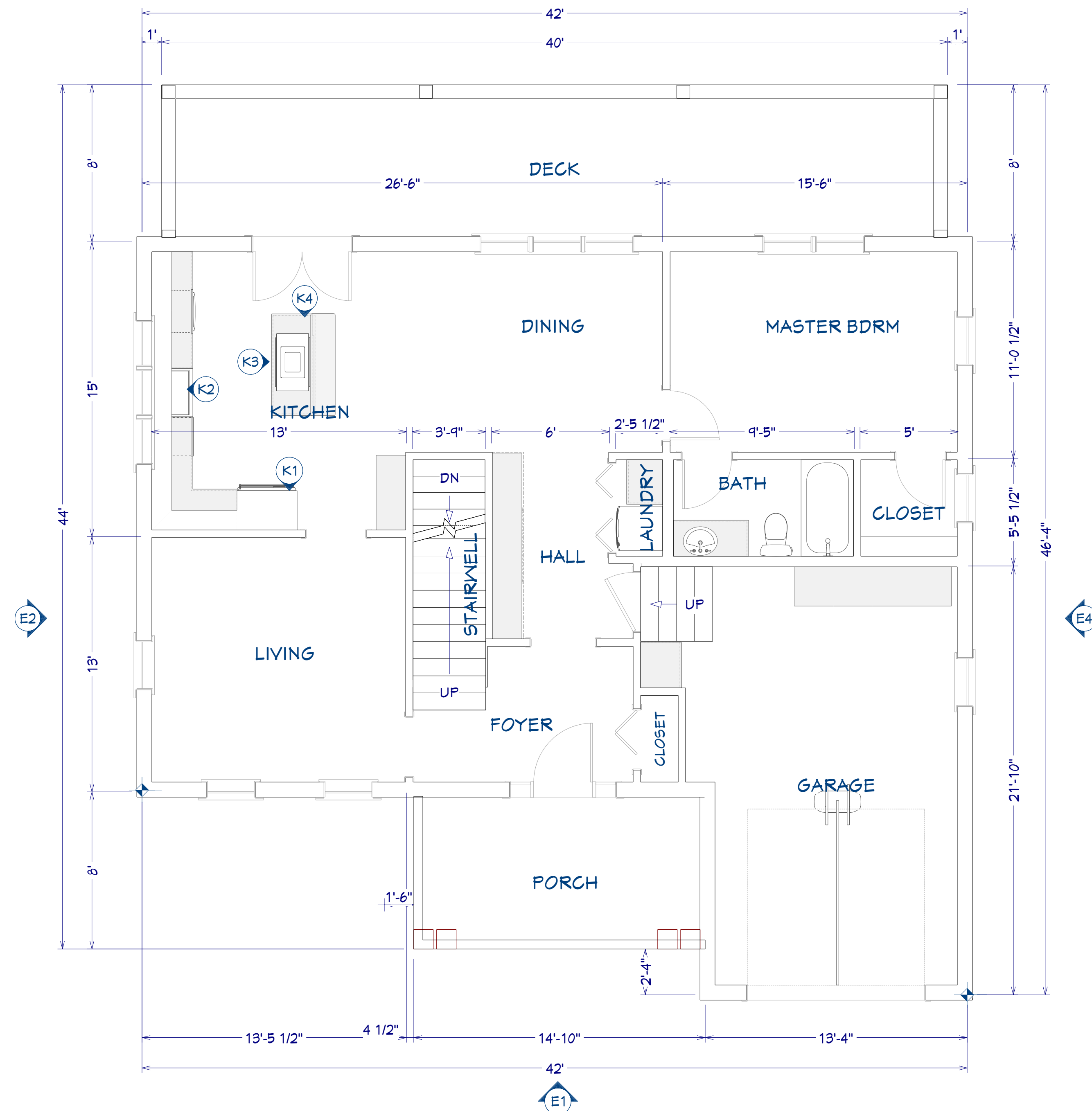
3/17/2016

SCALE:

SEE VIEW

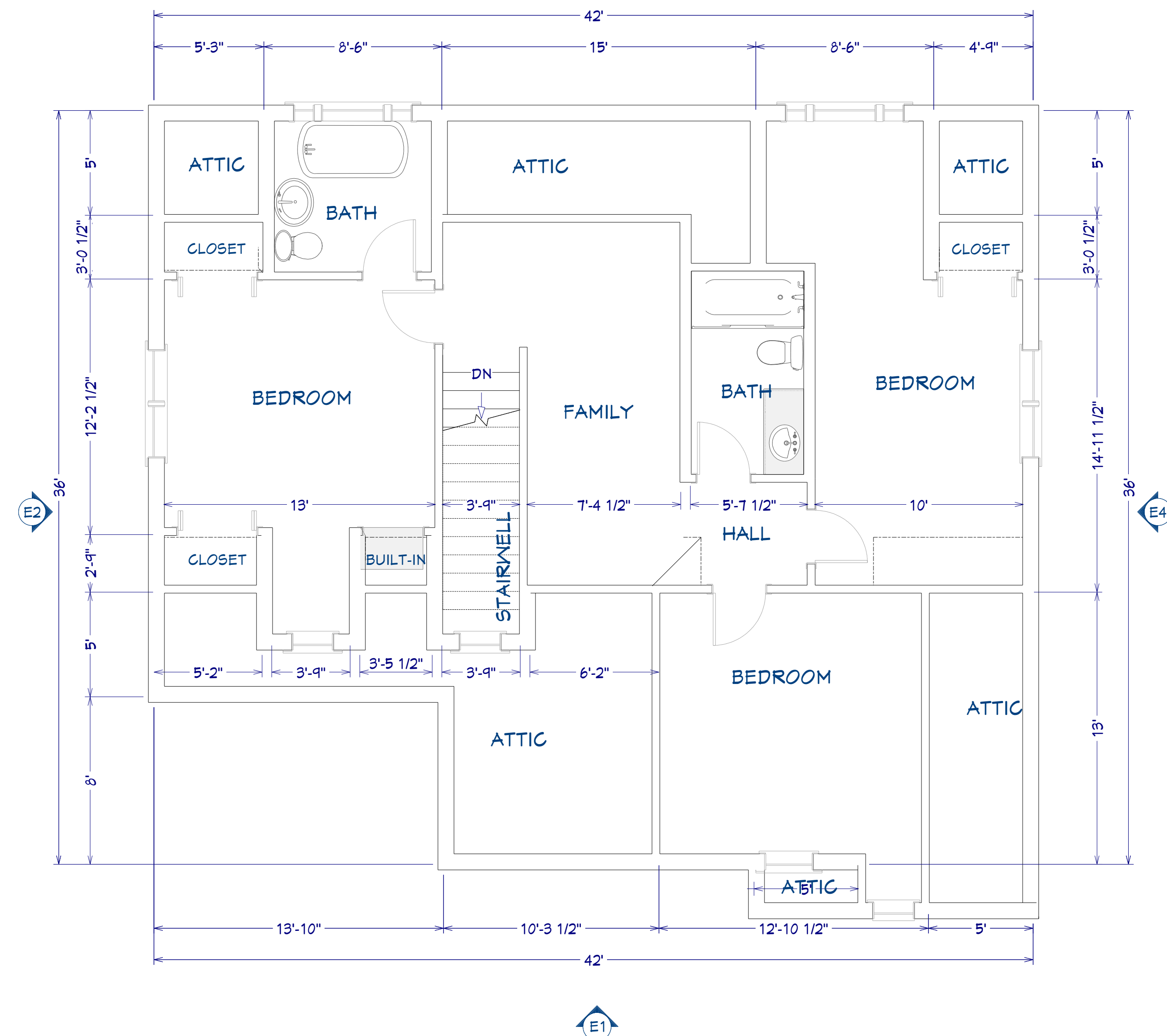
SHEET:





FIRST FLOOR PLAN

LIVING AREA: 953 sq ft 1/4" = 1'



SECOND FLOOR PLAN

LIVING AREA: 981 sq ft 1/4" = 1'



REVISION TABLE	
NUMBER	DATE

FLOOR PLAN  
LAYOUTS

PACIFIC COTTAGE

DRAWINGS PROVIDED BY:  
Chief Architect Software  
www.chiefarchitect.com  
208.482.4433

DATE:

3/17/2016

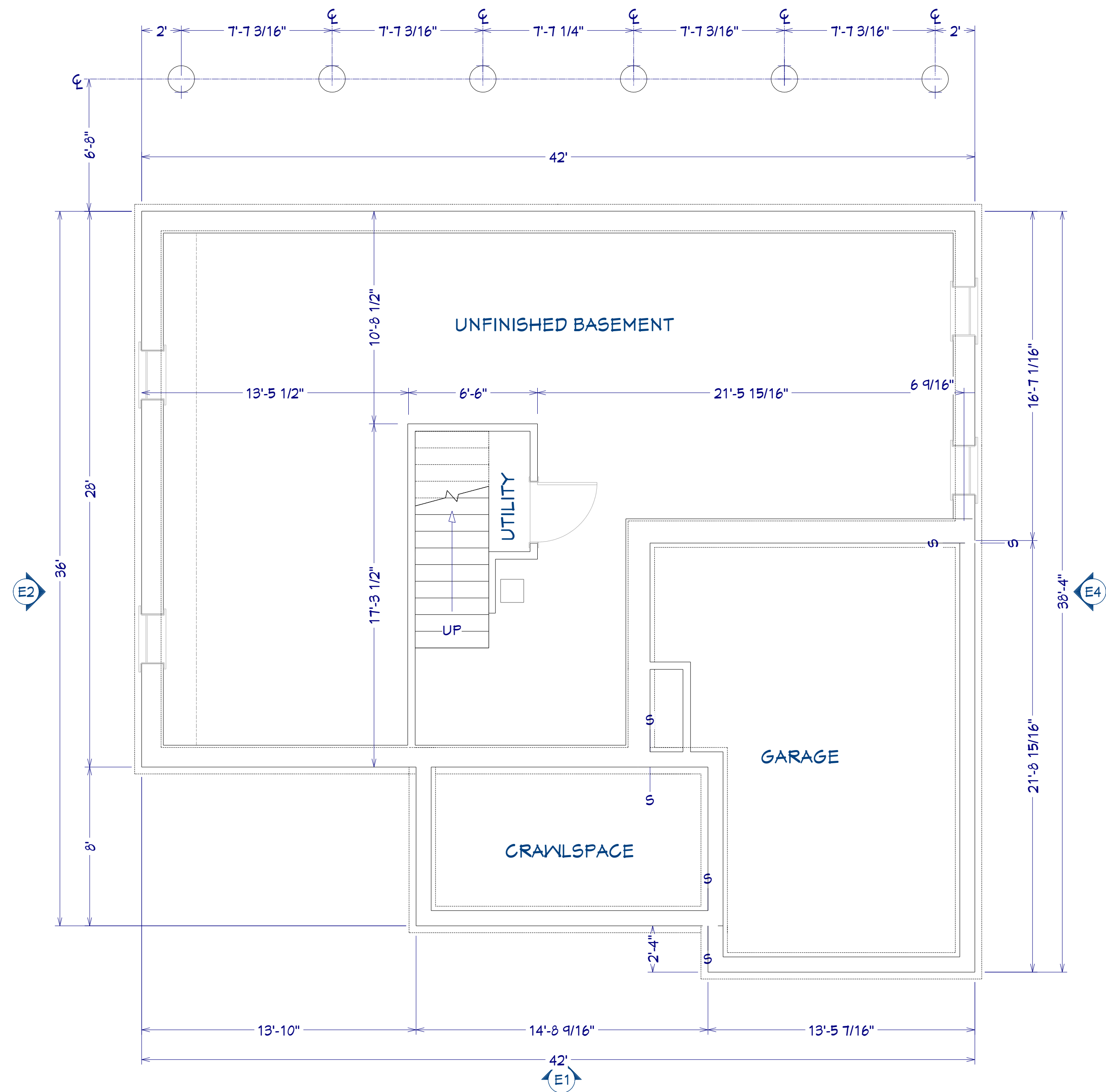
SCALE:

SEE VIEW

SHEET:





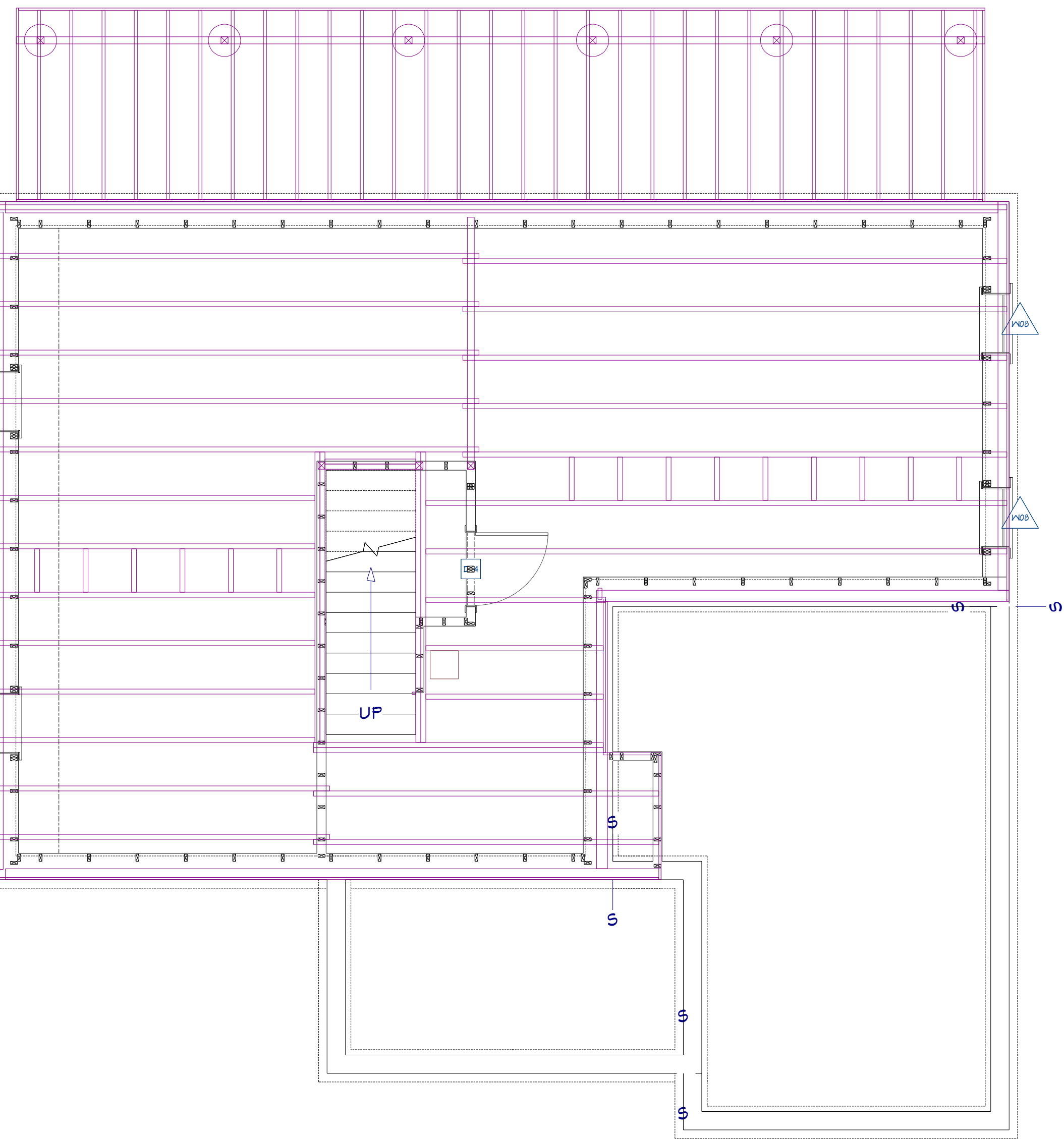


**BASEMENT FLOOR PLAN**

LIVING AREA: 1113 sq ft 1/4" = 1'

**BASEMENT FLOOR FRAMING**

1/4" = 1'



**FRAMING NOTES:**

PROVIDE DOUBLE JSTS. UNDER ALL WALLS RUNNING PARALLEL TO JOISTS.

PROVIDE POSITIVE VENTILATION AT EA. END OF EA. RAFTER SPACE AT VAULTED CEILING AREAS.

PROVIDE FIRE BLOCKING, DRAFT STOPS AND FIRE STOPS AS PER I.B.C. SEC. R502.12.

PROVIDE POSITIVE CONNECTIONS AT EACH END OF ALL POSTS AND COLUMNS TO RESIST LATERAL DISPLACEMENT.

**DOOR AND WINDOW NOTES:**

EVERY BEDROOM SHALL BE PROVIDED WITH AN EGRESS WINDOW WITH FINISH SILL HEIGHT NOT GREATER THAN 44" ABOVE THE FINISH FLOOR HEIGHT AND SHALL HAVE A MINIMUM OPENABLE AREA OF 5.7 SQ. FT. EGRESS WINDOWS SHALL NOT HAVE AN OPENABLE AREA LESS THAN 20" WIDE OR 24" HIGH.

ALL WALK-THRU DOORS SHALL BE SOLID CORE

INTERIOR DOORS SHALL BE PAINTED. ENTRY DOOR TO BE DEFINED BY HOME OWNER PRIOR ORDERING

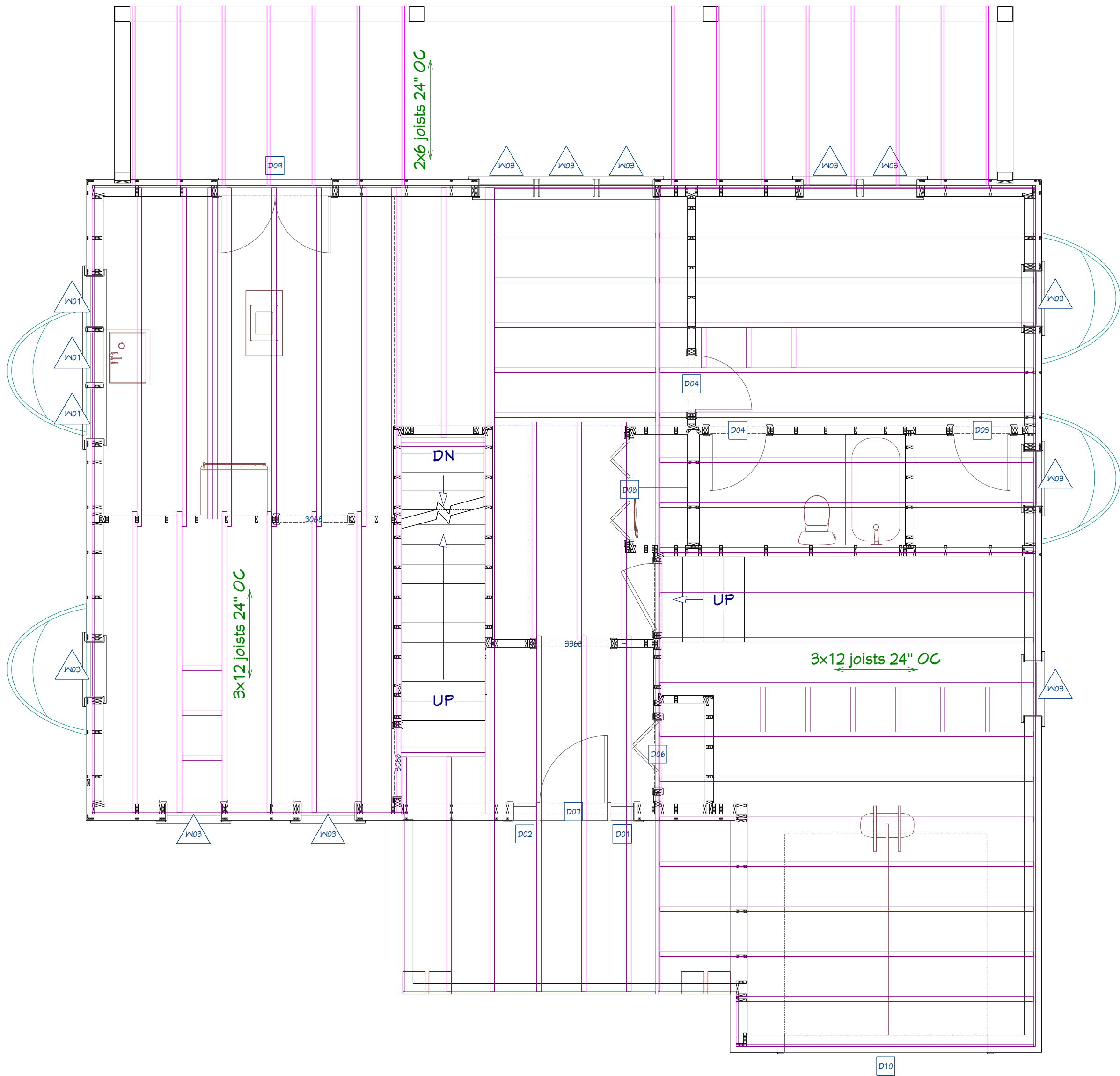
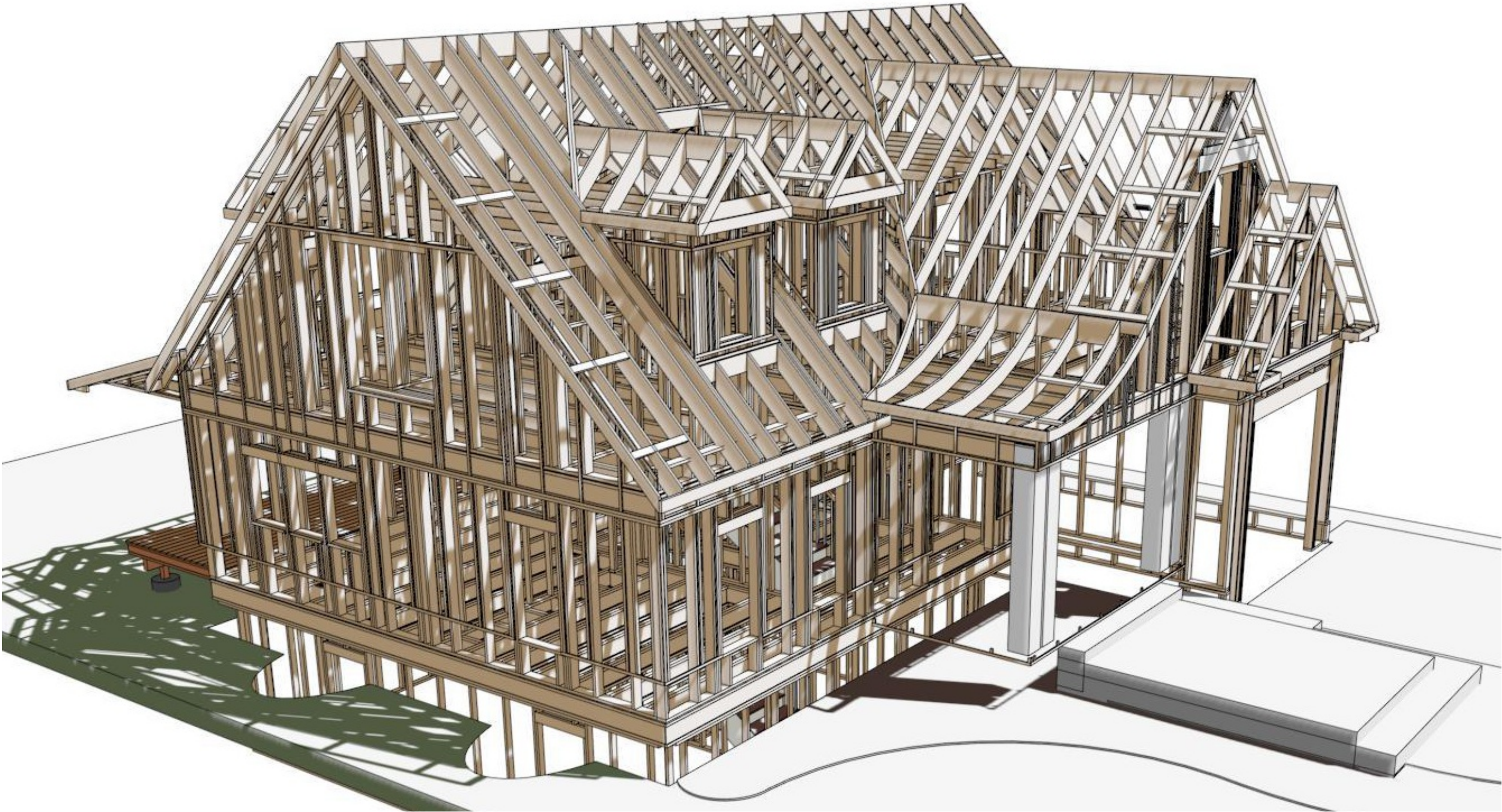
DOORS BETWEEN GARAGE AND LIVING AREA SHALL BE 1-3/4" TIGHT FITTING SOLID CORE DOORS WITH A RATING OF 60 MINUTES. DOOR SHALL BE SELF CLOSING

EXTERIOR EXIT DOORS WILL BE 36" MIN. NET CLEAR DOORWAY SHALL BE 32" MIN. DOOR SHALL BE OPENABLE FROM INSIDE WITHOUT THE USE OF A KEY OR ANY SPECIAL KNOWLEDGE OR EFFORT. GLAZING IN DOORS SHALL BE DUAL PANE SAFETY GLASS WITH MIN. U-VALUE OF 0.60



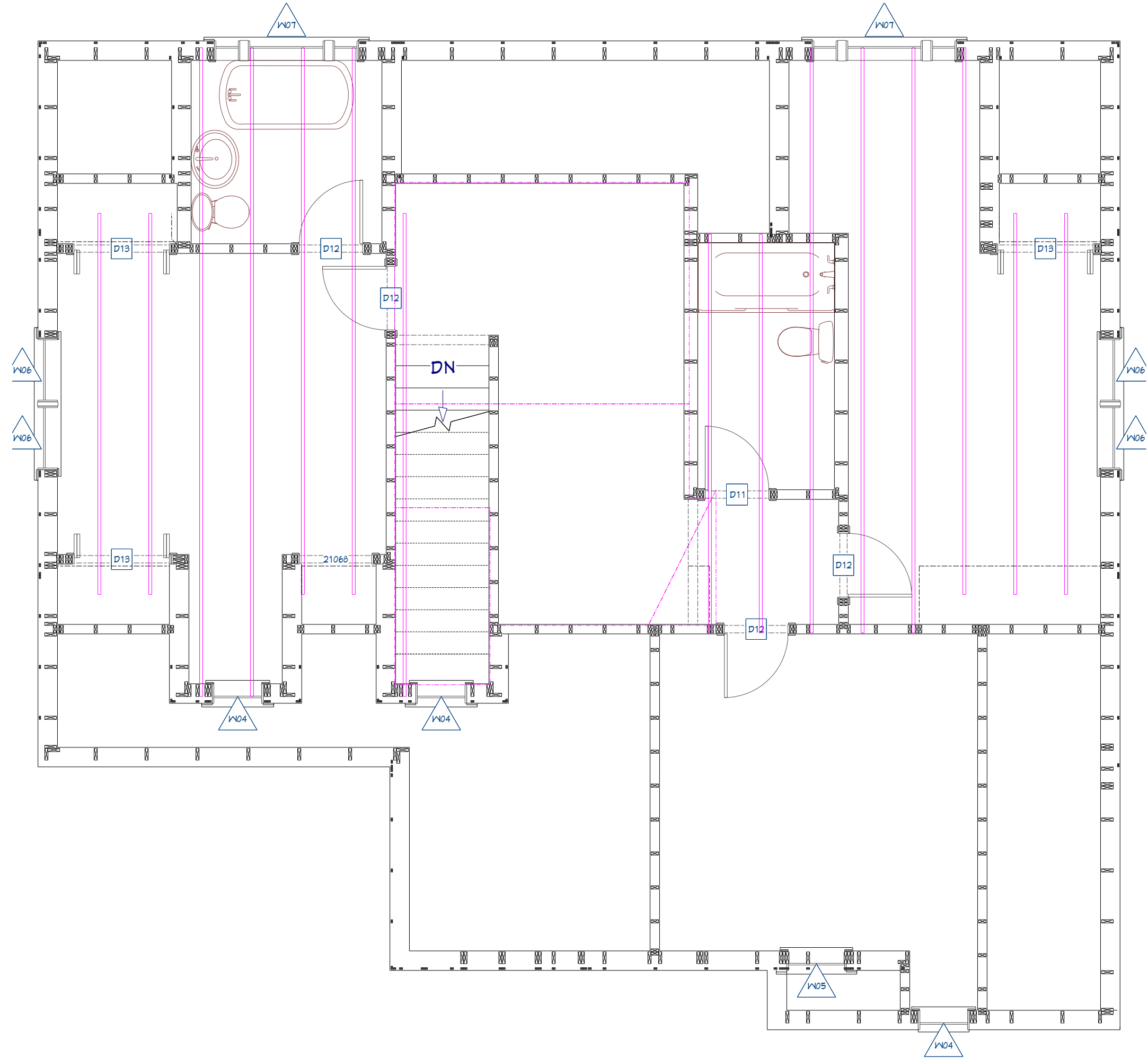
WINDOW SCHEDULE							
NUMBER	LABEL	QTY	FLOOR	SIZE	R/O	EGRESS	DESCRIPTION
W01	2430SC	3	1	2430SC	29"X37 1/4"		SNGL CASEMENT-HR
W03	2650DH	11	1	2650DH	31"X61"	YES	DOUBLE HUNG
W04	2036DH	3	2	2036DH	25"X43"		DOUBLE HUNG
W05	2436SC	1	2	2436SC	29"X43"	YES	SNGL CASEMENT-HR
W06	2660DH	4	2	2660DH	31"X73"	YES	DOUBLE HUNG
W07	5850MU	2	2	5850	69"X61"		MULLED UNIT
W08	2646DH	4	0	2646DH	31"X55"		DOUBLE HUNG

DOOR SCHEDULE							
NUMBER	LABEL	QTY	FLOOR	SIZE	R/O	DESCRIPTION	HEADER
D01	1068	1	1	1068 L EX	14"X83"	EXT. HINGED-GLASS	2X6X11" (2)
D02	1068	1	1	1068 R EX	14"X83"	EXT. HINGED-GLASS	2X6X11" (2)
D03	2668	1	1	2668 L IN	32"X82 1/2"	HINGED-DOOR F04	2X6X35" (2)
D04	2668	2	1	2668 R IN	32"X82 1/2"	HINGED-DOOR F04	2X6X35" (2)
D05	3068	1	1	3068 L EX	38"X83"	EXT. HINGED-DOOR F05	2X6X41" (2)
D06	3068	1	1	3068 R	38"X82 1/2"	2 DR. BIFOLD-LOUVERED	2X6X41" (2)
D07	3068	1	1	3068 R EX	38"X83"	EXT. HINGED-DOOR E21	2X6X41" (2)
D08	4668	1	1	4668 L/R	56"X82 1/2"	4 DR. BIFOLD-LOUVERED	2X8X59" (2)
D09	5068	1	1	5068 L/R EX	62"X83"	EXT. DOUBLE HINGED-GLASS	2X8X65" (2)
D10	9090	1	1	9090	110"X111"	GARAGE-GARAGE DOOR CHD05	2X12X116" (2)
D11	2668	1	2	2668 L IN	32"X82 1/2"	HINGED-DOOR F04	2X6X35" (2)
D12	2668	4	2	2668 R IN	32"X82 1/2"	HINGED-DOOR F04	2X6X35" (2)
D13	3968	3	2	3968 L/R	47"X82 1/2"	4 DR. BIFOLD-LOUVERED	2X6X50" (2)
D14	3068	1	0	3068 L IN	38"X82 1/2"	HINGED-DOOR F04	2X6X41" (2)



FIRST FLOOR FRAMING

1/4" = 1'



SECOND FLOOR CEILING FRAMING

1/4" = 1'



REVISION TABLE		DESCRIPTION
NUMBER	DATE	REVISOR

FRAMING AND  
OPENINGS

CHIC COTTAGE

DRAWINGS PROVIDED BY:  
Chief Architect Software  
www.chiefarchitect.com  
208.482.4433

DATE:

3/17/2016

SCALE:

SEE VIEW

SHEET:

5



ROOF FRAMING / TRUSS NOTES:

TRUSS DRAWING IS FOR ILLUSTRATION ONLY. ALL TRUSSES SHALL BE INSTALLED & BRACED TO MANUFACTURERS DRAWINGS & SPECIFICATIONS.

ALL TRUSSES SHALL CARRY MANUFACTURERS STAMP.

ALL TRUSSES WILL NOT BE FIELD ALTERED WITHOUT PRIOR BUILDING DEPT. APPROVAL OF ENGINEERING CALCULATIONS.

ALL TRUSSES SHALL HAVE DESIGN DETAILS & DRAWINGS ON SITE FOR FRAMING INSPECTION.

ALL CONNECTIONS OF RAFTERS, JACK OR HIP TRUSSES TO MAIN GIRDER TO BE PROVIDED BY TRUSS MANUFACTURER.

ALL ROOF FRAMING 24" O.C.

ALL OVERHANGS 16".

INSTALL POLYISOCYANURATE FOAM TYPE INSULATION AT FLOOR AND PLATE LINES, OPENINGS IN PLATES, CORNER STUD CAVITIES AND AROUND DOOR AND WINDOW ROUGH OPENING CAVITIES.

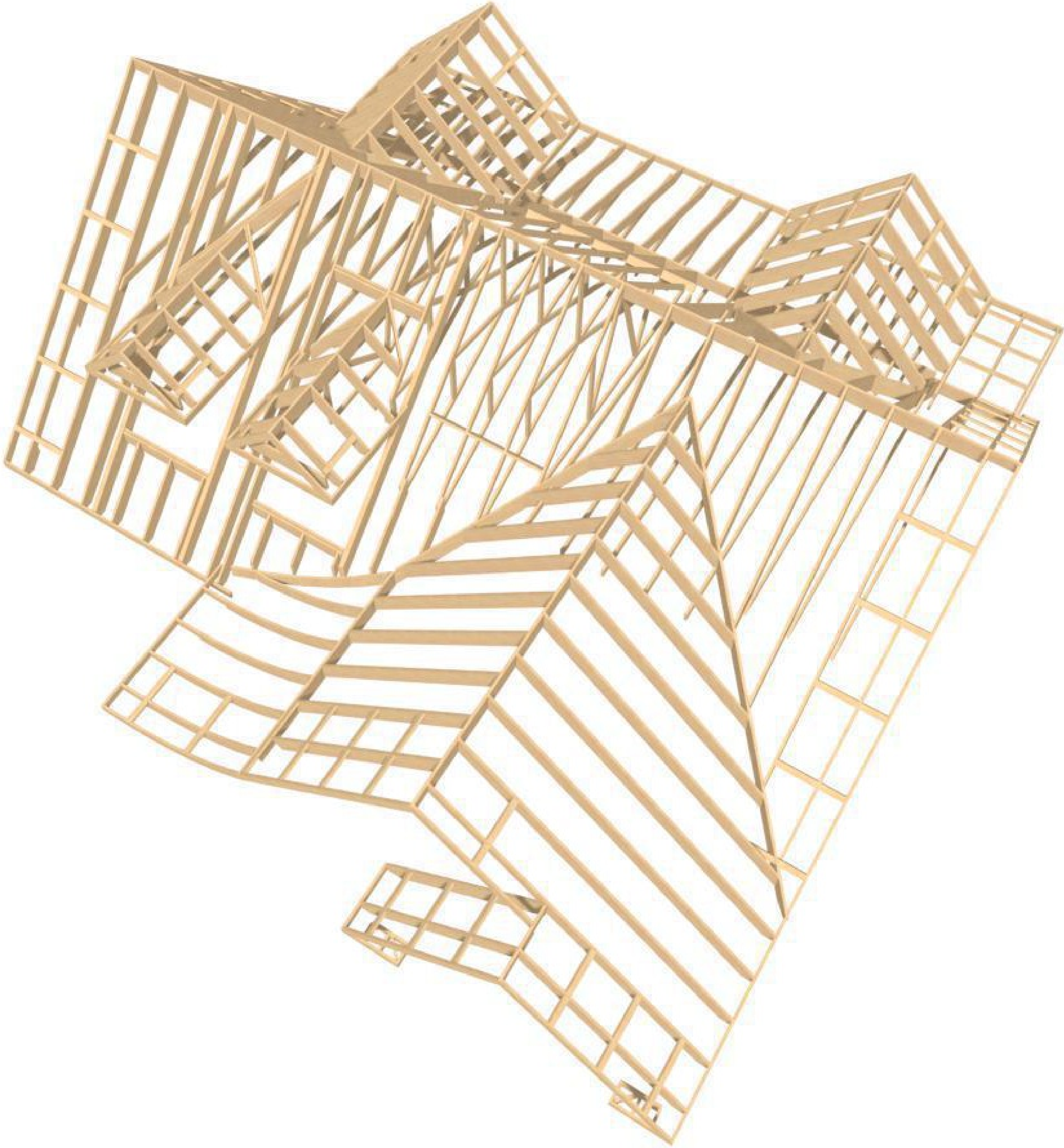
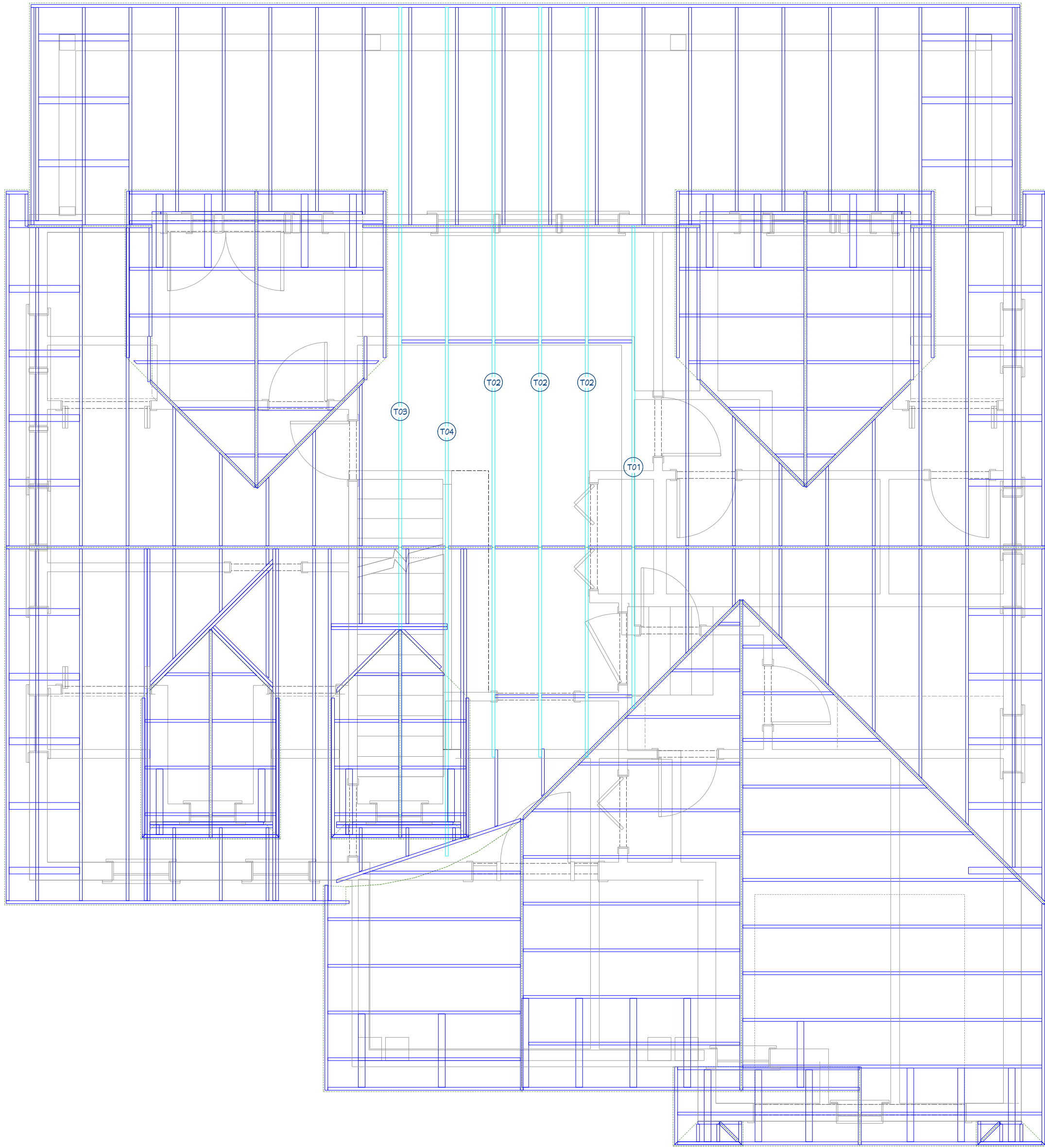
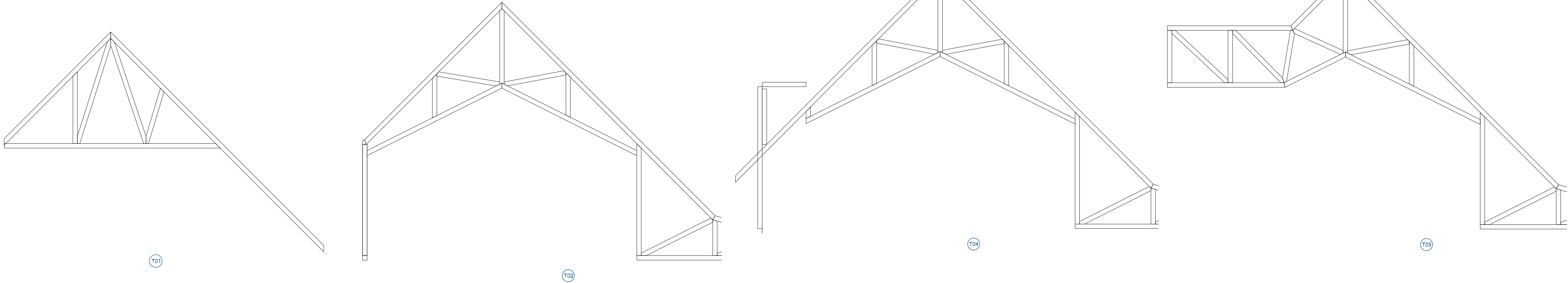
ATTIC VENTILATION: REQUIRED ABOVE HOUSE.

MIN. SNOW LOAD 50 LBS PER SQUARE FOOT.

WALL HEADERS: (2) 2 X 10 DF 2 TYP. UNO

ROOF & FLOOR TRUSS MANUFACTURER: \_\_\_\_\_

Framing Schedule						
Number	Name	Qty	Span	Height	Pitch	Material
T01	Roof Truss	1	247 13/16"	45 5/8"	12" : 2 7/8"	Fir Framing, Copy Lumber
T02	Roof Truss	3	885 3/4"	199 9/16"	12" : 3 1/2"	6" Fir Framing, Copy Lumber
T03	Roof Truss	1	415 3/4"	199 9/16"	12" : 3 1/2"	6" Fir Framing, Copy Lumber
T04	Roof Truss	1	436 1/2"	199 9/16"	12" : 3 1/2"	6" Fir Framing, Copy Lumber



ROOF FRAMING

1/4" = 1'



REVISION TABLE	
NUMBER	DATE

ROOF FRAMING AND CONSTRUCTION

CHIC COTTAGE

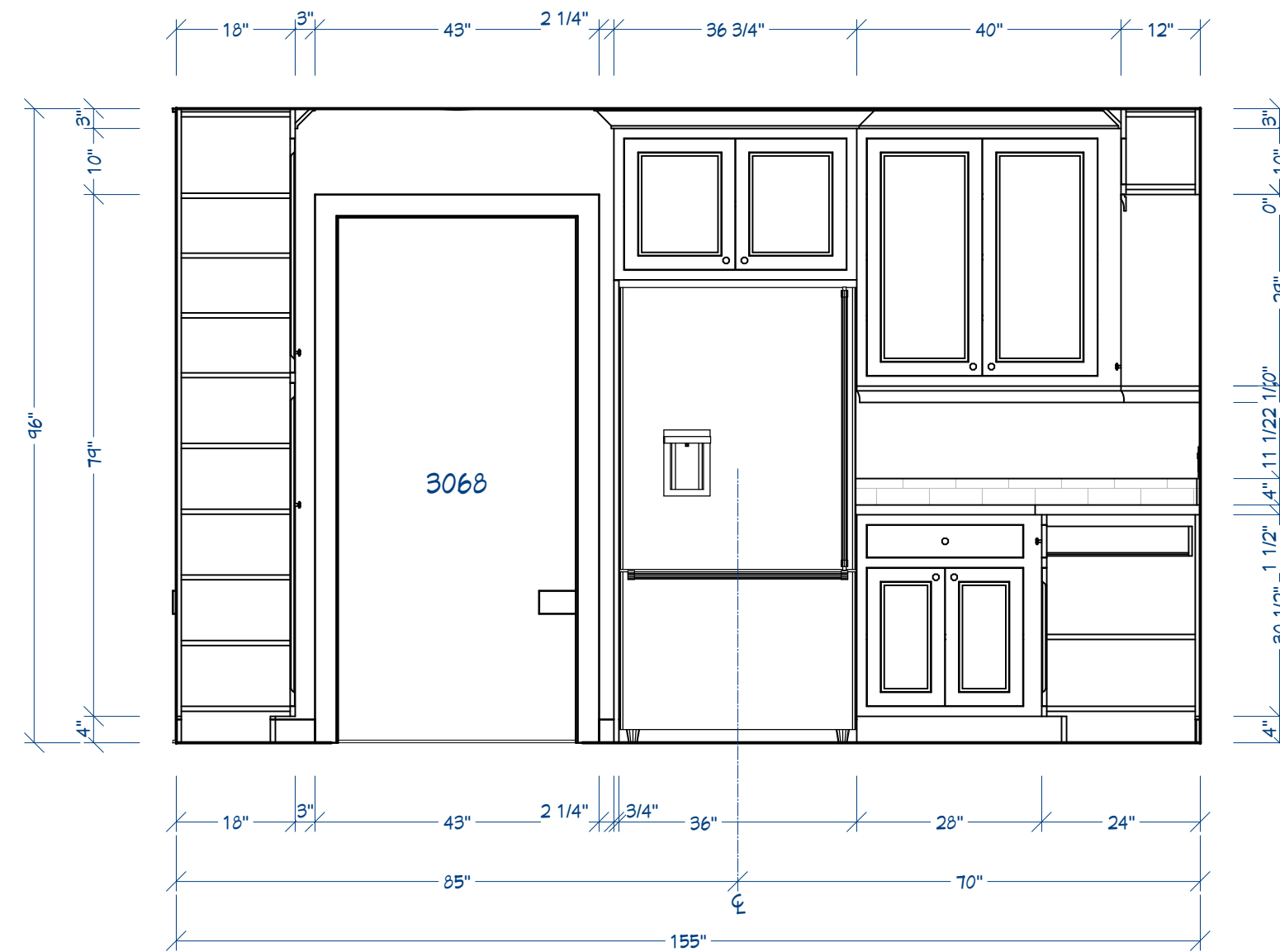
DRAWINGS PROVIDED BY:  
Chief Architect Software  
www.chiefarchitect.com  
208.482.4433

DATE:  
3/17/2016

SCALE:  
SEE VIEW

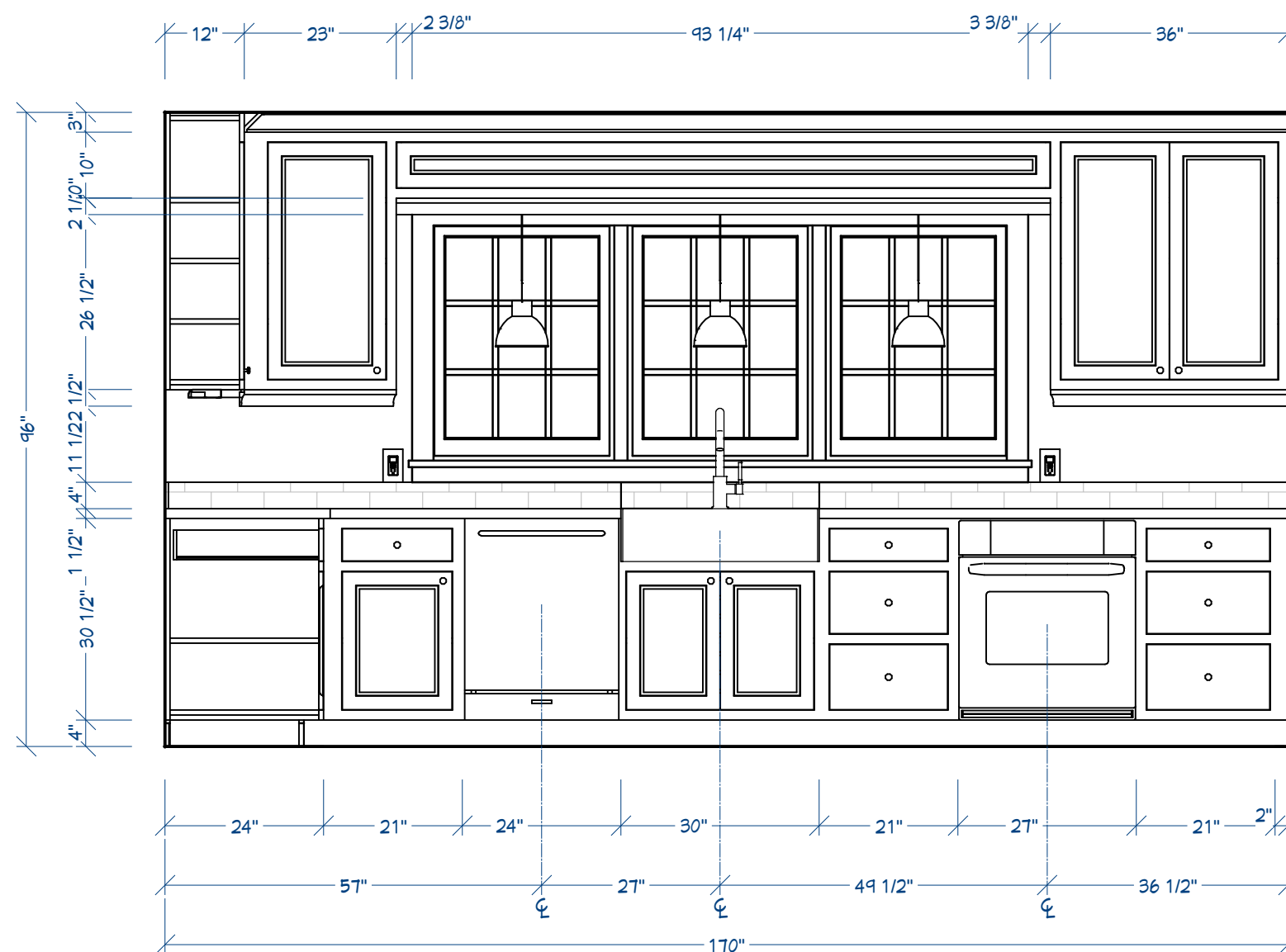
SHEET:  
6





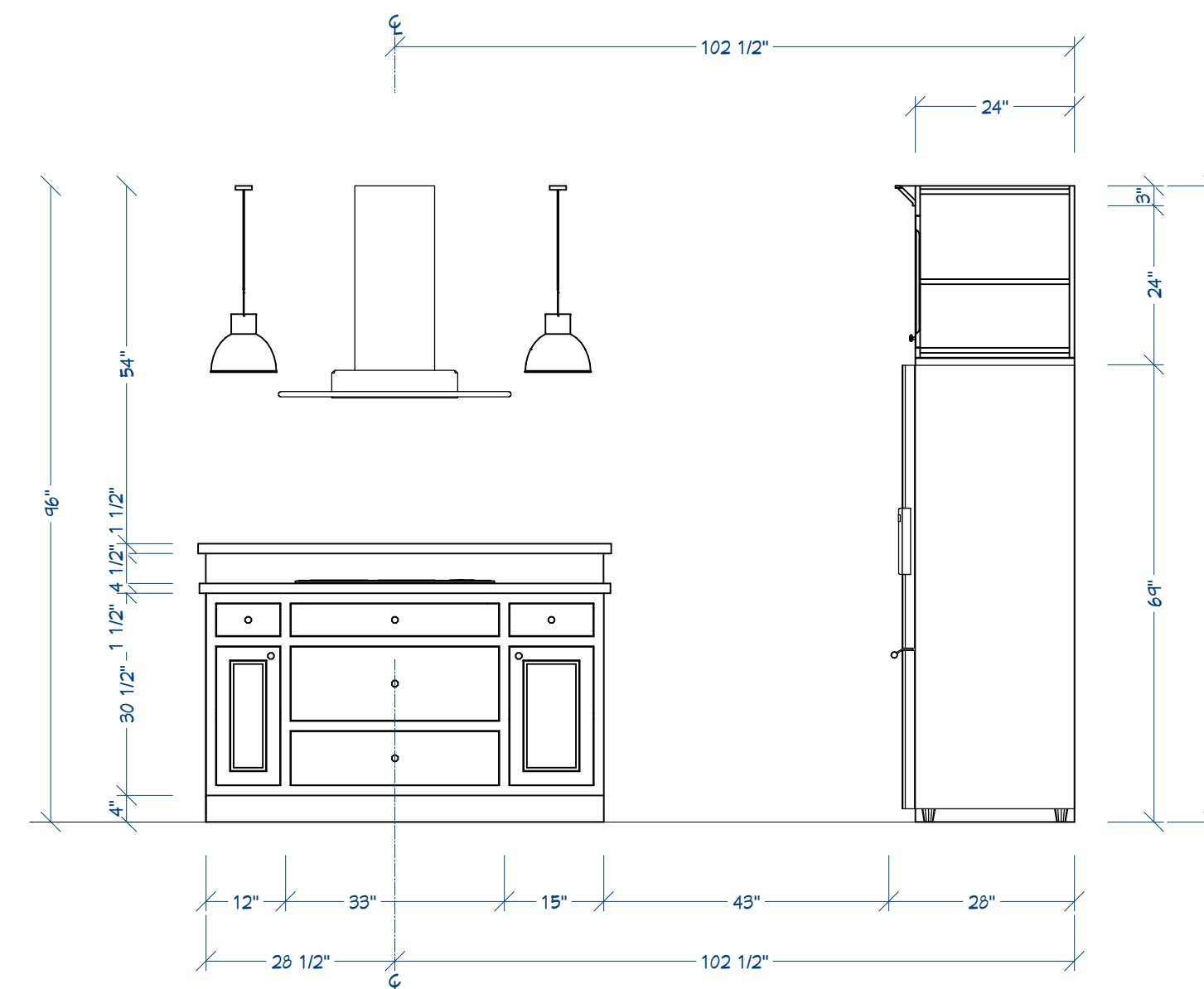
K1 REF. WALL ELEVATION

1/2" = 1'



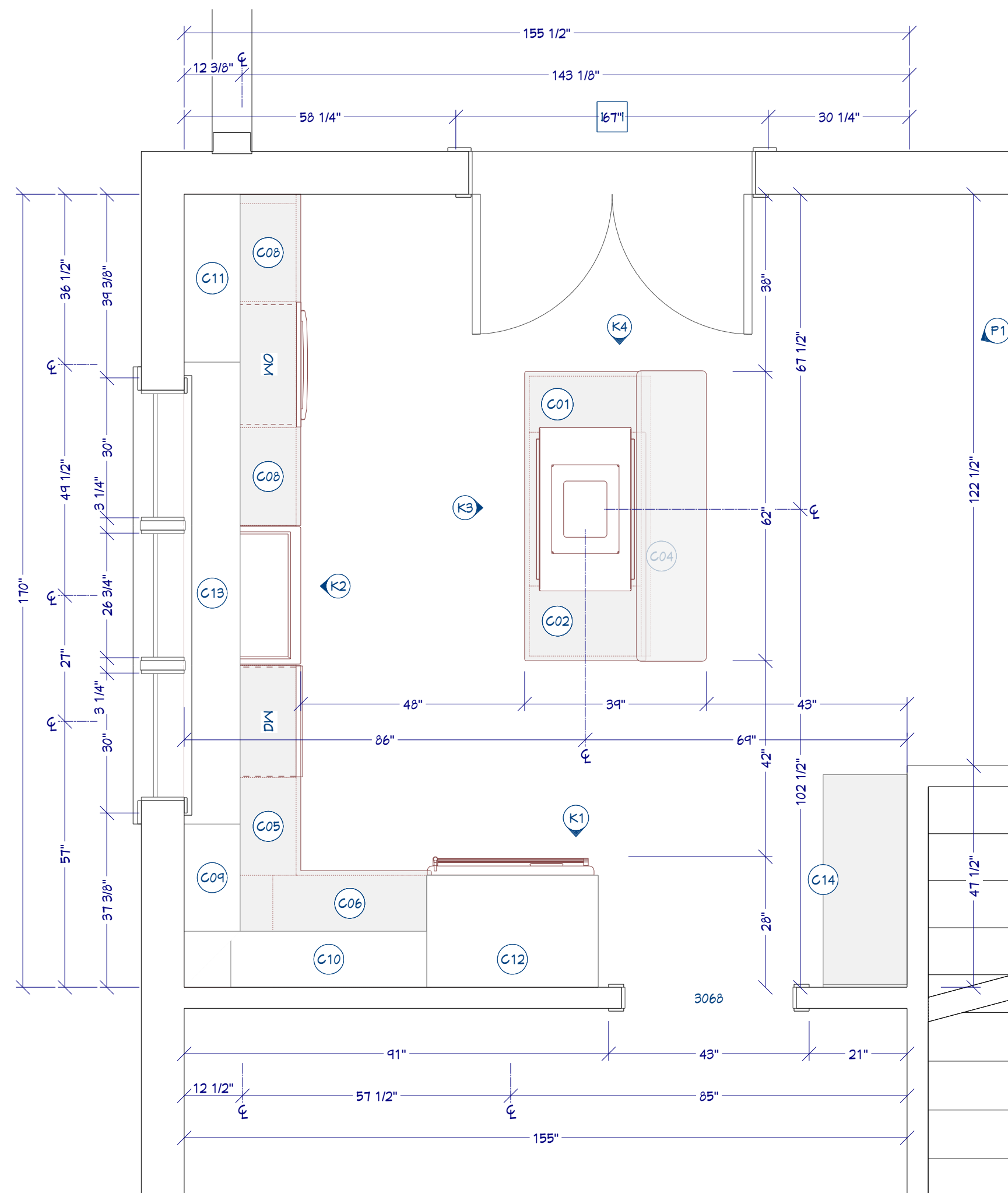
K2 SINK WALL ELEVATION

1/2" = 1'



K3 ISLAND ELEVATION

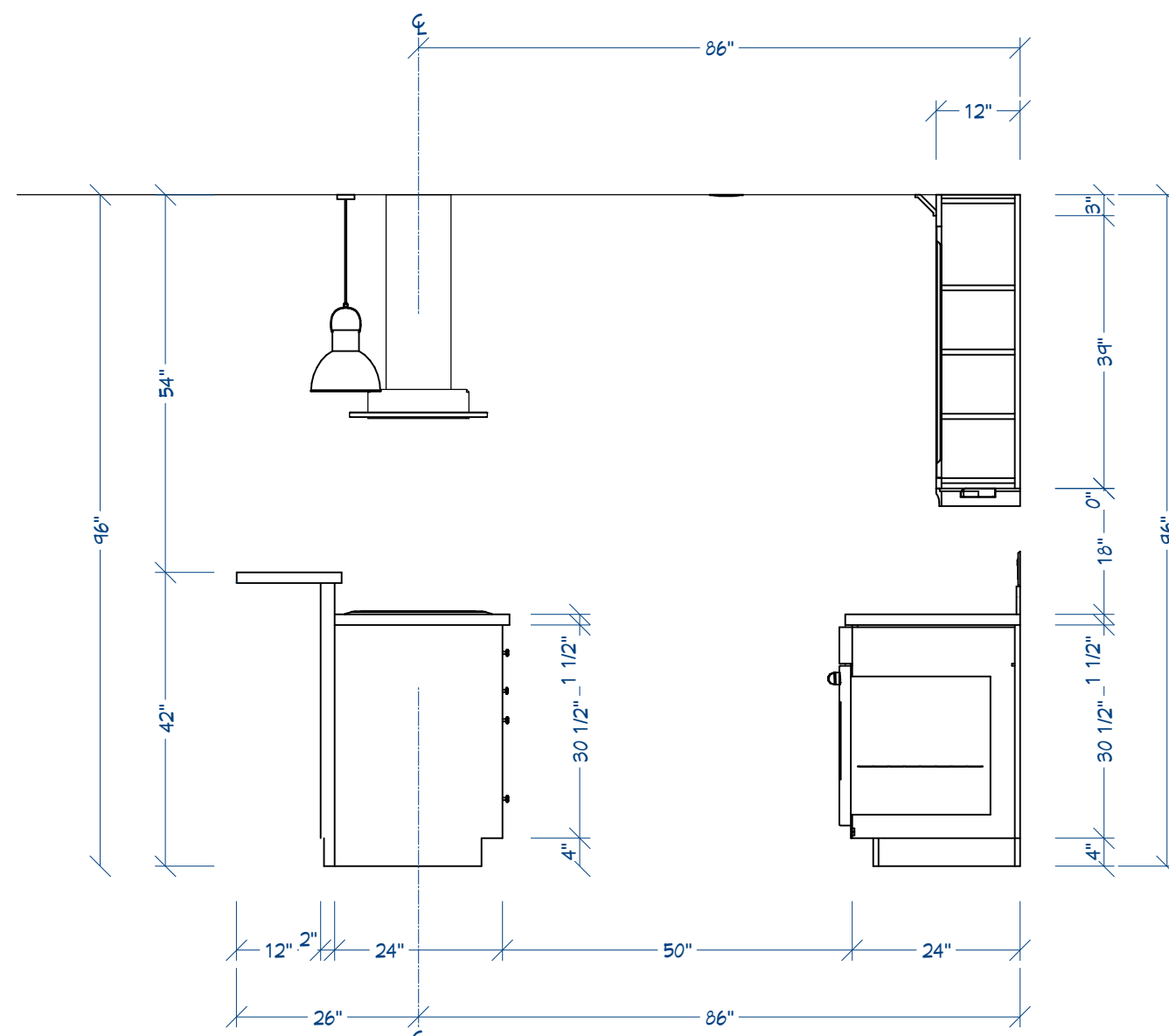
1/2" = 1'



KITCHEN PLAN

AREA: 161 sq ft

1/2" = 1'



K4 ISLAND ELEVATION

1/2" = 1'

NUMBER	LABEL	QTY	FLOOR	WIDTH	DEPTH	HEIGHT	DESCRIPTION	ROOM NAME
C01	B12L	1	1	12"	24"	36"	BASE CABINET	KITCHEN
C02	B15R	1	1	15"	24"	36"	BASE CABINET	KITCHEN
C03	B302B	1	1	30"	24"	28"	BASE CABINET	KITCHEN
C04	B60242	1	1	60"	2"	42"	BASE CABINET	KITCHEN
C05	BCB21L	1	1	21"	24"	36"	BASE CABINET	KITCHEN
C06	BCB33	1	1	33"	24"	36"	BASE CABINET	KITCHEN
C07	RB33	1	1	33"	24"	36"	BASE CABINET	KITCHEN
C08	3DB21	2	1	21"	24"	36"	BASE CABINET	KITCHEN
C09	BCW2342L	1	1	23"	12"	42"	WALL CABINET	KITCHEN
C10	BCW4242	1	1	42"	12"	42"	WALL CABINET	KITCHEN
C11	W3642	1	1	36"	12"	42"	WALL CABINET	KITCHEN
C12	W372624	1	1	36 3/4"	24"	25 15/16"	WALL CABINET	KITCHEN
C13	W4913	1	1	49"	12"	13"	WALL CABINET	KITCHEN
C14	U451896	1	1	45"	18"	96"	UTILITY CABINET	KITCHEN
C15	B1221R	1	1	12"	21"	36"	BASE CABINET	BATH
C16	5B3321	1	1	33"	21"	36"	BASE CABINET	BATH
C17	U301890	1	1	30"	18"	90"	UTILITY CABINET	HALL
C18	U331890	1	1	32 1/2"	18"	90"	UTILITY CABINET	HALL
C19	U481890	1	1	48"	18"	90"	UTILITY CABINET	HALL
C20	B2421R	1	1	24"	21"	36"	BASE CABINET	LAUNDRY
C21	B21	1	1	21"	24"	36"	BASE CABINET	GARAGE
C22	U242490R	4	1	24"	24"	90"	UTILITY CABINET	GARAGE
C23	3DB1222	1	2	12"	22"	36"	BASE CABINET	BATH
C24	5B3622	1	2	36"	22"	36"	BASE CABINET	BATH
C25	U342480	1	2	34"	24"	79 1/2"	UTILITY CABINET	BUILT-IN



P1 KITCHEN PERSPECTIVE

NO SCALE



NUMBER	DATE	REVISION	DESCRIPTION

KITCHEN DESIGN,  
ELEVATIONS,  
SCHEDULES

CHIC COTTAGE

DRAWINGS PROVIDED BY:  
Chief Architect Software  
www.chiefarchitect.com  
208.482.4433

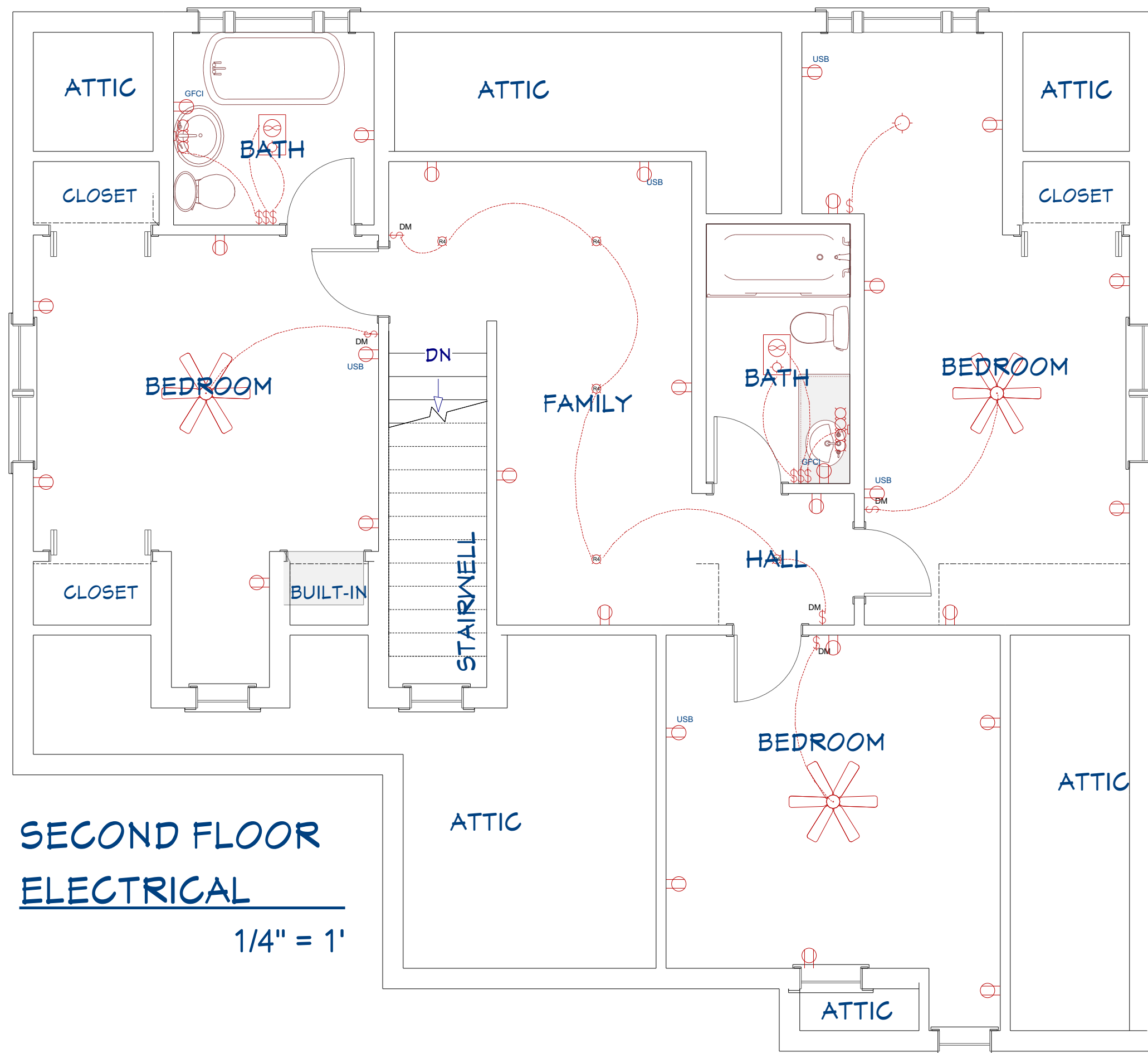
DATE:  
3/17/2016

SCALE:  
SEE VIEW

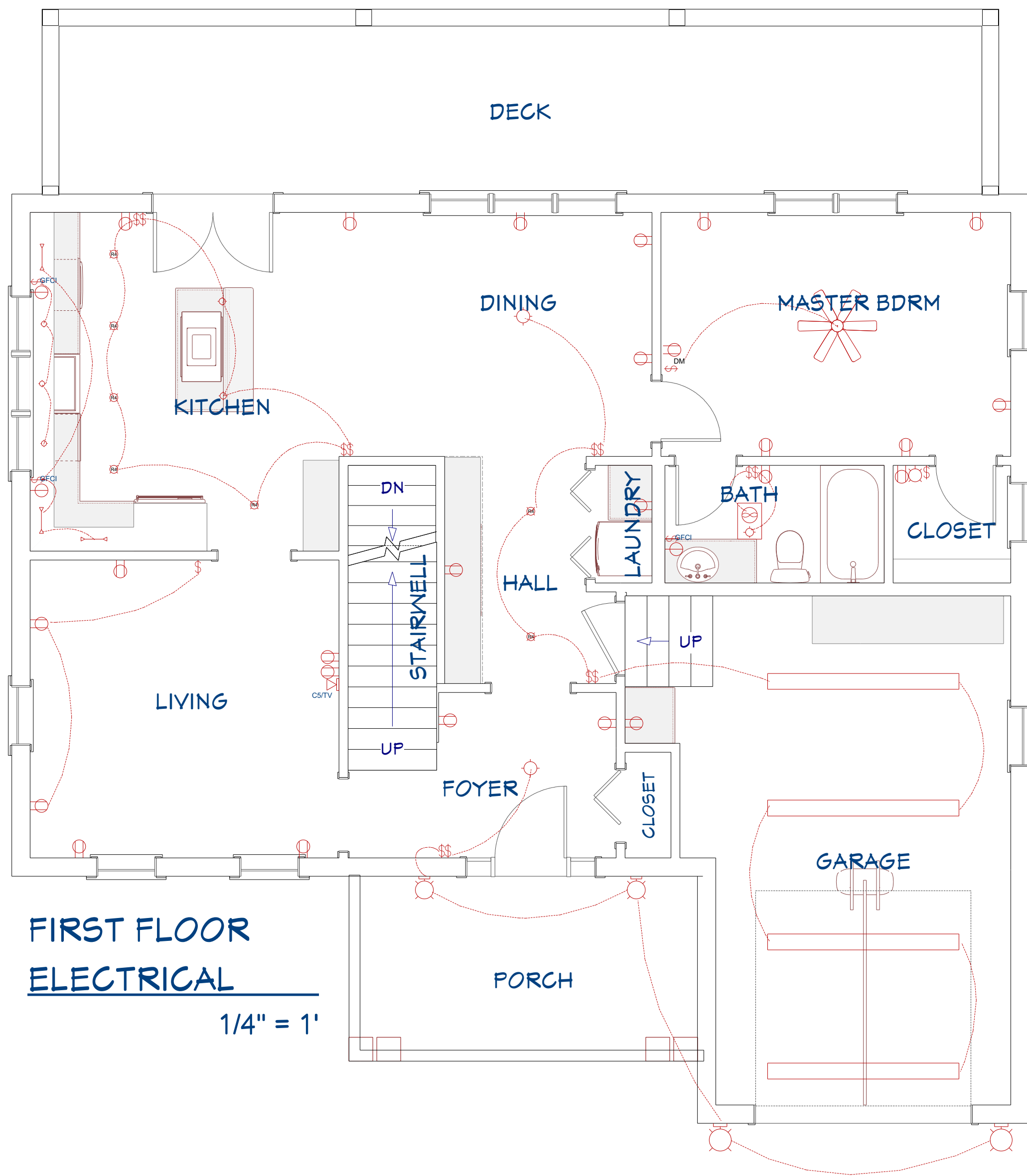
SHEET:

7



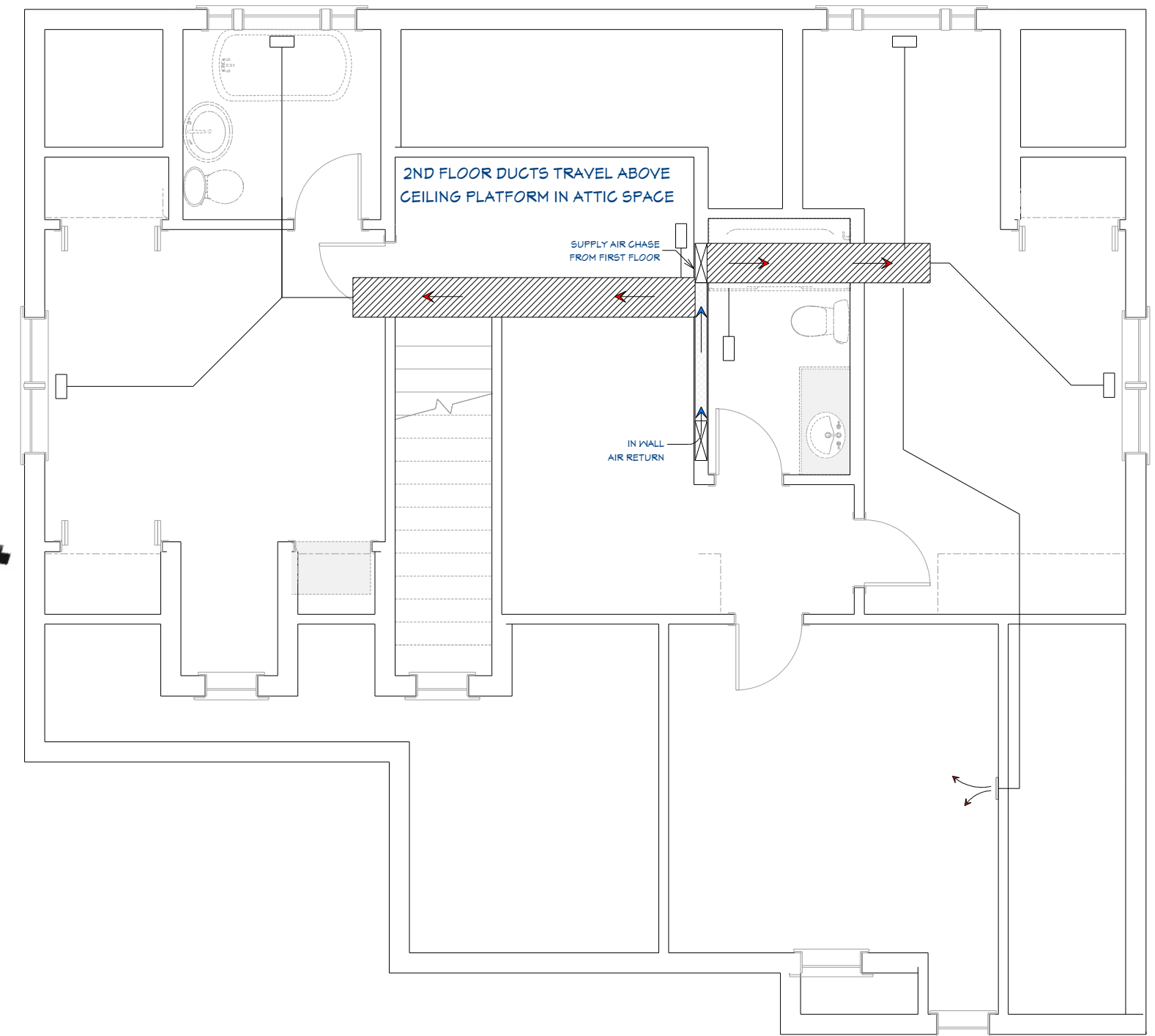
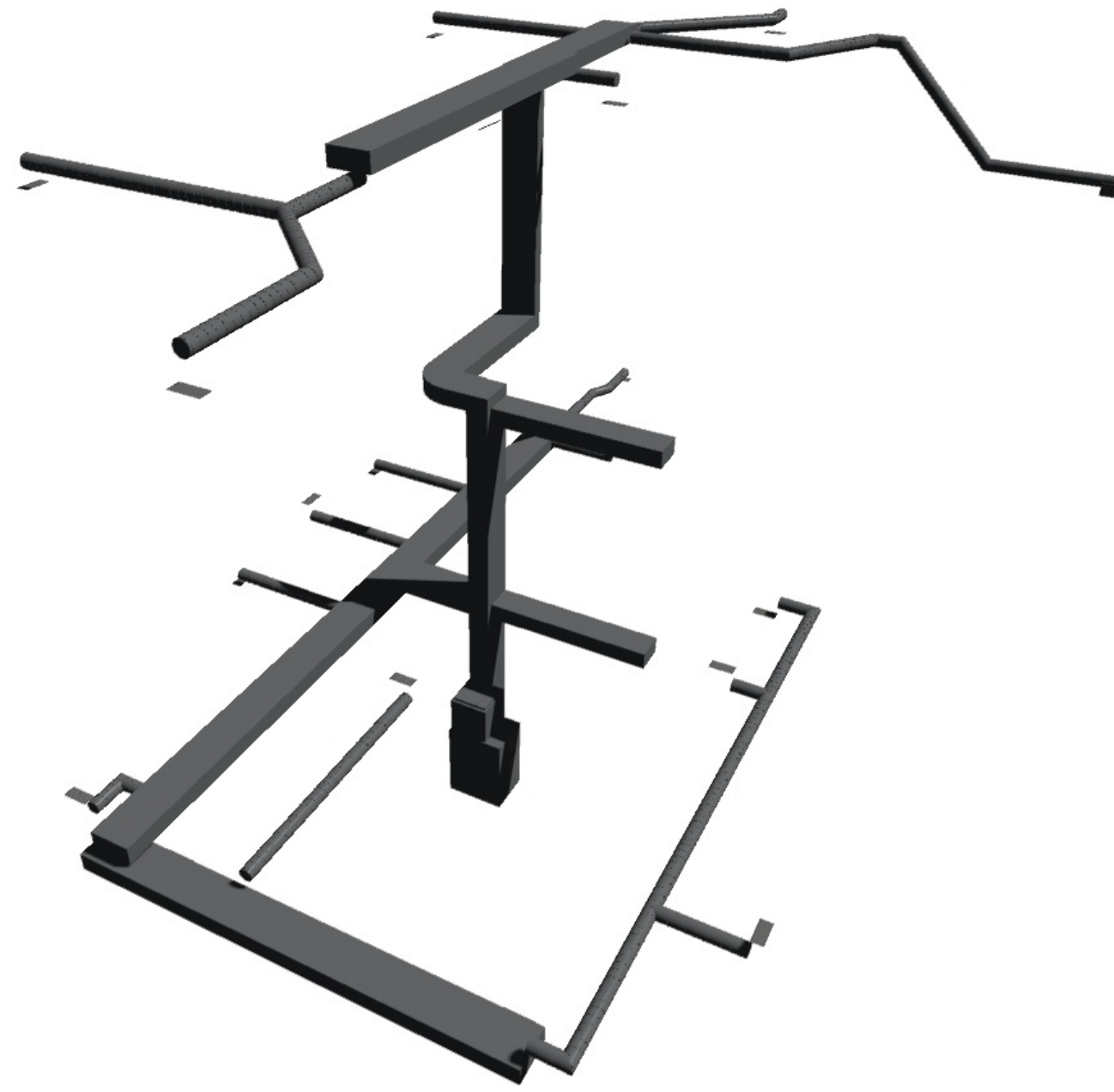


SECOND FLOOR  
ELECTRICAL  
1/4" = 1'

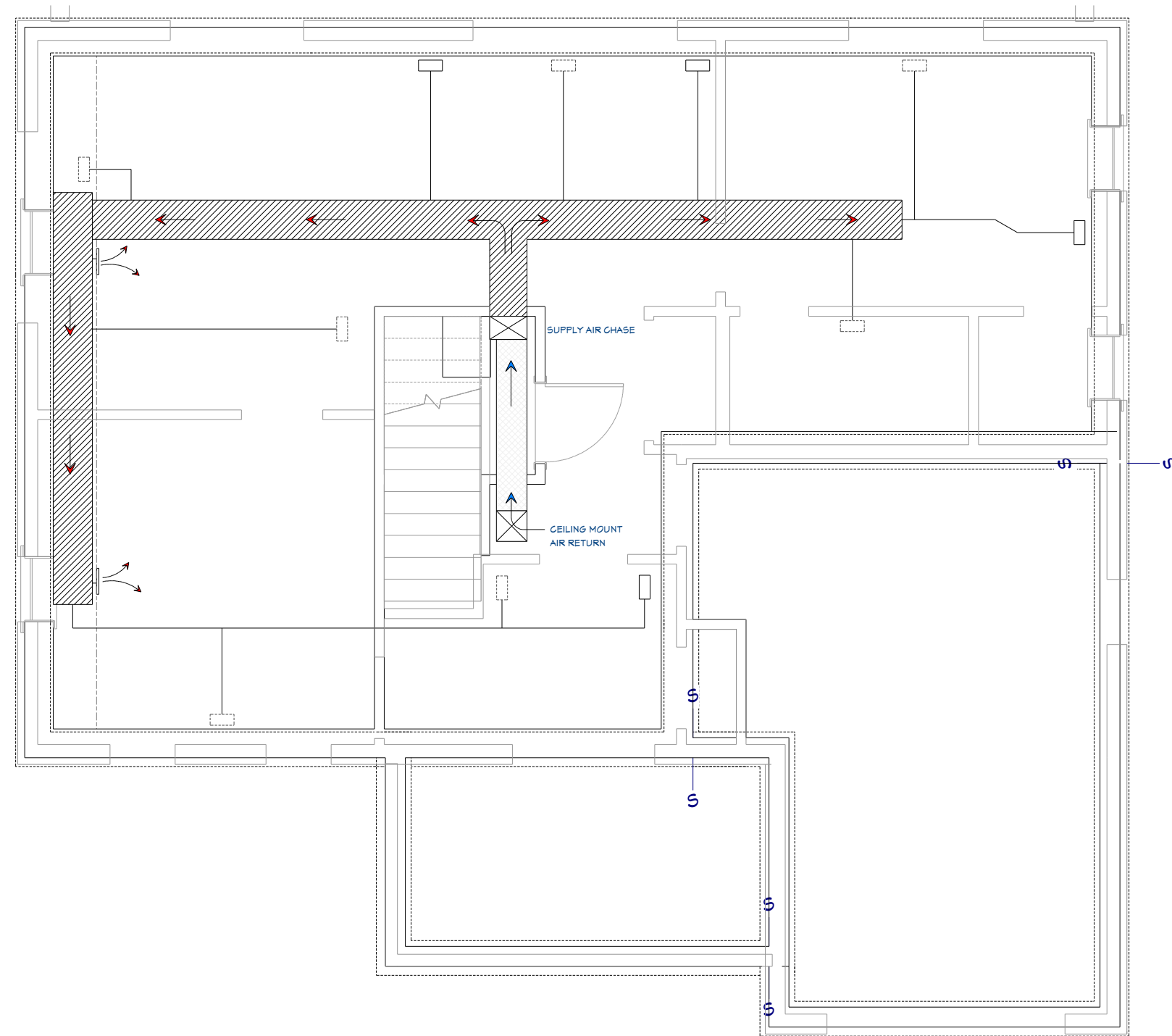


FIRST FLOOR  
ELECTRICAL  
1/4" = 1'

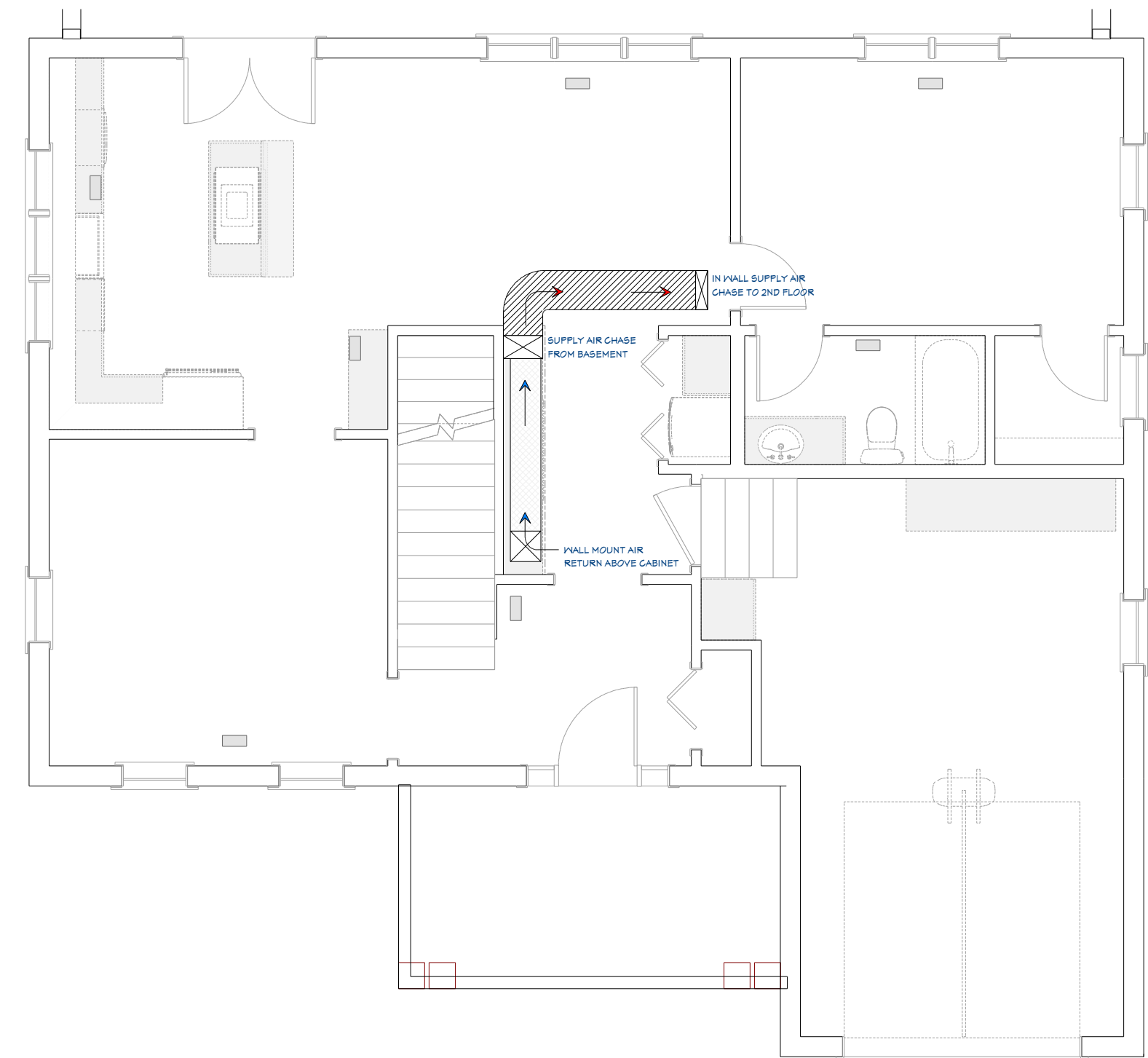
ELECTRICAL - DATA - AUDIO LEGEND	
SYMBOL	DESCRIPTION
	Ceiling Fan
	Ventilation Fans: Ceiling Mounted, Wall Mounted
	Ceiling Mounted Light Fixtures: Surface/Pendant, Recessed, Heat Lamp, Low Voltage
	Wall Mounted Light Fixtures: Flush Mounted, Wall Sconce
	Chandelier Light Fixture
	Fluorescent Light Fixture
	240V Receptacle
	110V Receptacles: Duplex, Weather Proof, GFCI
	Switches: Single Pole, Weather Proof, 3-Way, 4-Way
	Switches: Dimmer, Timer
	Audio Video: Control Panel, Switch
	Speakers: Ceiling Mounted, Wall Mounted
	Wall Jacks: CAT5, CAT5 + TV, TV/Cable
	Telephone Jack
	Intercom
	Thermostat
	Door Chime, Door Bell Button
	Smoke Detectors: Ceiling Mounted, Wall Mounted
	Electrical Breaker Panel



SECOND FLOOR HVAC  
3/16" = 1'



BASEMENT HVAC  
3/16" = 1'



FIRST FLOOR HVAC  
3/16" = 1'



REVISION TABLE	
NUMBER	DATE

ELECTRICAL AND  
HVAC PLANS

CHIC COTTAGE

DRAWINGS PROVIDED BY:  
Chief Architect Software  
www.chiefarchitect.com  
208.482.4433

DATE:

3/17/2016

SCALE:

SEE VIEW

SHEET:

8