

Hill Residence – Beachy Kitchen Remodel

Design Statement

Shawn and Jalen have an idyllic home on the beachfront; my concept to revamp their kitchen will help align their indoor space with their locale and lifestyle. I focused on form and function in these forward-thinking modifications to keep the couple entertaining guests and enjoying themselves for years to come.

Space Planning and Function: Kitchen

- The wall between the Dining Room and Kitchen has been removed and replaced with an architectural beam that matches the other exposed beams in the house in color and scale.
- Re-engineering the box beam that previously bisected the kitchen allows it to be raised into the ceiling, creating a flat plane in the kitchen.
- The laundry appliances have been removed from the kitchen space and relocated to the mudroom as a high-efficiency stacked unit.
- Removing the pantry closet and relocating the exterior door creates more counter workspace and opens up an outer patio wall perfect for barbecue and outdoor prep.
- With the older windows removed and the west-facing window replaced with an oversized awning unit that opens out, access to an exterior counter height bar top now connects the ocean breezes and scenery directly to the kitchen.
- European cabinets with pressure-actuated latches and slides, a clean lacquer white finish, and flush counter overhangs satisfy Jalen's need for an easy-to-clean space.
- Feeding stations at the base of pantry wall cabinets (next to the exterior door) create hide-away options and keeps Waffles' and Noodles' messes under control with the touch of a toe.
- A flush wall oven and smart oven increase Shawn's cooking capacity in the kitchen for both quick and time-intensive meal prep.
- An extension of base cabinets between the Kitchen and Dining room not only creates landing space for the range, oven, and refrigerator but creates a sitting and organizing space for planning and working. A drawer cabinet at the wall is a great place for essential supplies, tucking away notes, tablets, and other necessities, and keeping things tidy when not in use.

Lighting and Aesthetics: Kitchen

- Solid surface counters and backsplashes (also echoed on the veneer of the Vent Hood) add warmth and movement via natural material.
- Integrated cabinet doors and drawers with lacquer finish prevent visual distractions and focus massings that allow your eyes to consume the view, engage with others, and transition between spaces.

- The sink wall is coated with a high-gloss finish that makes it water-resistant, easy to wipe clean, and is a bright surface that bounces more lighting around the room, helping enhance its soft glow.
- Continuing the hardwood oak flooring into the kitchen warms up the space and prevents it from feeling too sterile.
- Faucet fittings and pendant lights are spec'd in a brushed bronze material that catches Oregon's sunset and warms up the room while complementing the gold veins in the natural stone.
- 2 pendant lights serve the peninsula, while 2 more host the kitchen sink and outside bar counter, welcoming cooks and guests alike.
- Dimmable modern rectangular LED Flush lights are placed throughout the kitchen to satisfy task and ambient lighting needs.
- Under-cabinet tape lighting brightens the shadowy spaces under wall cabinets.
- The exterior door is tall, with tempered glass, and replaces much of the glazing lost to the upgrades; the awning window and open access to the dining room's natural lighting more than compensates with the new total 45.92 sq. ft. of glazing area.
- Shawn and Jalen can accentuate their new space with lots of fresh fronds and greenery to add pops of color to this neutral palette.

1/2" : 1'

- [illegible]

CONSTRUCTION LEGEND

EXISTING WALL TO REMAIN



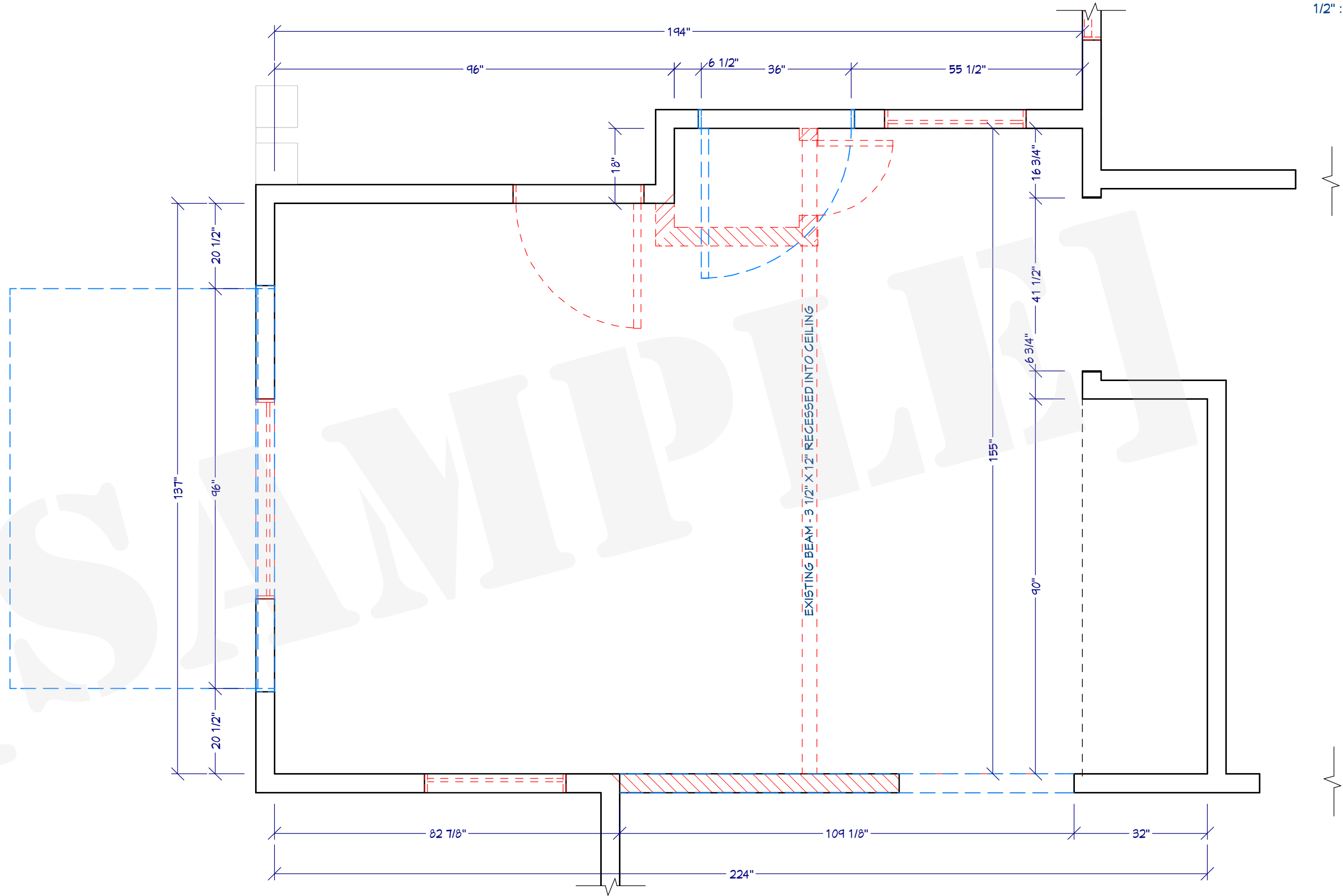
EXISTING WALL TO REMOVE



EXISTING ELEMENT TO REMOVE



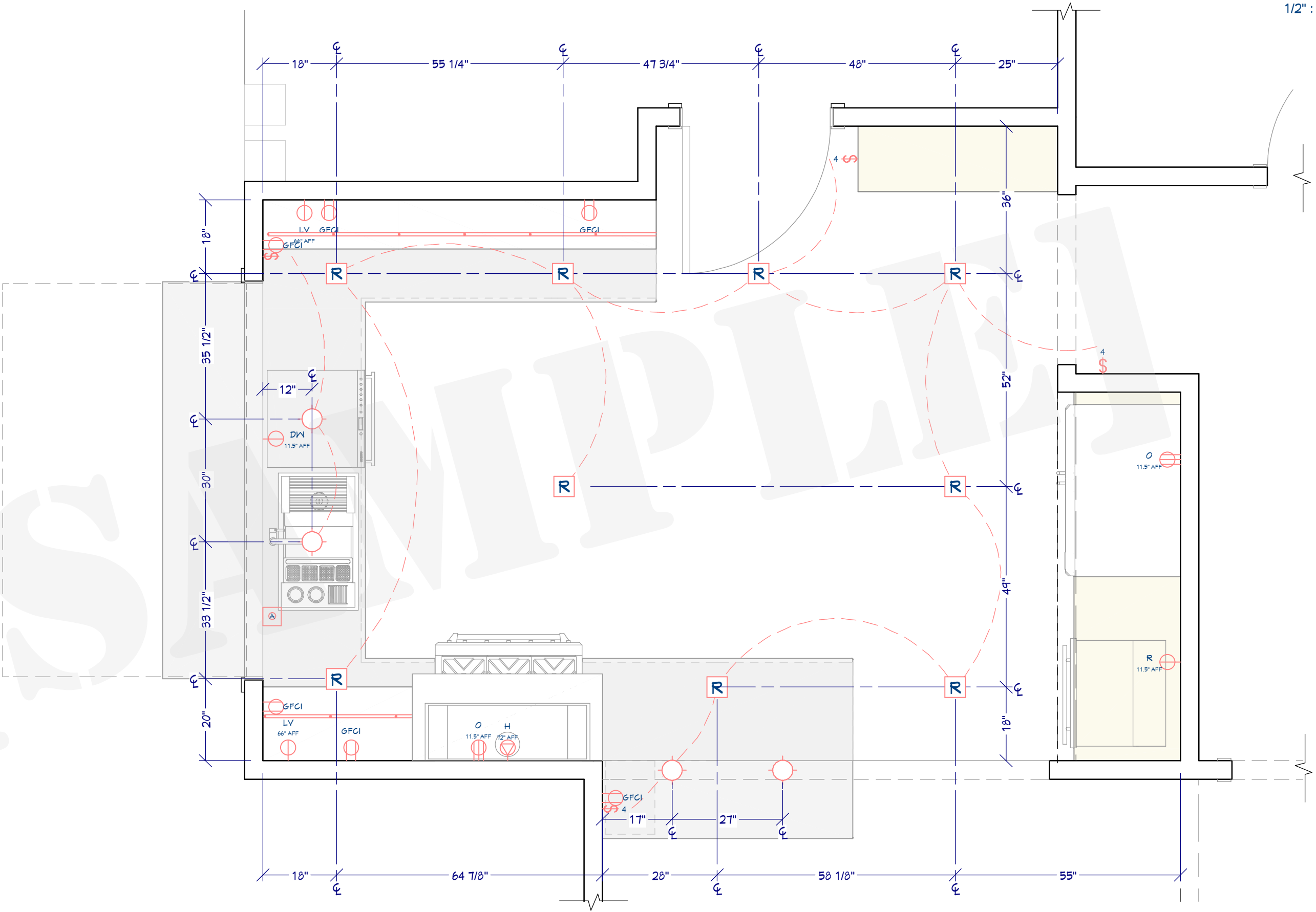
NEW OPENING TO ADD



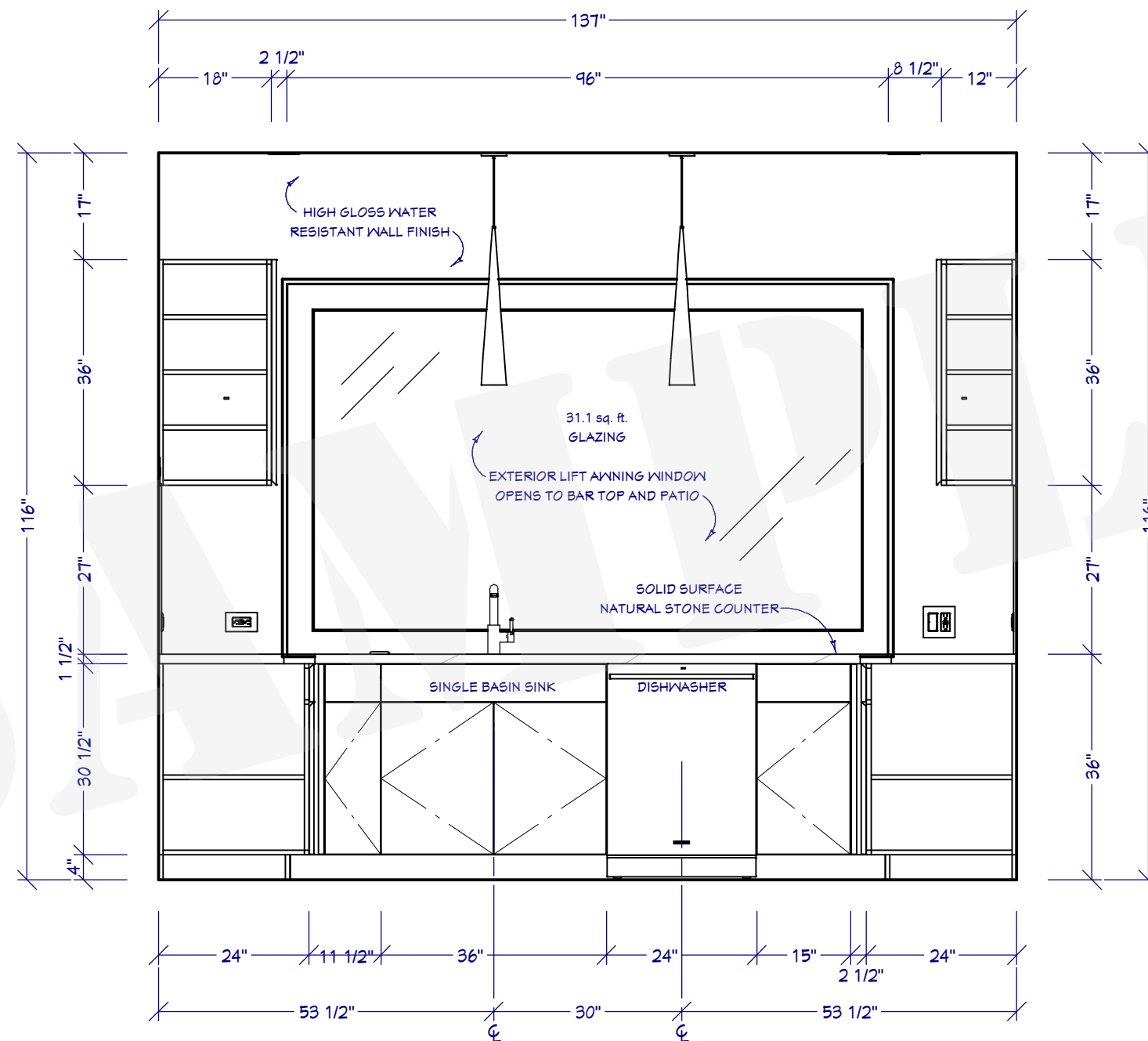
DIGITAL DRAWING PROVIDED BY:

MECHANICAL LEGEND

-  4" 5000K SLIM SQUARE
RECESSED LED DOWNLIGHT
CANLESS IC RATED
MAXXIMA MRL-S41020NWS
-  LED TAPE LIGHT 120 LEDS/M
SOFT BRIGHT WHITE (3000K)
RIBBONFLEX PRO 143250
-  OPTIC PENDANT
7.5 WATT LED 120V
2700K; 90+ CRI
BOYD LIGHTING #10498
-  SWITCH 15A
DECORA SMART WI-FI
LEVITON D215S-1BW
-  4-WAY SWITCH 15A
DECORA SMART WI-FI
LEVITON D215S-1BW
-  GARBAGE DISPOSAL AIR SWITCH
120V/12 AMPS (1 HP) MAX
MOEN ARC-4200-CH/SN
-  GFCI 24W OUTLET
15A 125V
LEVITON R92-GFWT1-0KW
-  GFCI COMBINATION 24W OUTLET
15A 125V
TYPE A USB CHARGER
LEVITON GUSB1-W
-  GFCI 24W OUTLET
15A 125V
LEVITON R92-GFWT1-0KW
-  50 AMP 125V NEMA 14 OUTLET
LEVITON R10-00279-500



DIGITAL DRAWING PROVIDED BY:



DIGITAL DRAWING PROVIDED BY:

Chief Architect
SOFTWARE
www.chiefarchitect.com 208.292.3400

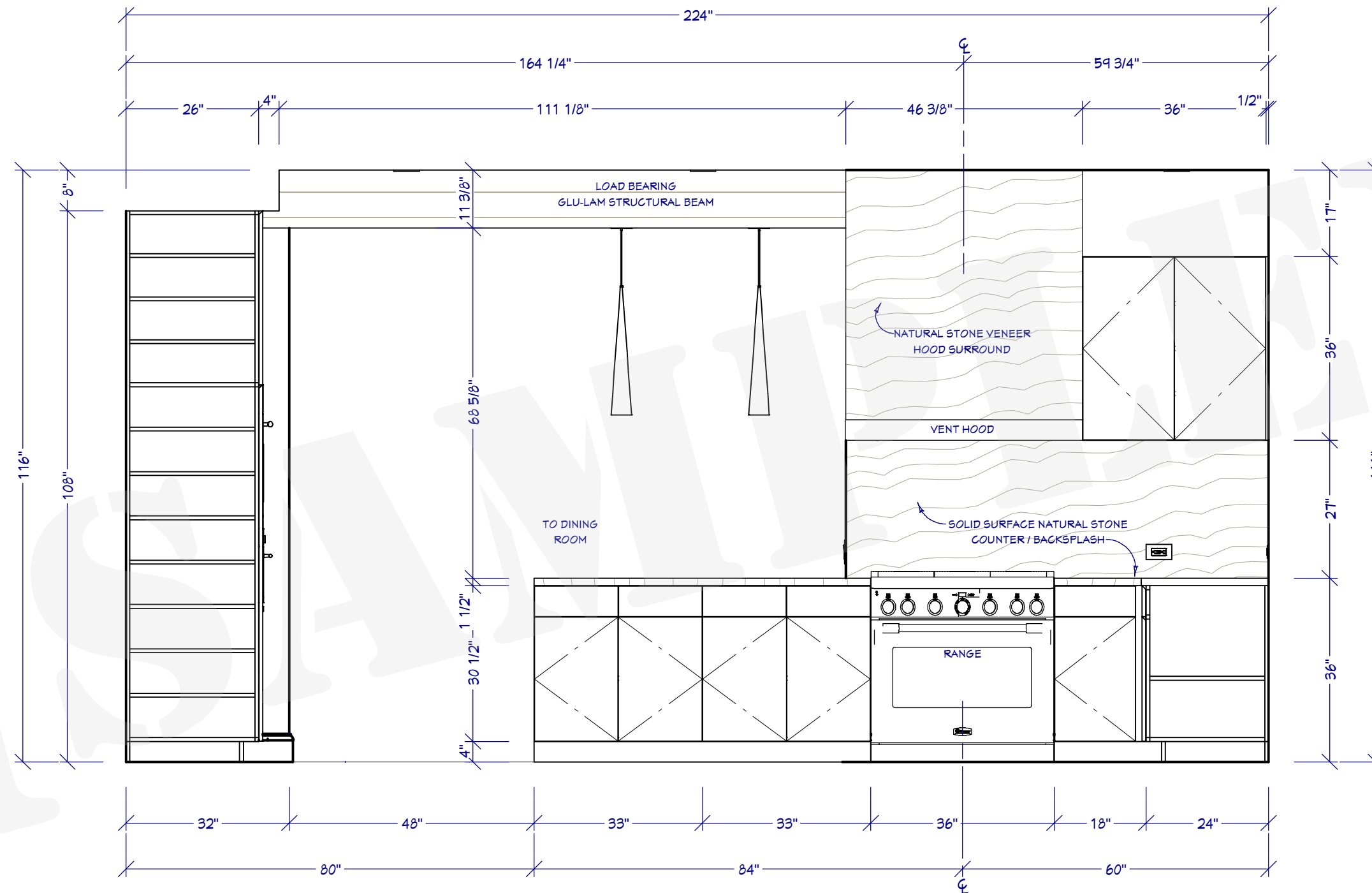
NKBA

NATIONAL
KITCHEN+BATH
ASSOCIATION

STUDENT DESIGN COMPETITION

SUBMISSION #
K-2082923400

K4



DIGITAL DRAWING PROVIDED BY:

Chief Architect
SOFTWARE
www.chiefarchitect.com 208.292.3400

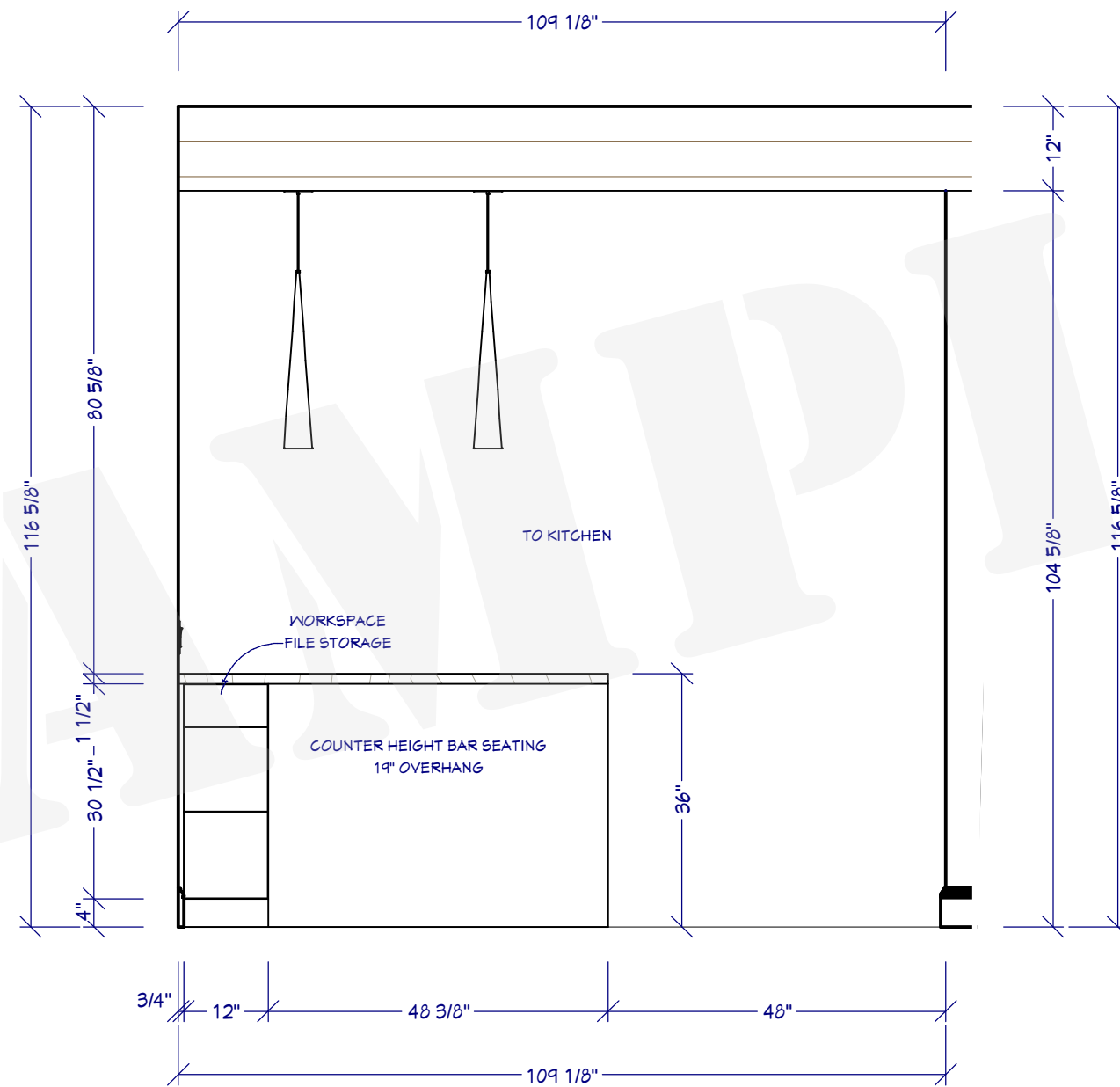
NKBA

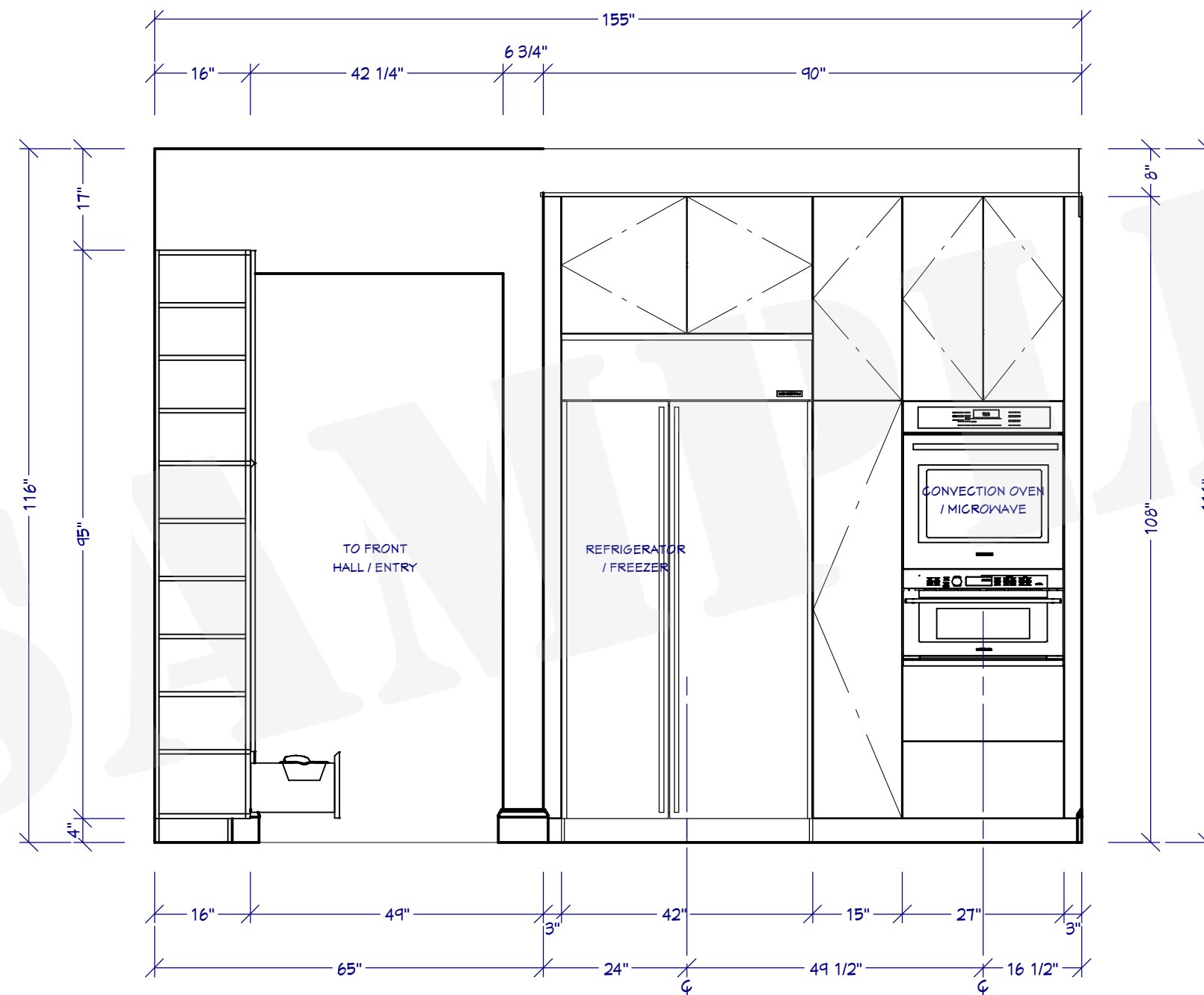
NATIONAL
KITCHEN+BATH
ASSOCIATION

STUDENT DESIGN COMPETITION

SUBMISSION #
K-2082923400

K5





DIGITAL DRAWING PROVIDED BY:

Chief Architect
SOFTWARE
www.chiefarchitect.com 208.292.3400

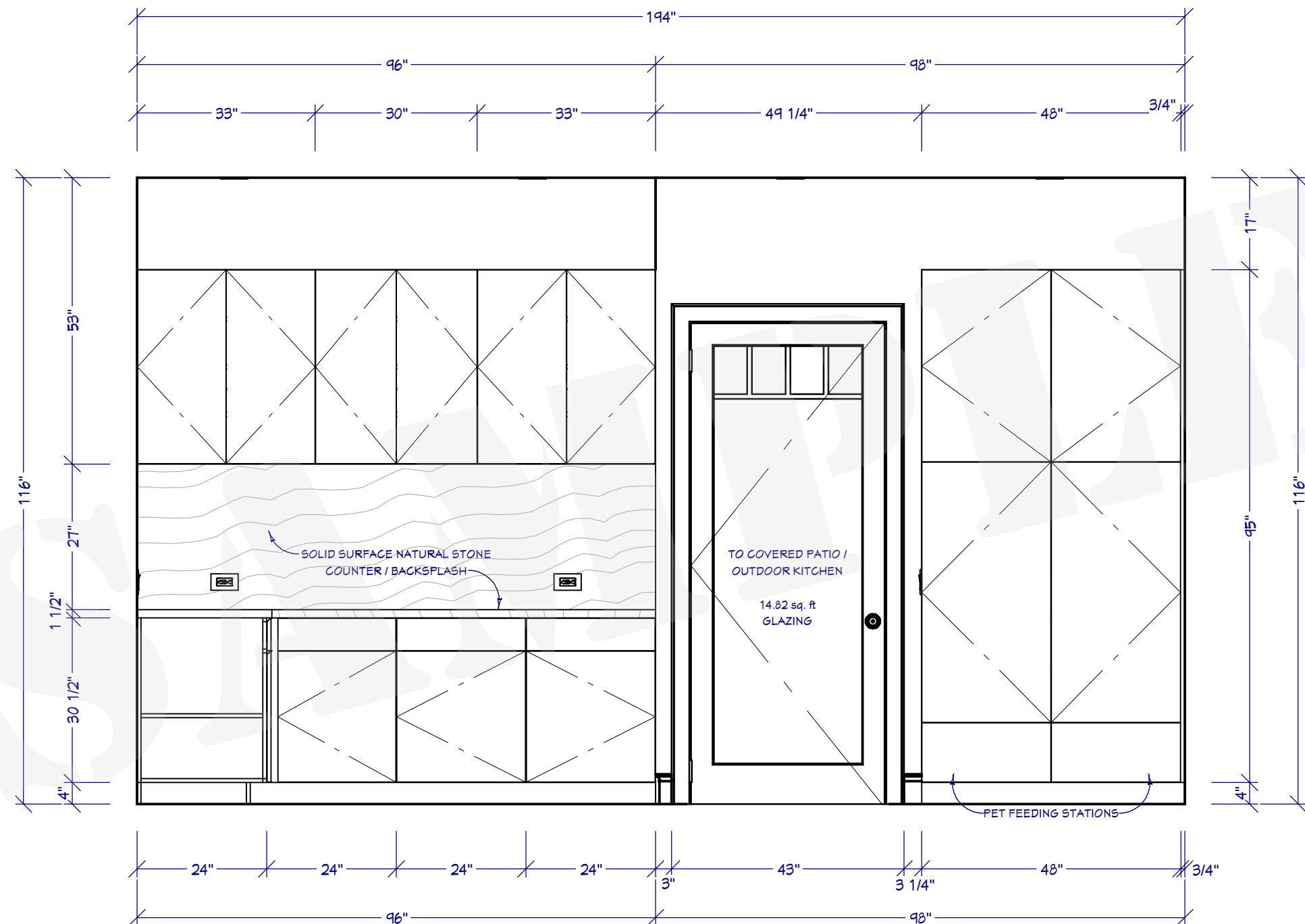
NKBA

NATIONAL
KITCHEN+BATH
ASSOCIATION

STUDENT DESIGN COMPETITION

SUBMISSION #
K-2082923400

K7





P1 KITCHEN PERSPECTIVE
NO SCALE



P2 KITCHEN PERSPECTIVE
NO SCALE

Hill Residence – Beachy Bathroom Remodel

Design Statement

Shawn and Jalen have an idyllic home on the beachfront; my concept to revamp their upstairs bathroom will help align their indoor space with their locale and lifestyle. I focused on form and function in these forward-thinking modifications to keep the couple entertaining guests and enjoying themselves for years to come.

Space Planning and Function: Bathroom

- The original bathroom layout was vast; to optimize the available space approx. 25 square feet was relinquished to the adjacent room. New closet access makes the room better suited to crafts/storage and even an overflow sleeping area when guests visit for large gatherings.
- Removing the linen closets in favor of counter and vanity space creates room for freshening up and getting ready for the day.
- A dividing wall and pocket door keep the toilet, bathing, and another vanity separate for privacy's sake. Sharing bathroom and grooming space just got more comfortable, not more cramped.
- Replacing the forced air register with electric radiant heating is a modern solution that is clean and luxurious underfoot. It serves both the vanity and bathing spaces and is comfortable for all.
- Confiscating a low-ceiling space from the guest bedroom closet allows for a built-in niche for plenty of storage.
- Floating vanities elevate each room; semi-flush sinks anchor them. Moisture and messes are easy to clean underneath, and toe-room is ample.
- A large jetted tub with shower fittings is the perfect place to rinse off or soak after a day in the salty coastal air.
- A built-in wall niche with an integrated handhold creates a grab point to lift/lower into the bath safely.
- A tempered glass divider blocks overspray from the shower to the floor.

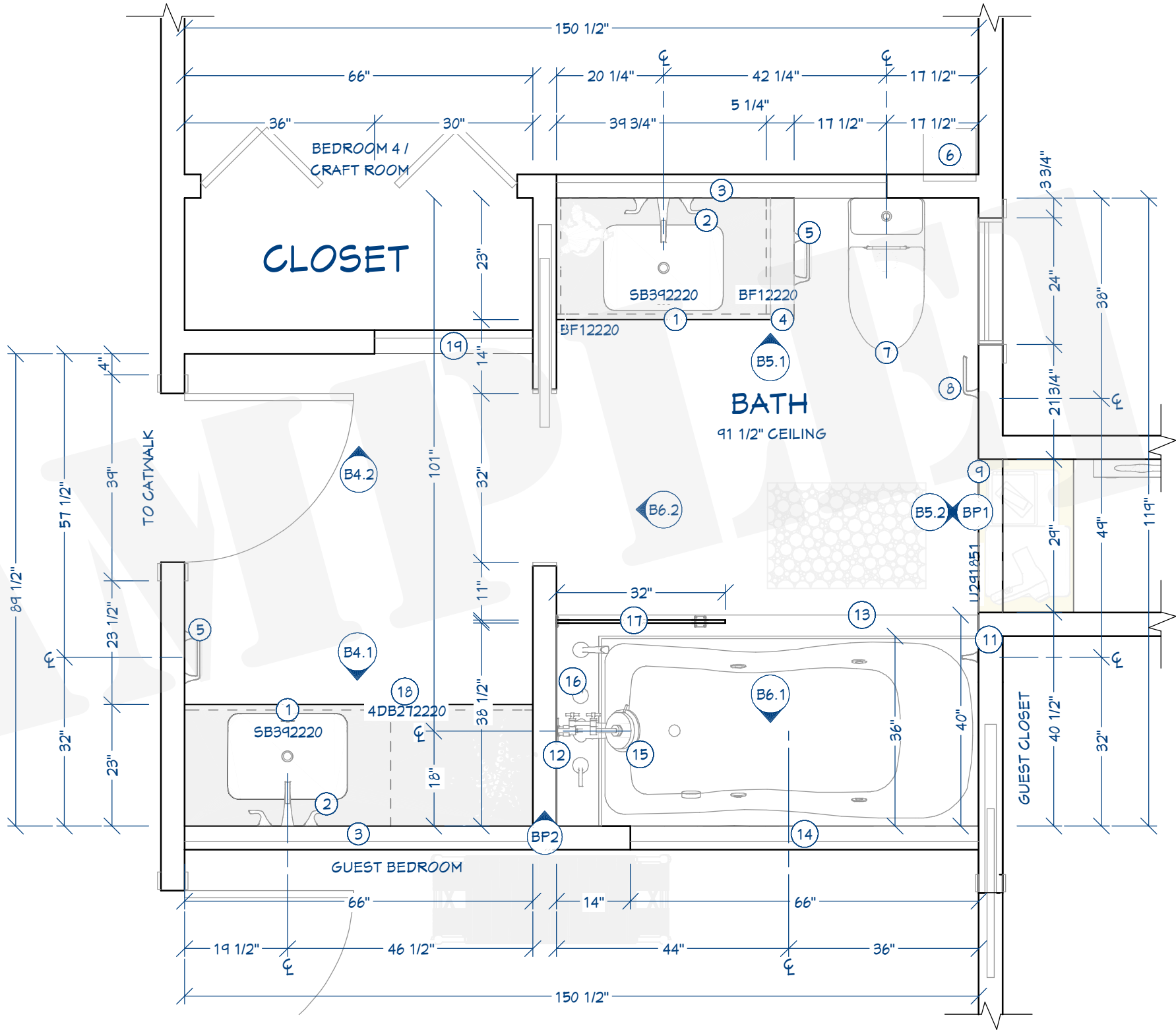
Lighting and Aesthetics: Bathroom

- In a neutral palette of grey, the floors are upgraded to extra-large format solid stone flooring. It has been oriented with its linear pattern directed toward task stations and continues up the bath wall.
- The remaining shower walls are also a solid surface in white and eliminate grout lines, making cleanup squeegee quick.
- A repeating, linear concept through each room is created with horizontal recessed niche mirrors behind sinks and a vertical, full-height mirror in the vanity room.
- Mirror niches include LED tape for plenty of ambient lighting.
- LED Flush mount lighting completes the needs in each space.

- The existing widow remains untouched and operational, providing a source for ventilation, outside air, and a point of natural light in the room.
- Fittings and hardware are matte black adding bold contrasts to the space.
- Caramelized bamboo counters and shelves incorporate echos of the warm wood tones seen throughout the house and offer a water-resistant surface that will stay beautiful for the foreseeable future.
- Once again, ledges, nooks, and open wall space offer Shawn and Jalen opportunities to include pops of color and greenery of their choosing.

FLOOR PLAN SPECIFICATION

- ① FLOATING VANITY CABINET
VESSEL BATHROOM SINK
KOHLER VOX K-5375
- ② WALL MOUNT LAVATORY
BRIZO SOTRIA T65851
- ③ RECESSED NICHE MIRROR
W/ ROPE LIGHTING
- ④ UNDER COUNTER PARTITION WALL
SURFACE MATCHED TO VANITY CABINET
- ⑤ 8" MINI TOWEL BAR
BRIZO SOTRIA 644750
- ⑥ EXISTING VENT STACK
- ⑦ KOHLER REACH TOILET K-3983-S
- ⑧ TISSUE HOLDER
BRIZO SOTRIA 645050
- ⑨ CUSTOM BUILT-IN LINEN STORAGE
NICHE TOP; ADJUSTABLE BAMBOO SHELF BOTTOM
- ⑩ TANKLESS ELECTRIC WATER HEATER
150AMP; 240V; 4 HEATING CHAMBERS
RHEEM RETEX-36
- ⑪ VERTICAL 8" TOWEL/GRAB BAR
BRIZO SOTRIA 654058
- ⑫ 3-FUNCTION DIVERTER
BRIZO SOTRIA T60850
- ⑬ WHIRLPOOL BATH IN TUB SURROUND
KOHLER MARIPOSA K-1257
- ⑭ SHOWER WALL NICHE
- ⑮ SHOWER HEAD
BRIZO THERM T60235
- ⑯ ROMAN TUB W/ HANDSHOWER
BRIZO SOTRIA T67450
- ⑰ 1/2" THICK GLASS
SHOWER PARTITION
- ⑱ FLOATING VANITY DRAWER CABINET
FULL EXTENSION SLIDES
- ⑲ RECESSED NICHE FULL HEIGHT MIRROR
W/ ROPE LIGHTING



DIGITAL DRAWING PROVIDED BY:

CONSTRUCTION LEGEND

EXISTING WALL TO REMAIN



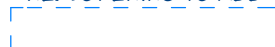
EXISTING WALL TO REMOVE



EXISTING ELEMENT TO REMOVE



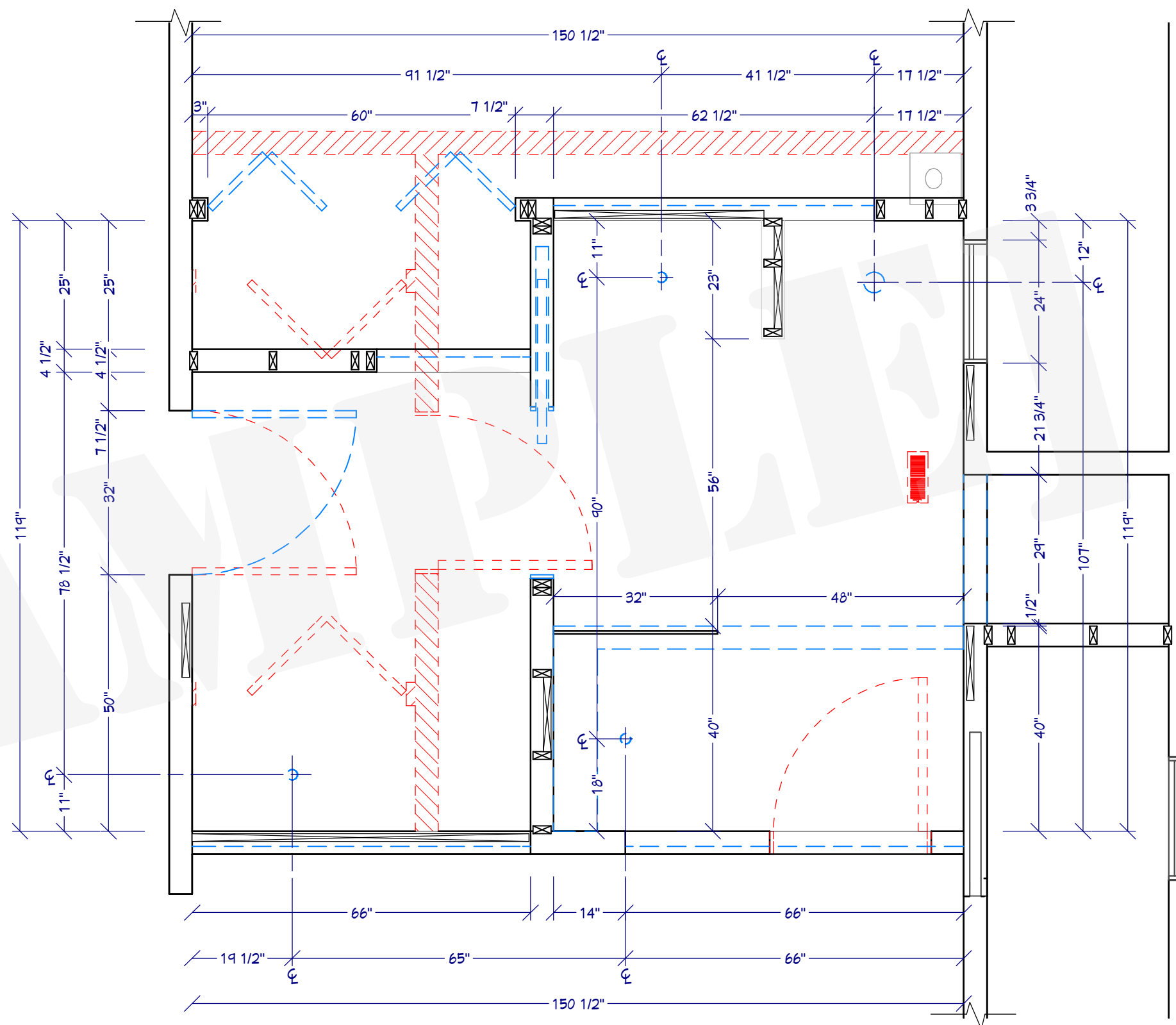
NEW OPENING TO ADD













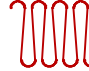
NEW WALL TO ADD

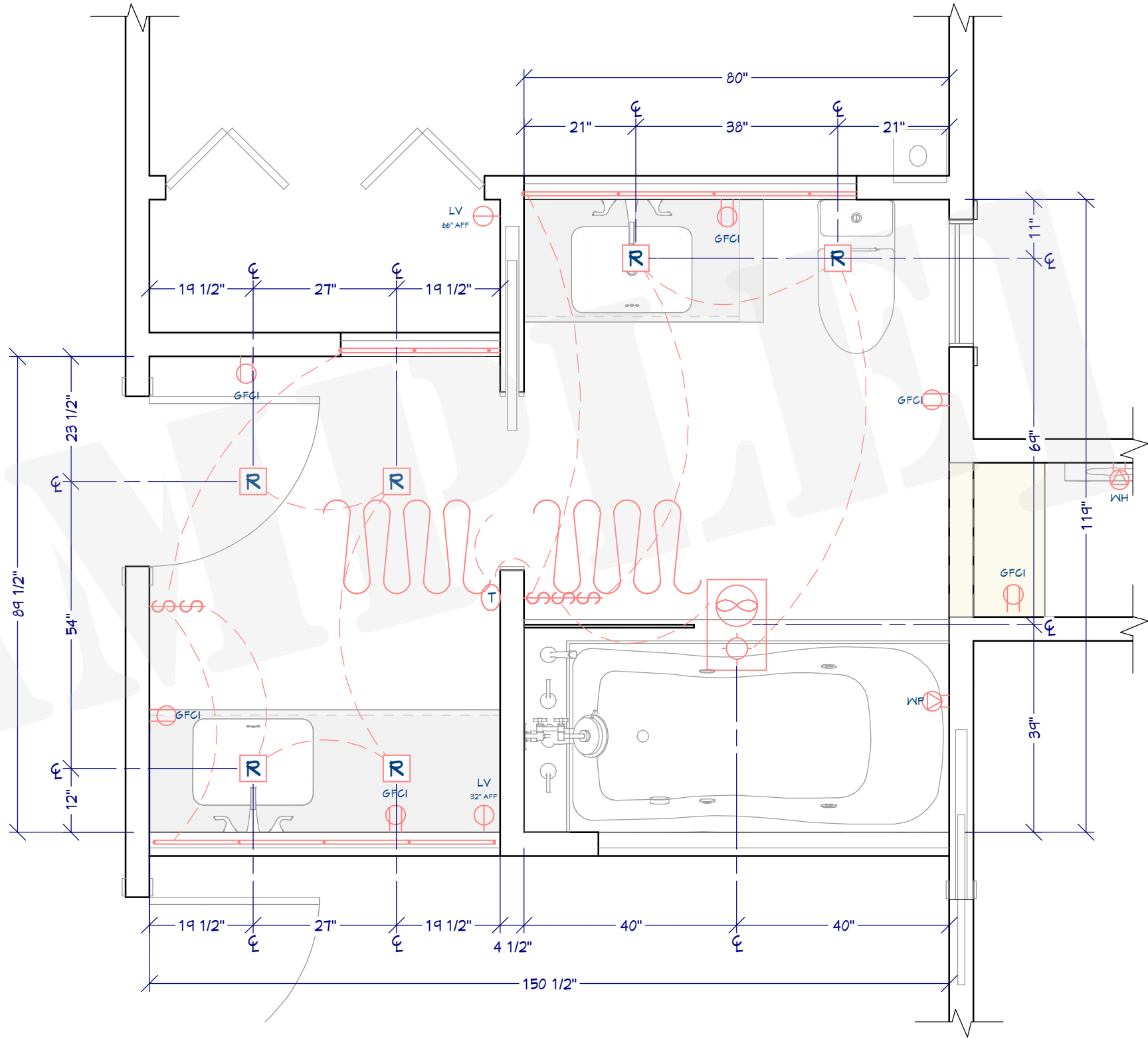


NEW BLOCKING TO ADD

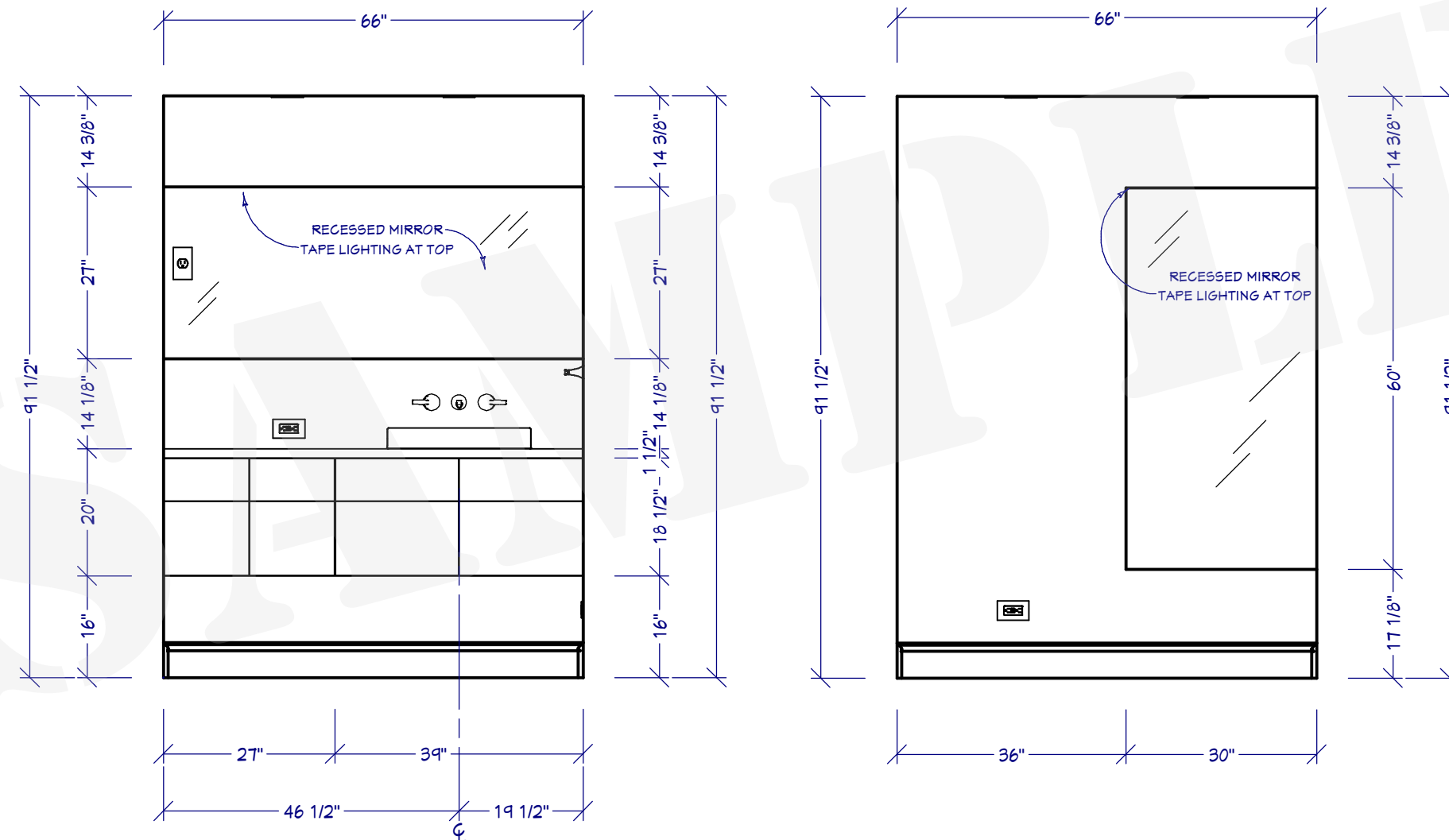


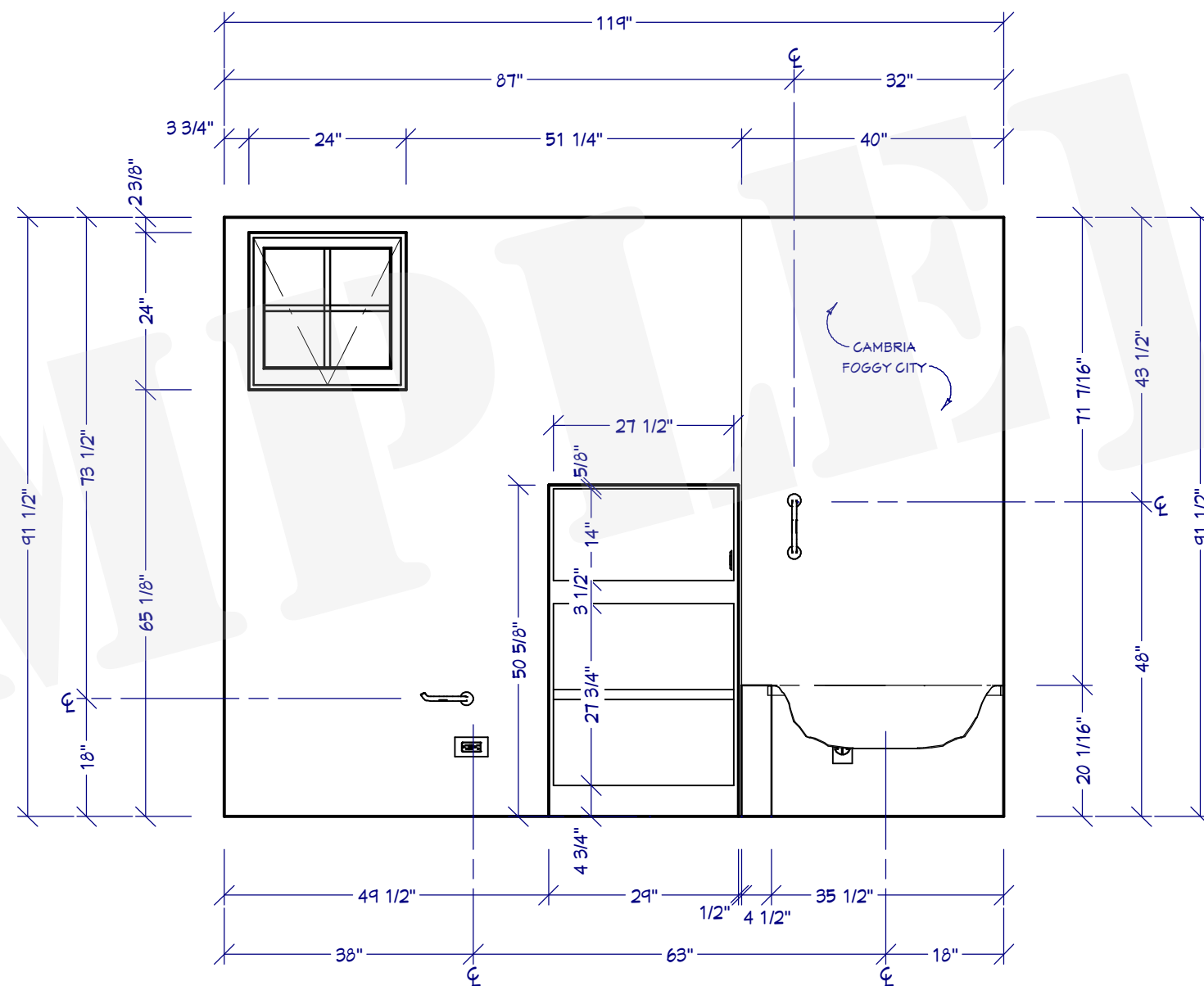
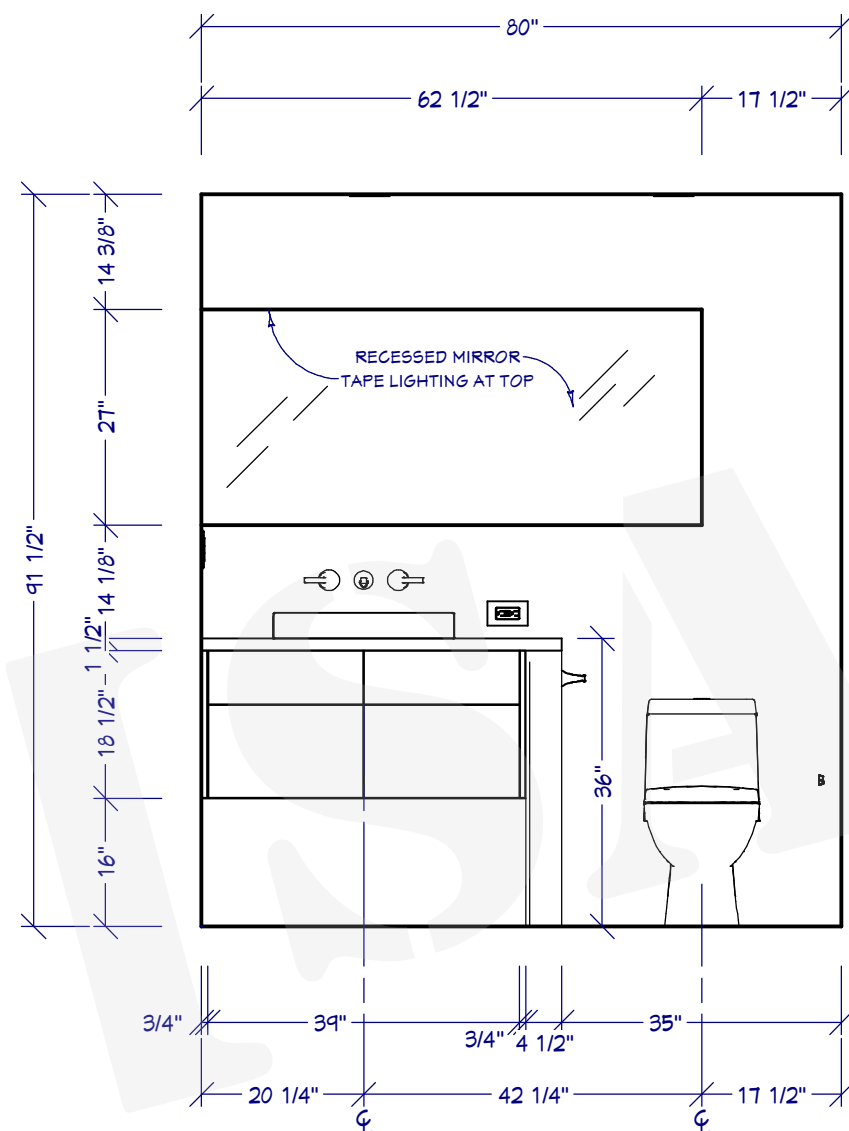
MECHANICAL LEGEND

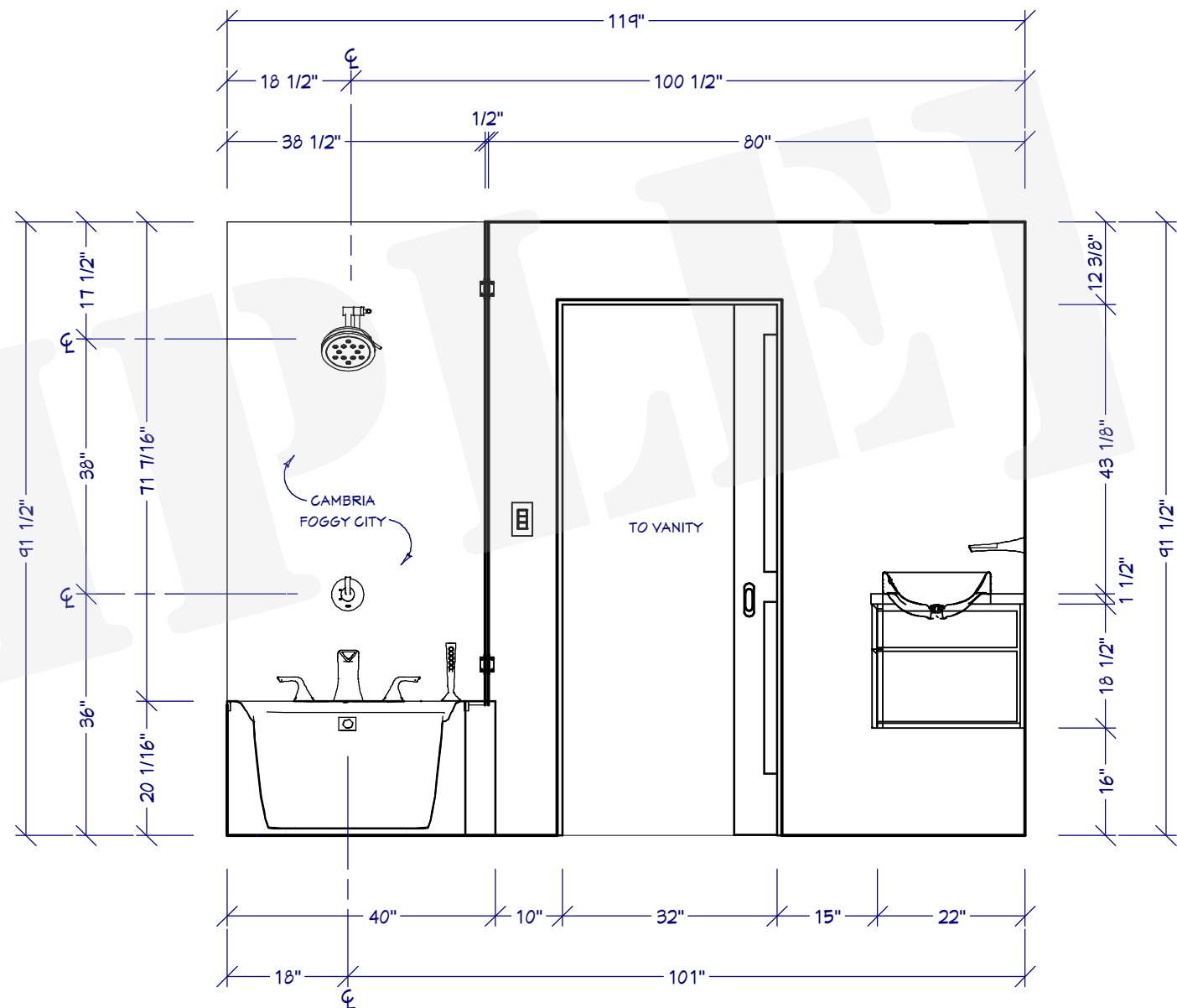
-  4" 5000K SLIM SQUARE
RECESSED LED DOWNLIGHT
CANLESS IC RATED
MAXXIMA MRL-S41020NWS
-  LED TAPE LIGHT 120 LEDS/M
SOFT BRIGHT WHITE (3000K)
RIBBONFLEX PRO 143250
-  LOW PROFILE LED QUIET VENT FAN
110CFM, 0.9 SONES
AERO PURE ABF110 L5 W
-  RADIANT FLOOR THERMOSTAT
GFCI 15AMPS 120/240 VAC
SUNSTAT 500050-SC
-  DUAL SWITCH 15AMP
LEVITON DECORA R62-05634-0WS
-  3-ROCKER SWITCH 15AMP
LEVITON DECORA R62-01755-0WS
-  GFCI 24W OUTLET
15A 125V
LEVITON R92-GFMT1-0KW
-  GFCI COMBINATION 24W OUTLET
15A 125V
TYPE A USB CHARGER
LEVITON GUSB1-W
-  50 AMP 125/250V NEMA 14 OUTLET
LEVITON R10-00279-S00
-  50 AMP 125/250V NEMA 14 OUTLET
LEVITON R10-00279-S00
-  RADIANT FLOOR MAT 120V
SUNTOUCH 81004745
INSTALLED IN OPEN FLOOR AREAS



DIGITAL DRAWING PROVIDED BY:





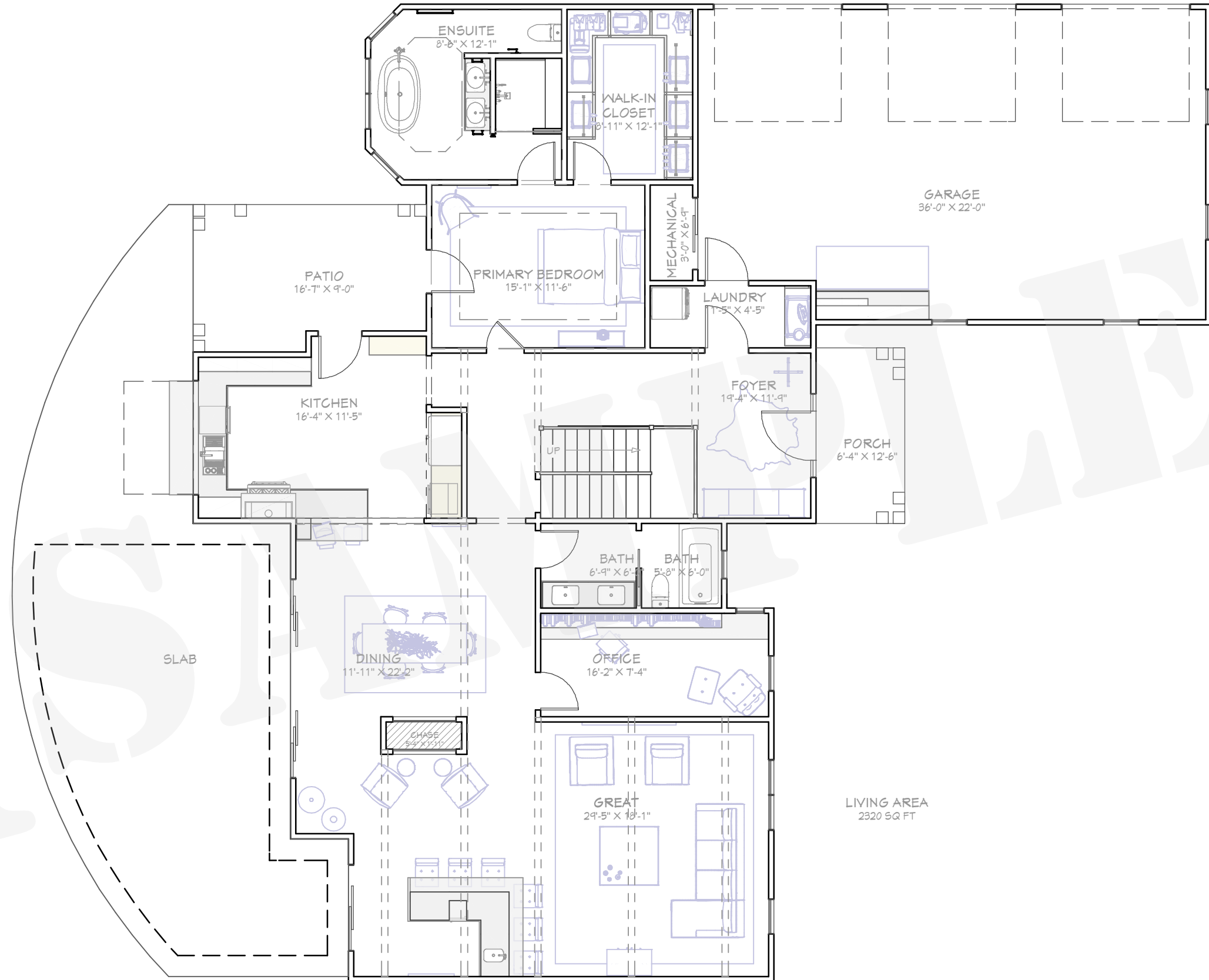




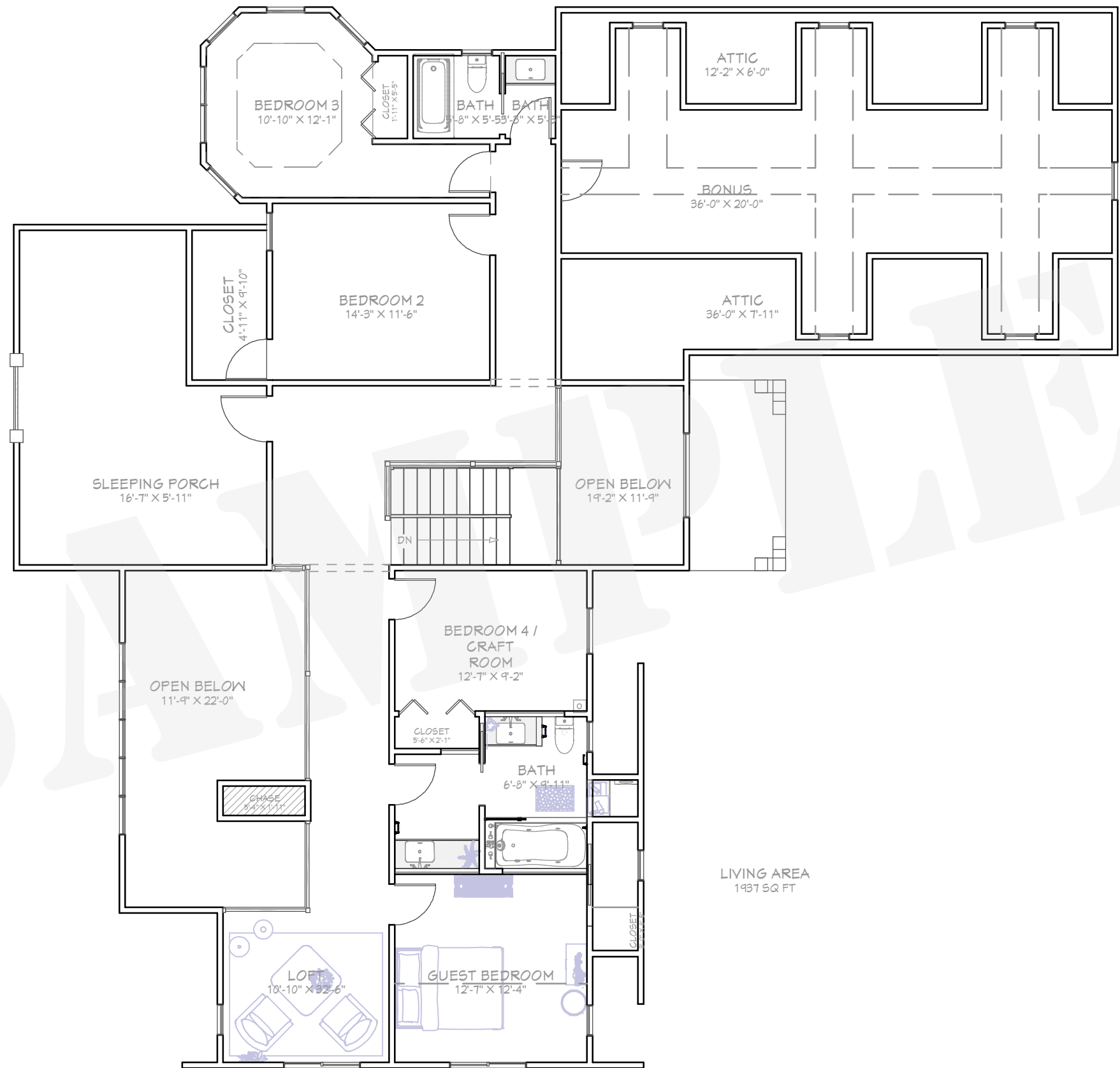
BP1 BATHROOM PERSPECTIVE
NO SCALE



BP2 BATHROOM PERSPECTIVE
NO SCALE



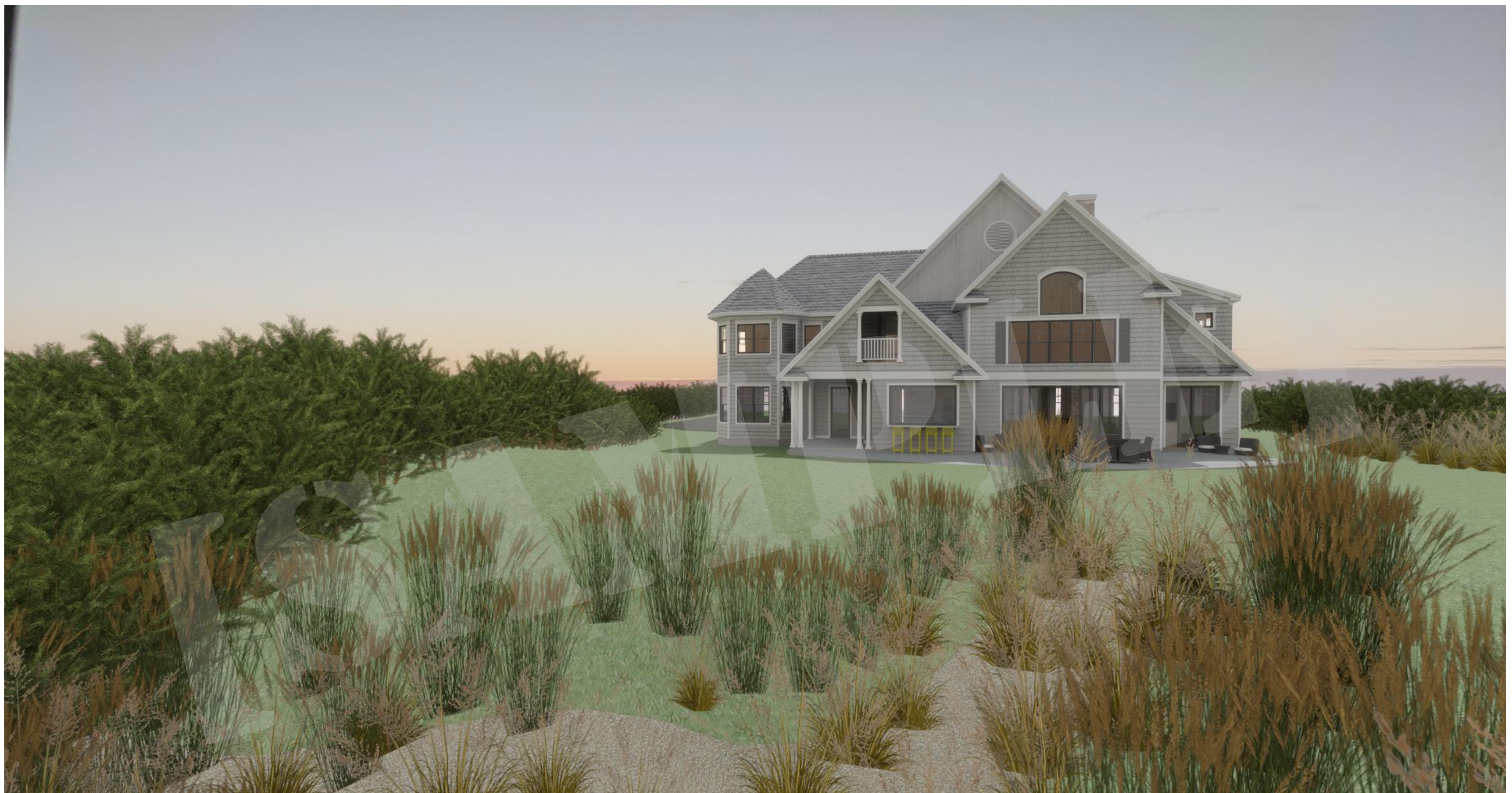
DIGITAL DRAWING PROVIDED BY:



DIGITAL DRAWING PROVIDED BY:



FRONT PERSPECTIVE VIEW
NO SCALE



REAR PERSPECTIVE VIEW

NO SCALE