



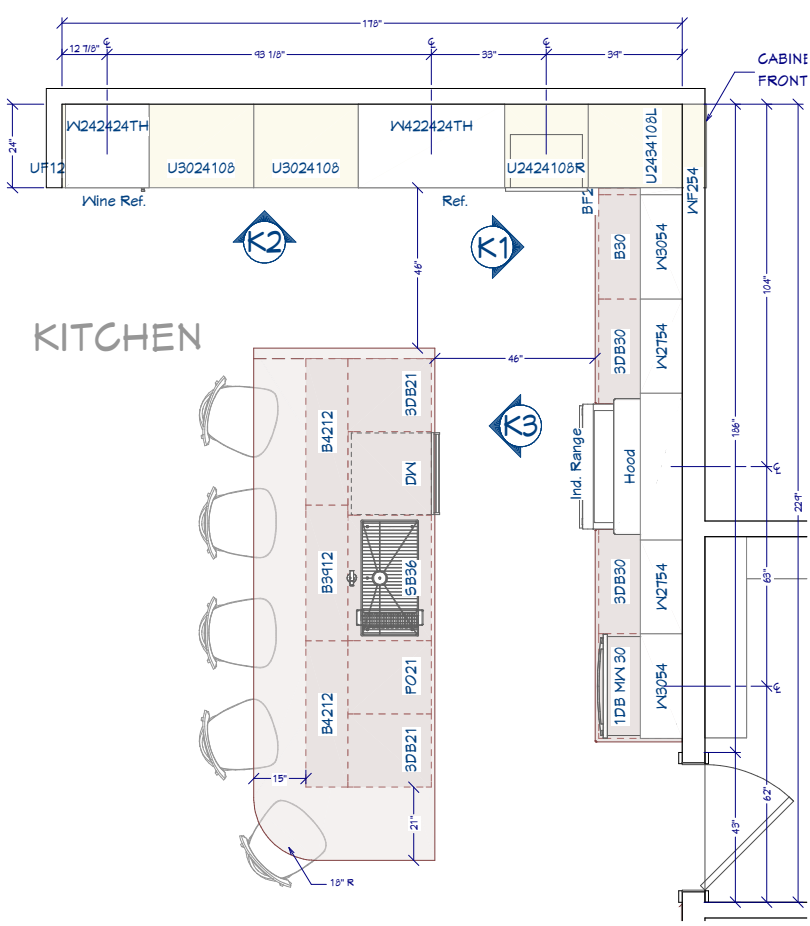
KITCHEN RENDERING - OPTION 1

FOR ILLUSTRATION ONLY NO SCALE



KITCHEN RENDERING - OPTION 2

FOR ILLUSTRATION ONLY NO SCALE



KITCHEN FLOOR PLAN

1/2"=1'

KITCHEN & CABINET NOTES:

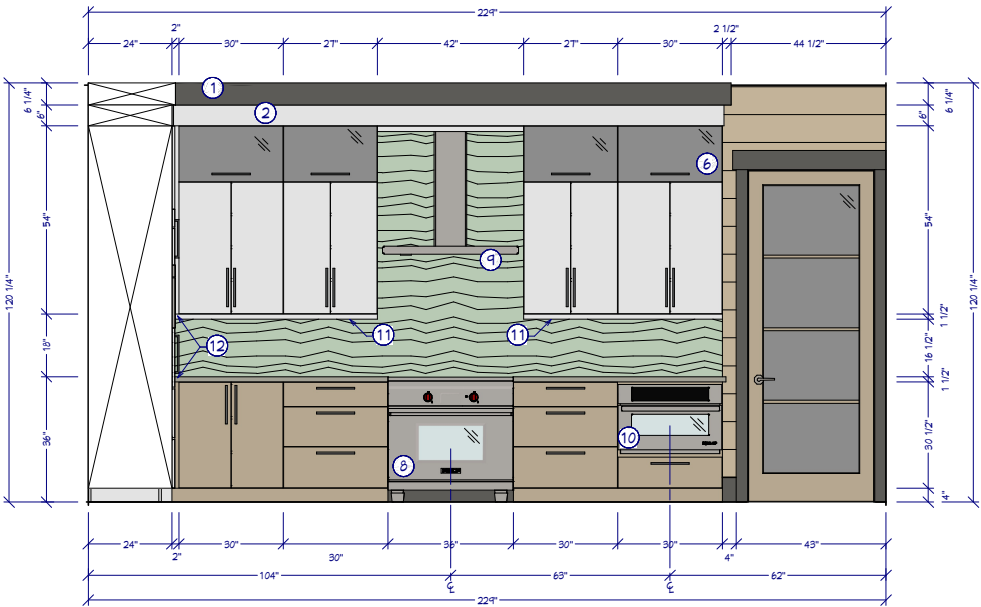
- 1 ALL CABINETS FRAMELESS, MAPLE OR ALDER
- 2 CONFIRM FINISH & STAIN/PAINT WITH CLIENT PRIOR TO ORDERING
- 3 CONFIRM DOOR & DRAWER STYLES WITH CLIENT PRIOR TO ORDERING
- 4 INSTALL HARDWARE ON SITE
- 5 INSTALL CROWN MOLDING ON SITE; CONFIRM PROFILE AND DIMENSION WITH HOME OWNER
- 6 CABINET SUPPLIER RESPONSIBLE FOR FINAL MEASUREMENTS & CABINET OPENINGS FOR APPLIANCES SPECIFICATIONS
- 7 ALL APPLIANCES TO BE ON DEDICATED CIRCUITS, UNO. REFER TO APPLIANCE SPECIFICATIONS FOR AMP/VOLTAGE REQUIREMENTS
- 8 USE MIN 6" DUCT FOR HOOD. CONFIRM HOOD IS 600 CFM MIN.
- 9 CONFIRM FINAL MATERIALS FOR BACKSPLASH AND COUNTERTOP WITH CLIENT PRIOR TO ORDERING
- 10 ALL DRAWERS TO BE TONGUE & GROOVE; GLIDES TO BE SOFT CLOSE
- 11 LED STRIP LIGHTS FOR WALL CABINETS AND UNDER ISLAND
- 12 UNDERCOUNTER GFCI ELECTRICAL PLUGS
- 13 COUNTER FABRICATION: CONFIRM ALL FIXTURE MEASUREMENTS AND CENTERLINES

KITCHEN KEY NOTES:

- ① SOFFIT W/ LED LIGHTING ABOVE
- ② CROWN MOLDING
- ③ WINE FRIDGE
- ④ PANELED FRIDGE SEE MFG. APPLIANCE SPECS FOR PANEL SIZES
- ⑤ BUILT-IN COFFEE
- ⑥ RAIN WATER GLASS
- ⑦ UTILITY CABINET SIDE MOUNT FOR MUD ROOM
- ⑧ INDUCTION COOK RANGE
- ⑨ COOK HOOD
- ⑩ MICROWAVE DRAWER
- ⑪ UNDER CAB LED LIGHTING
- ⑫ 2" FILLER
- ⑬ WASTE PULLOUT
- ⑭ POPUP OUTLET / USB
- ⑮ MITRE WATERFALL

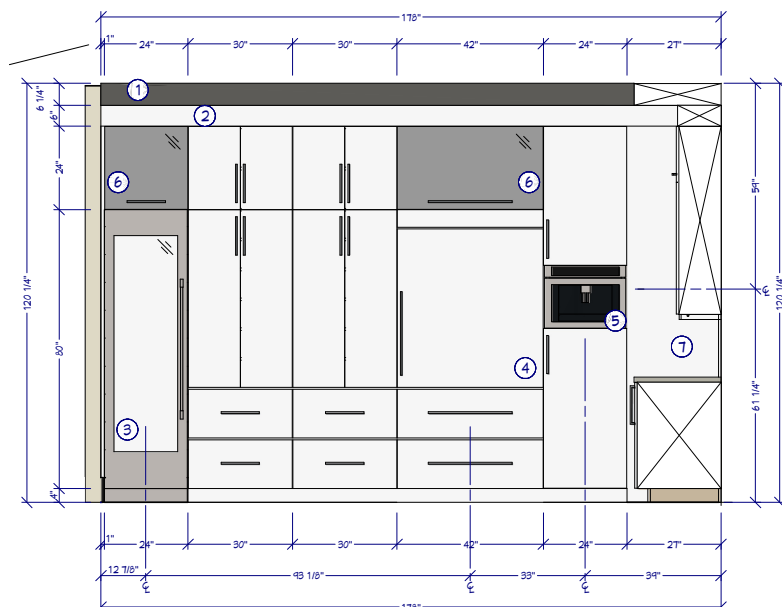
CABINET SCHEDULE

No.	Description	Quantity	Label	Cabinet Schedule				Description
				Qty	Width	Depth	Height	
C01	U3024108	2	30"	24"	108"			utility cabinet
C03	U2434108L	1	24"	34"	108"			utility cabinet
C04	U2424108R	1	24"	24"	108"			utility cabinet Built-in Coffee Station
C05	P0422424TH	1	24"	24"	24"			wall cabinet
C06	P0422424TH	1	42"	24"	24"			wall cabinet
C07	P02754	2	21"	12"	54"			wall cabinet
C08	U1124100	1	11"	24"	108"			utility cabinet filler
C09	B02	1	21"	24"	36"			base cabinet filler
C10	P0254	1	21"	12"	54"			wall cabinet filler
C11	30B30	2	30"	24"	36"			base cabinet
C12	1DB M04 30	1	30"	24"	36"			base cabinet Microwave Drawer
C13	B30	1	30"	24"	36"			base cabinet
C14	P0254	2	30"	12"	54"			wall cabinet
C15	30B21	2	21"	24"	37 1/2"			base cabinet
C16	P021	1	21"	24"	37 1/2"			base cabinet Waste Pullout
C17	S056	1	36"	24"	37 1/2"			Sink base cabinet
C18	B3412	1	34"	12"	37 1/2"			base cabinet
C19	B4212	2	42"	12"	37 1/2"			base cabinet



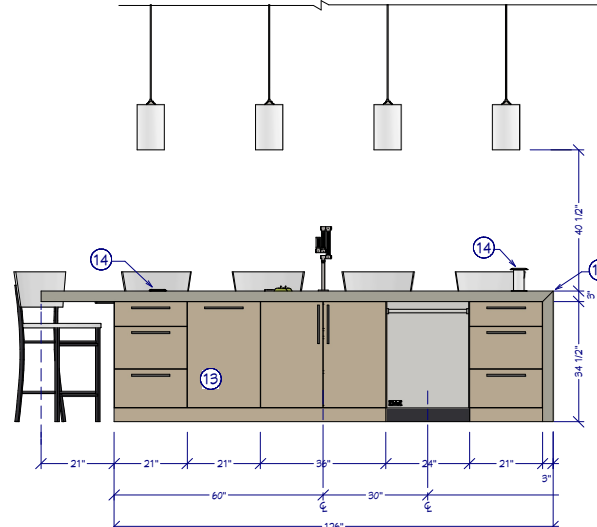
K1 MAIN WALL ELEVATION

1/2"=1'



K2 SIDE WALL ELEVATION

1/2"=1'



K3 FRONT ISLAND ELEVATION

1/2"=1'