

Chief Architect® X8

Download & Installation Instructions

Chief Architect, Inc.
6500 N. Mineral Dr.
Coeur d'Alene, Idaho 83815
chiefarchitect.com

Contents

Installation

What's Included with the Software	3
System Requirements	3
Downloading Chief Architect Software	4
Installing Chief Architect	4
Starting Chief Architect	7
Troubleshooting Problems	8
Program Updates	8
Installing on Multiple Computers	8
Uninstalling Chief Architect Software	9

Additional Resources

Tool Tips and the Status Bar	10
Help Contents and Index	10
Chief Architect Tutorials	11
Reference Manual & User's Guide PDFs	11
Tutorial Videos	11
Chief Architect Web Site	11
ChiefTalk User Forum	11

Installation

This section will help you install your Chief Architect software.

- What's Included with the Software
- System Requirements
- Downloading Chief Architect Software
- Installing Chief Architect
- Starting Chief Architect
- Troubleshooting Problems
- Program Updates
- Installing on Multiple Computers
- Uninstalling Chief Architect Software

What's Included with the Software

Your Chief Architect purchase includes the following:

- Chief Architect download manager
- Chief Architect Program DVD (optional purchase if program was downloaded)
- Hardware Lock (optional)
- Your Product Key, or software license activation code

System Requirements


In order to install and run Chief Architect X8 software, your computer system must meet the following minimum requirements:

- Windows® 10/8/7; Mac OS X® v10.10 (Yosemite) or newer
- Multi-core processor
- 2 GB of memory (32 bit); 4 GB of memory (64 bit)
- 5 GB of available hard disk space
- 512 MB dedicated video card or integrated graphics with 2014 or newer drivers
- Recommended minimum monitor resolution: 1152 x 864
- High speed Internet for registration, license authentication, deactivation, video access, content downloads
- DVD drive (to install from DVD)

Internet access for license authentication is required once every 14 days. For more information about system recommendations, visit our Web site at chiefarchitect.com.

Downloading Chief Architect Software

To download and install Chief Architect X8, begin by logging in to your Chief Architect account at chiefarchitect.com.

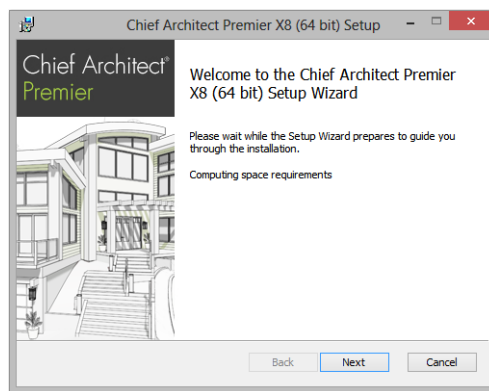
Browse to the Digital Locker page, click the Download  button, and save the file to your local hard drive. Select an easy to find Save in location on your computer, such as your Documents folder or Desktop, then click Save

Installing Chief Architect

When the installer file is completely downloaded, the Setup Wizard will launch automatically.

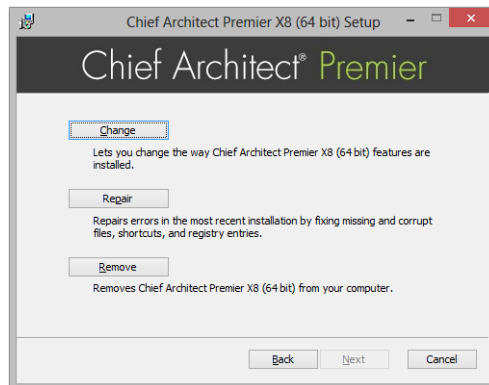
If it does not, browse to the location where you saved it, which is Documents\Downloads by default, then double-click on the file with the title of your Chief Architect program in its name, followed by a version number.

Setup Wizard Welcome



1. If you have not installed the program before, the Welcome window will display. Click **Next** to continue.

Setup Maintenance



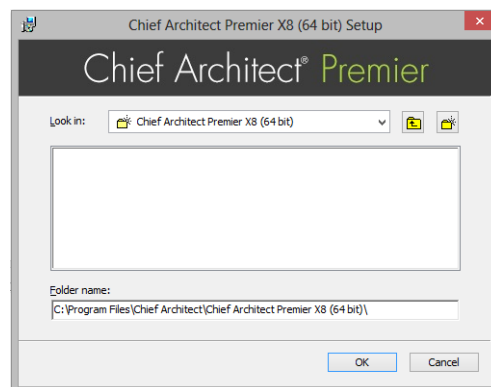
- If you have installed the program before, this window will display, allowing you to reinstall or uninstall the program. If you are installing the program for the first time, this window will not display.

License Agreement



- Read the License Agreement carefully. Before installing, you must **accept its terms and conditions**.
 - Click the **Advanced** button to specify an installation location or exclude supplementary content from being installed.
 - Click **Install** to install the software. The Setup Wizard will copy files to your hard disk, which may take a few minutes.

Choose Destination Location



- This window appears in the Windows version and only if you click the **Advanced** button, and then the **Change** button, in the previous windows.

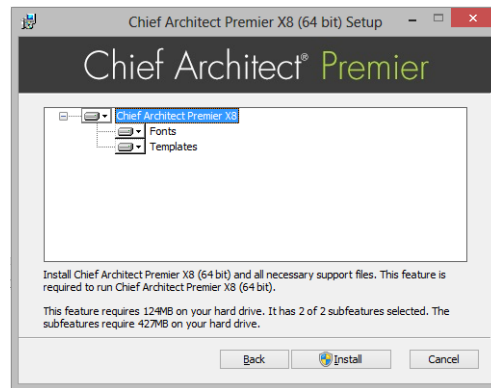
By default, the Windows version of the program installs in a folder with the same name as the program version located at C:\Program Files\Chief Architect.

You can, if you wish, choose a different destination folder on the local machine.

 - If you prefer a different location, click the drop-down arrow to the right of the **Look in** location and navigate to the desired location on your hard drive.
 - You can also type the full pathname of the installation directory in the **Folder name** field.
 - Click **OK** to proceed to the next window.

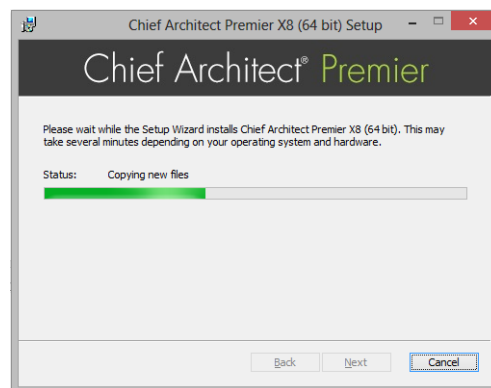
Note: Regardless of the location that you specify here, the program's library content will be installed in your computer's ProgramData folder.

Choose Items to Install



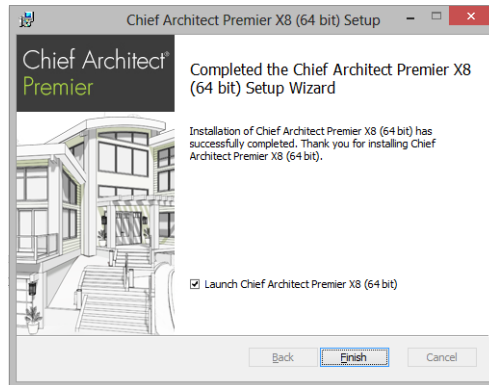
5. You can use this window to specify what features to install.
 - Click on a line item to select it. Information about its contents and hard drive space requirements displays beneath the list of features.
 - Click the drop-down arrow beside a line item to specify how it is installed. By default, **Entire feature will be installed** is selected for all line items.
 - Select **Entire feature will be unavailable** to prevent a selected feature from being installed. When this option is selected, a red X will display beside the line item's drop-down arrow.
 - Click **Install** to install the program and supplemental content as specified.

Install



6. Click **Install** to continue. The Setup Wizard will begin copying files to your hard disk after a few moments and a green progress bar in this window will show the status of this process. This may take a few minutes.
 - The installer checks your hard drive for enough space to install the software successfully. If it does not find enough space, a warning message will display. You may be able to resolve this issue by running the Disk Cleanup Utility on your system. To learn more, see www.microsoft.com/atwork/maintenance/speed.aspx.

Setup Wizard Complete

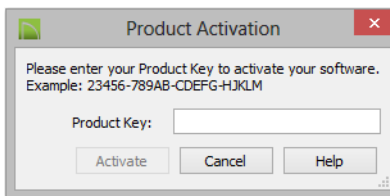


7. When all files have been copied, this dialog will display. Click **Finish** to launch Chief Architect.

Starting Chief Architect

You can use the Start menu or the shortcut on your desktop to start Chief Architect.

When you launch the program for the first time, the **Product Activation** dialog will open.



- Enter your **Product Key**, which is located in the account information from your download or on a sticker inside of your DVD case.
- Click the **Activate** button to launch the program. Not available unless a valid Product Key has been entered.

If your Product Key is not associated with a User Account on our web site, the **Register Chief Architect License** dialog will open next.

So that you can take full advantage of our online resources, click the **Register License** button and take a moment to associate your software license with a User Account on our web site, chiefarchitect.com.

Migrating Library Catalogs

If you have custom libraries from a previous program version on your computer, you will have an opportunity to convert them for use in Version X8. For details, click the Help button in the Migrate Library Catalogs dialog.

Troubleshooting Problems

If you encounter problems either downloading or registering your software, the following suggestions may be helpful.

- Make sure that you can visit our web site using your default web browser.
- Disable your firewall for the duration of the download, installation, and registration process.
- Disable other security applications, including anti-virus and download manager software, for the duration of the download, installation, and registration process.



Remember to re-enable all security applications and restore all settings when you are finished downloading, installing, and registering.

Program Updates

From time to time, Chief Architect releases downloadable program updates at chiefarchitect.com. When the program is launched, a dialog will inform you if an update is available.

- Click **Yes** to open your default web browser to the Program Updates section of the Chief Architect web site.
- Click **No** to launch Chief Architect.

At any time, you can select **Help> Download Program Updates** from the Chief Architect menu to launch your web browser to the Program Updates section of the Chief Architect web site.

Installing on Multiple Computers

A license of Chief Architect can only be active on one computer at any given time. If you have been running the software on one computer and wish to run it on a different computer, or if you wish to rename your computer, you must deactivate your license first.

For details, please refer to the **End User License Agreement**, found in both the program installer and the User's Guide .pdf.

To deactivate a Chief Architect license

1. Launch the program on the computer where the license is active.
2. Select **Help> Deactivate License** from the program menu.
3. Click **Yes** to confirm that you wish to deactivate the license.
4. After a pause, the program will close.

To manage license activations online

1. Visit chiefarchitect.com and log in to your Account.
2. Browse to the **Digital Locker: Software Downloads and Product Keys** page.
3. Click the link to **Manage your Active Licenses**.
4. Click the **Deactivate** button to deactivate your license on the computer where it is currently active, making it available for use on another computer.

If you have both the 32 bit and the 64 bit version of the software installed on a computer and deactivate either one, both will be deactivated.

If you are using hardware lock security, you do not need to deactivate your license. Instead, make sure the program is not running and unplug the lock. Then attach the lock to the computer you wish to use before launching Chief Architect.

Uninstalling Chief Architect Software

Chief Architect can be removed from a Mac by moving it to the Trash. This does not deactivate the license, however, so you may want to deactivate your license before removing the program.

On Windows computers, there are two ways to remove Chief Architect: from the Control Panel and using the Setup Wizard on the program disk. Please note that if you do not have an active Internet connection, your license will not be deactivated.

To remove the program using the Control Panel

1. Open the Windows Control Panel.
2. Navigate to Programs and Features.
3. Find the Chief Architect program in the list and click **Remove**.

To remove the program using the Setup Wizard

1. Launch your downloaded program installer or place the disc in the DVD drive.
2. On the Setup Maintenance page of the Setup Wizard, select **Remove** and click **Next**.
3. A message will ask if you would like to remove the selected application and its components. Click **Yes**.

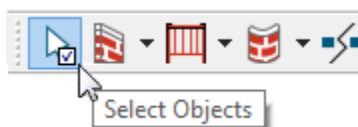
Additional Resources

There are many forms of help in Chief Architect, including: Tool Tips, the Status Bar, online Help, written tutorials, and product documentation in PDF format. Still more valuable information is available on Chief Architect's web site, chiefarchitect.com.

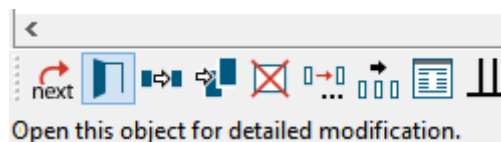
- Tool Tips and the Status Bar
- Help Contents and Index
- Chief Architect Tutorials
- Reference Manual & User's Guide PDFs
- Tutorial Videos
- Chief Architect Web Site
- ChiefTalk User Forum

Tool Tips and the Status Bar


When you move your mouse pointer over a toolbar button or menu item, a Tool Tip displays a brief description of the tool.



More information displays in the Status Bar at the bottom of the program window.



Help Contents and Index

 Chief Architect's Help Contents and Index is a browsable, searchable resource that provides a description of the tools and dialogs in the program. It can be accessed in several ways:

- Select **Help > Launch Help** from the menu.

- Place your pointer over any menu item, toolbar button, or selected object. When you see a Tool Tip in the Status Bar, press the **F1** key.
- Click the **Help** button in any dialog.

Chief Architect Tutorials

Chief Architect includes a collection of written tutorials that describe how to create a plan in the program. These tutorials can be accessed on the Contents tab of Chief Architect Help or by selecting **Help> View User's Guide** from the program menu.

Reference Manual & User's Guide PDFs

The complete contents of the Chief Architect Help is available in PDF format. Select **Help> View Reference Manual** or **Help> View User's Guide** to view either document in your default web browser.

Tutorial Videos

Chief Architect offers a searchable collection of online training videos that show you how to perform many tasks in the program. Select **Help> View Online Help Videos** to launch your default web browser to video.chiefarchitect.com/videos.

Some Chief Architect Help pages also feature links to Tutorial Videos that are relevant to the information on the page.

 Click to view related online training videos

Chief Architect Web Site

Our web site, chiefarchitect.com, has answers to many frequently asked technical support questions. The online Knowledge Base contains a variety of articles describing how to resolve common technical problems and achieve specific design goals. New on-line tutorials are added regularly, and we invite you to visit our web site whenever you like.

ChiefTalk User Forum

Other Chief Architect users have a wealth of knowledge they are willing to share. You can link to the ChiefTalk user forum by selecting **Help> ChiefTalk** from the Chief Architect program menu or by going directly to chieftalk.chiefarchitect.com.

Chief Architect strives to make our documentation as helpful as possible for all of our customers. Please send any questions, comments, or feedback to documentation@chiefarchitect.com.