



**NOTES:**  
 RENDERINGS ARE NOT TO SCALE; ALL RENDERINGS ARE FOR ARTISTIC DEPICTION ONLY. PLAN UPDATES MAY NOT BE REFLECTED IN RENDERINGS. RENDERINGS SHALL NOT BE USED FOR CONSTRUCTION.

BASE BOARDS SHALL BE 6" IN ALL ROOMS. UNO. FINAL FINISHES SHALL BE CONFIRMED WITH THE HOME OWNER PRIOR TO APPLICATION.

PROVIDE ONE SMOKE DETECTOR IN EACH ROOM AND ONE IN EACH CORRIDOR ACCESSING BEDROOMS. CONNECT SMOKE DETECTORS TO HOUSE POWER AND INTER-CONNECT SMOKE DETECTORS TO HOUSE POWER AND INTER-CONNECT SMOKE DETECTORS TO HOUSE POWER AND INTERCONNECT SO THAT, WHEN ANY ONE IS TRIPPED, THEY ALL WILL SOUND. PROVIDE BATTERY BACKUP FOR ALL UNITS.

PROVIDE COMBUSTION AIR VENTS (W/SCREEN AND BACK DAMPER) FOR GAS FIRE-PLACE AND ANY OTHER APPLIANCES WITH AN OPEN FLAME.

BATHROOMS AND UTILITY ROOMS ARE TO BE VENTED TO THE OUTSIDE WITH A FAN CAPABLE OF PRODUCING A MINIMUM OF 5 AIR EXCHANGES PER HOUR.

RANGE HOODS ARE ALSO TO BE VENTED TO THE OUTSIDE.

ELECTRICAL RECEPTACLES IN BATHROOMS, KITCHENS AND GARAGES SHALL BE G.F.I. OR G.F.I.C. PER NATIONAL ELECTRICAL CODE REQUIREMENTS.



NO.	DESCRIPTION	BY	DATE

SHEET TITLE:  
**PRESENTATION VIEWS**

PROJECT DESCRIPTION:  
**Copper Ridge**  
 Sample Plan

DRAWINGS PROVIDED BY:  
**Chief Architect**  
 www.chiefarchitect.com  
 800.482.4433

DATE:  
 Jan. 2012

SCALE:

SHEET:

**A-1**

# Copper Ridge Home Plan

**GENERAL NOTES AND SPECIFICATIONS**

THE GENERAL CONTRACTOR SHALL FULLY COMPLY WITH ALL STATE AND LOCAL CODE REQUIREMENTS. THE CONTRACTOR SHALL ASSUME FULL RESPONSIBILITY FOR ANY WORK KNOWINGLY PERFORMED CONTRARY TO SUCH LAWS, ORDINANCES, OR REGULATIONS. THE CONTRACTOR SHALL ALSO PERFORM COORDINATION WITH ALL UTILITIES AND STATE SERVICE AUTHORITIES.

WRITTEN DIMENSIONS ON THESE DRAWINGS SHALL HAVE PRECEDENCE OVER SCALED DIMENSIONS. THE GENERAL CONTRACTOR SHALL VERIFY AND IS RESPONSIBLE FOR ALL DIMENSIONS (INCLUDING ROUGH OPENINGS) AND CONDITIONS ON THE JOB AND MUST NOTIFY THIS OFFICE OF ANY VARIATIONS FROM THESE DRAWINGS.

DESIGN CRITERIA: 2006 IRC AND IBC  
 ROOF: 50 PSF SNOW LOAD  
 \*8 PSF TOP CHORD DL.  
 \*7 PSF BOTTOM CHORD DL.  
 \*5 PSF NET WIND UPLIFT.

FLOOR: 40 PSF LL.  
 \*10 PSF TOP CHORD DL.  
 \*5 PSF BOTTOM CHORD DL.

SOIL: \*2,000 PSF ALLOWABLE (ASSUMED). TO BE AT TIME OF EXCAVATION  
 FROST DEPTH: \*2'-0"  
 SEISMIC ZONE: C.  
 WIND: 90 MPH (90 MPH 3 SEC GUST), EXPOSURE C.

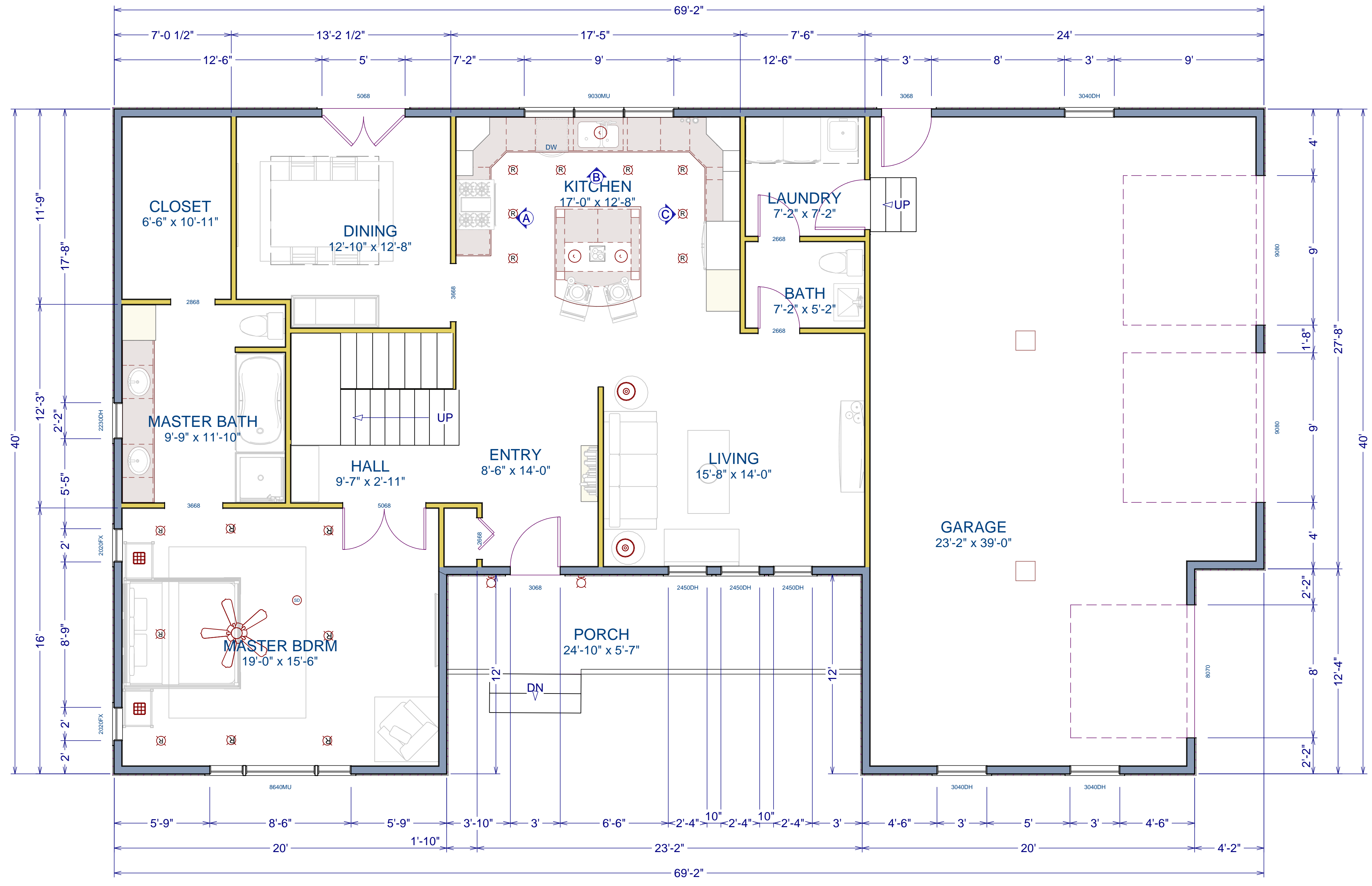
PLEASE SEE ADDITIONAL NOTES CALLED OUT ON OTHER SHEETS.

**BUILDING PERFORMANCE:**

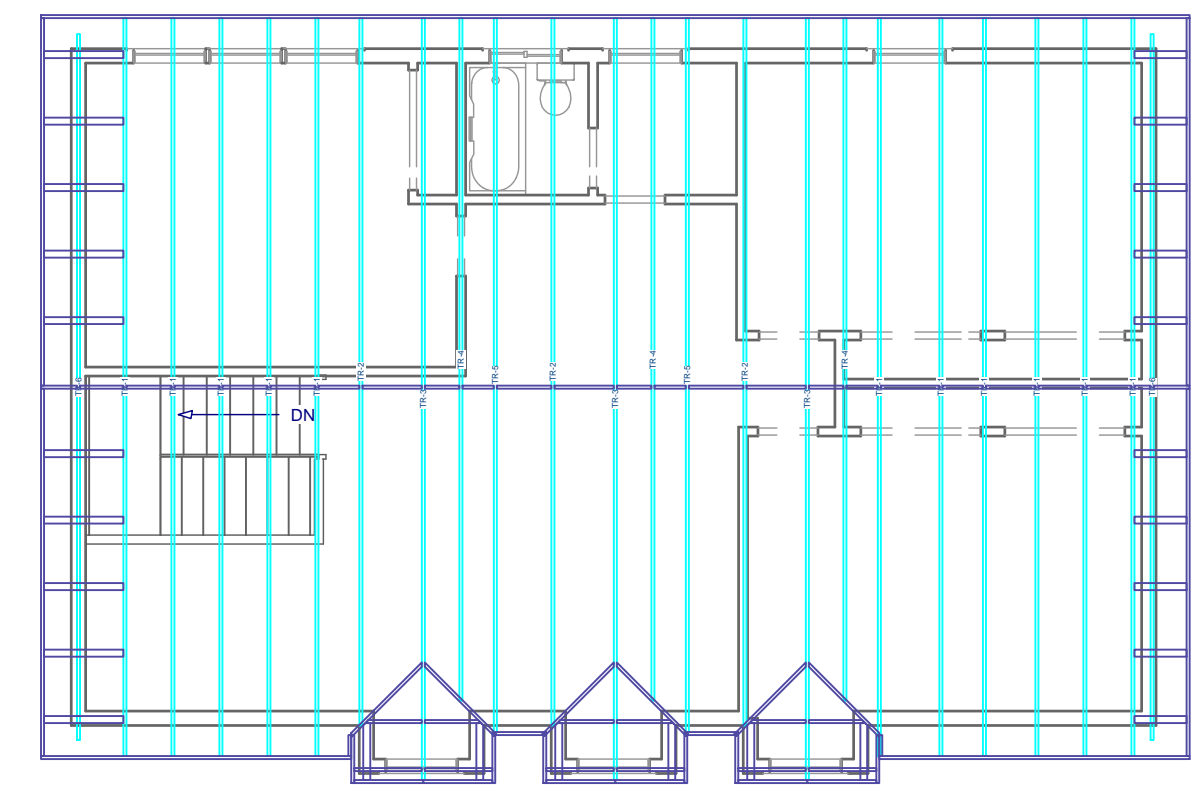
HEAT LOSS CALCULATIONS SHALL COMPLY WITH THE REQUIREMENTS OF REGIONAL AND LOCAL CODES. SEE CALCULATIONS. PORCHES, DECKS, FOUNDATION, FIREPLACE ENCLOSURES, AND GARAGE AREAS NOT INCLUDED IN LIVING AREA. ALL EXHAUST FANS TO BE VENTED DIRECTLY TO THE EXTERIOR. ALL PENETRATIONS OF THE BUILDING ENVELOPE SHALL BE SEALED WITH CAULK OR FOAM.

**STRUCTURAL ENGINEER:** Engineer's Information Here  
**DESIGNER:** Designer's Name Here  
 Chief Architect, Inc.  
 www.chiefarchitect.com  
**BUILDER:** Builder's Information Here





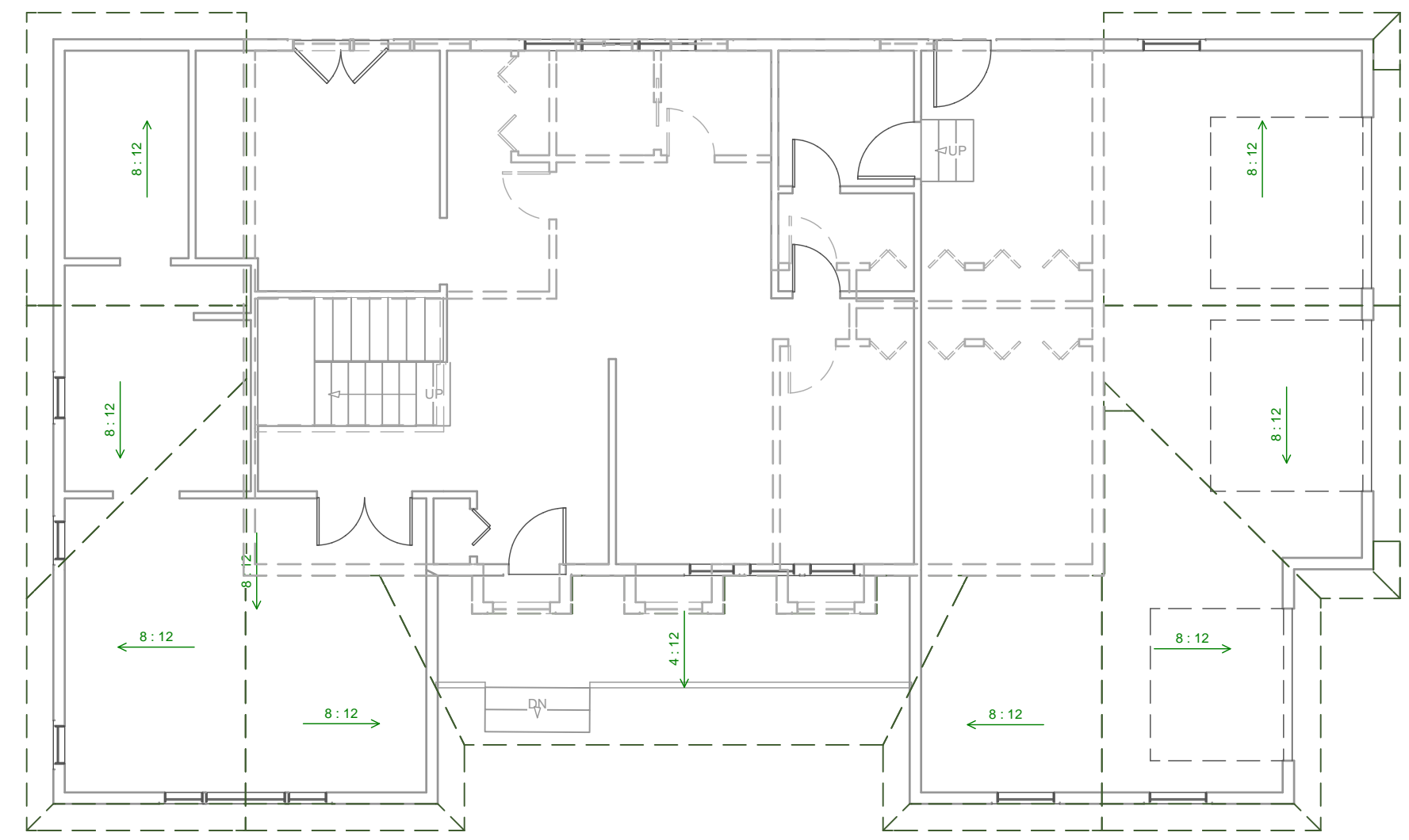
**FIRST FLOOR PLAN**  
1/4" = 1'



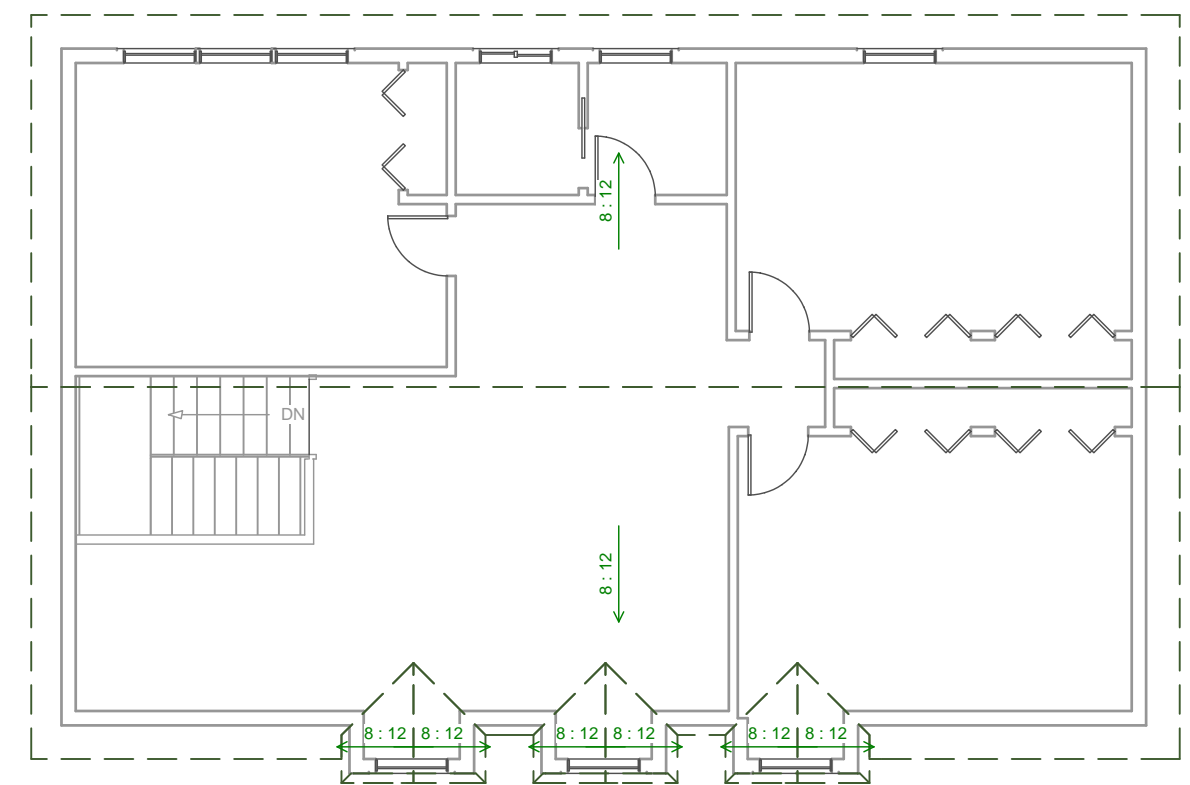
**SECOND FLOOR FRAMING PLAN**  
1/8" = 1'



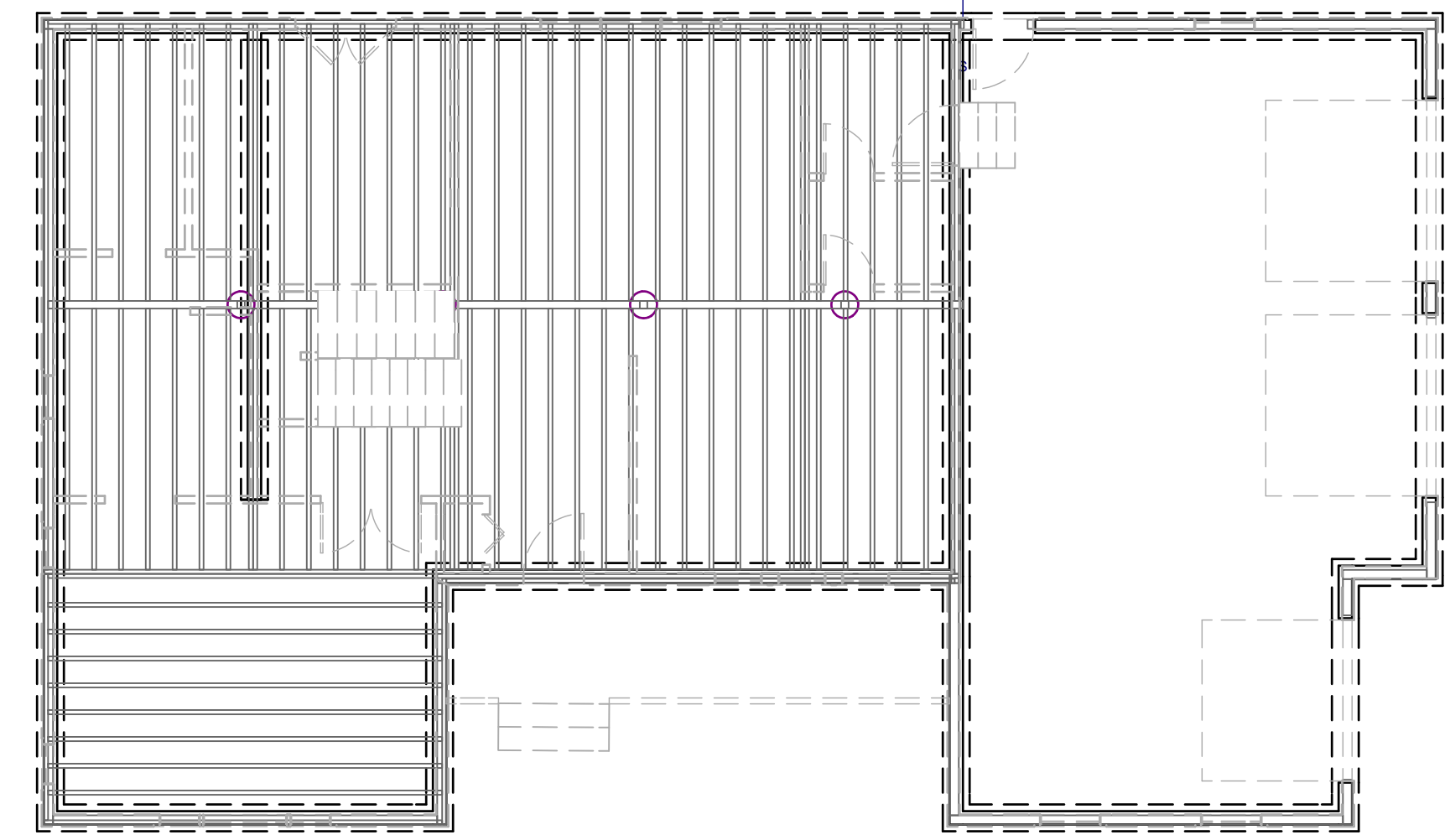
**FIRST FLOOR FRAMING PLAN**  
1/8" = 1'



**ROOF PLAN & SECOND FLOOR REF. OVERLAY**  
1/8" = 1'



**SECOND FLOOR ROOF PLAN**  
1/8" = 1'



**FOUNDATION PLAN**  
1/4" = 1'



NO.	DESCRIPTION	BY	DATE

SHEET TITLE:  
**FLOOR PLAN**  
ROOF/FRAMING LAYOUT

PROJECT DESCRIPTION:  
**Copper Ridge**  
Sample Plan

DRAWINGS PROVIDED BY:  
**Chief Architect**  
www.chiefarchitect.com  
800.482.4433

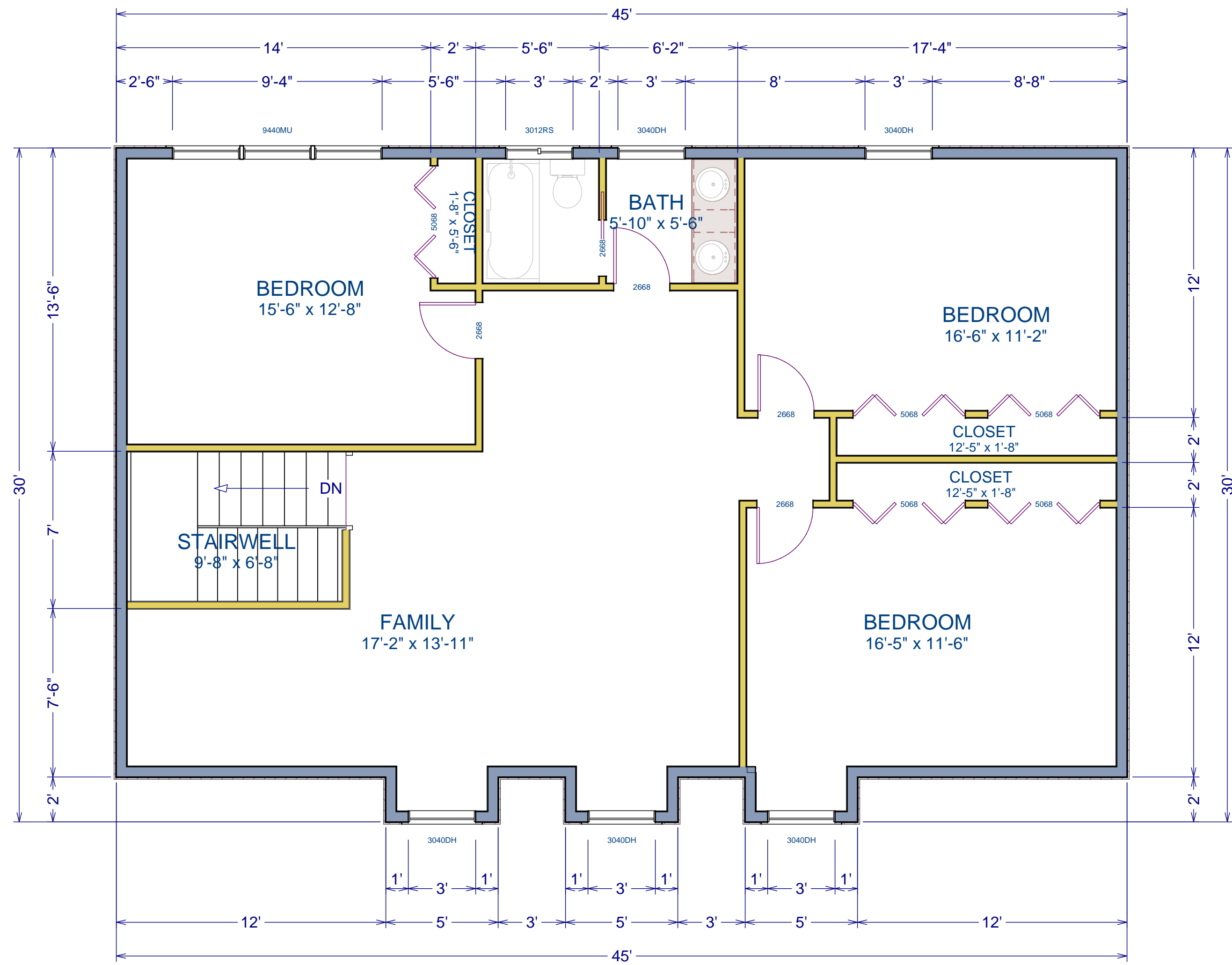
DATE:

Jan. 2012

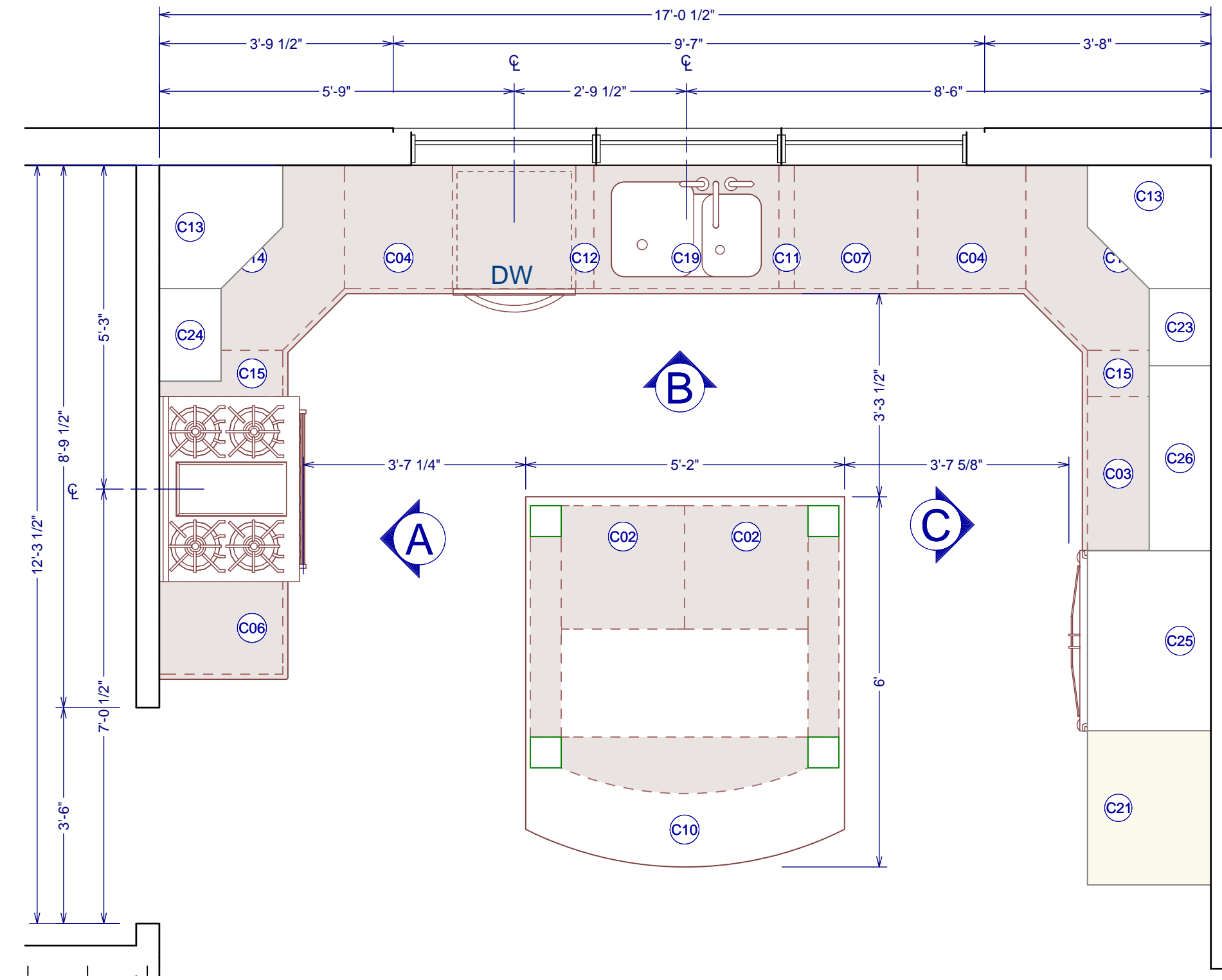
SCALE:

SHEET:

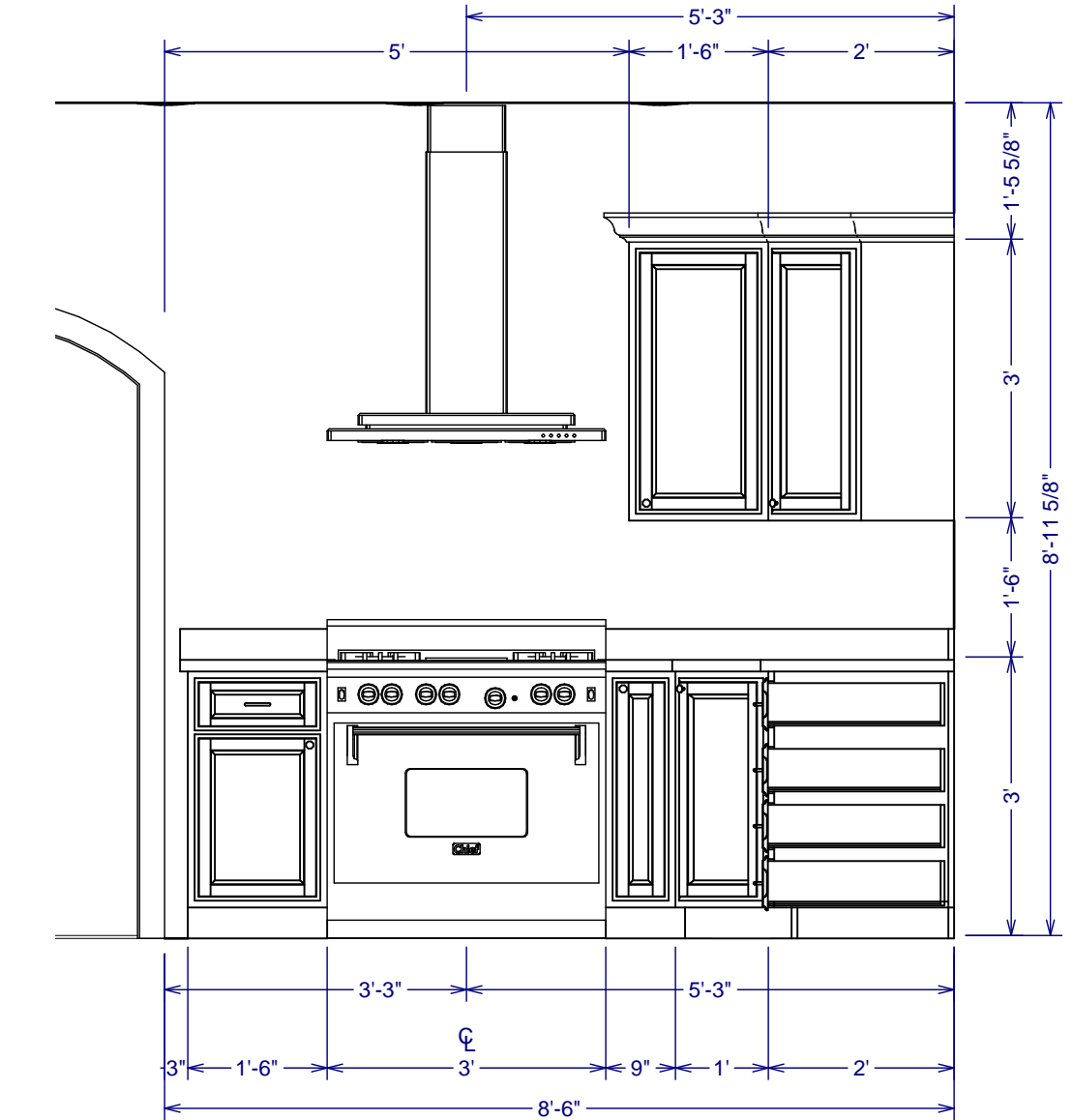
**A-2**



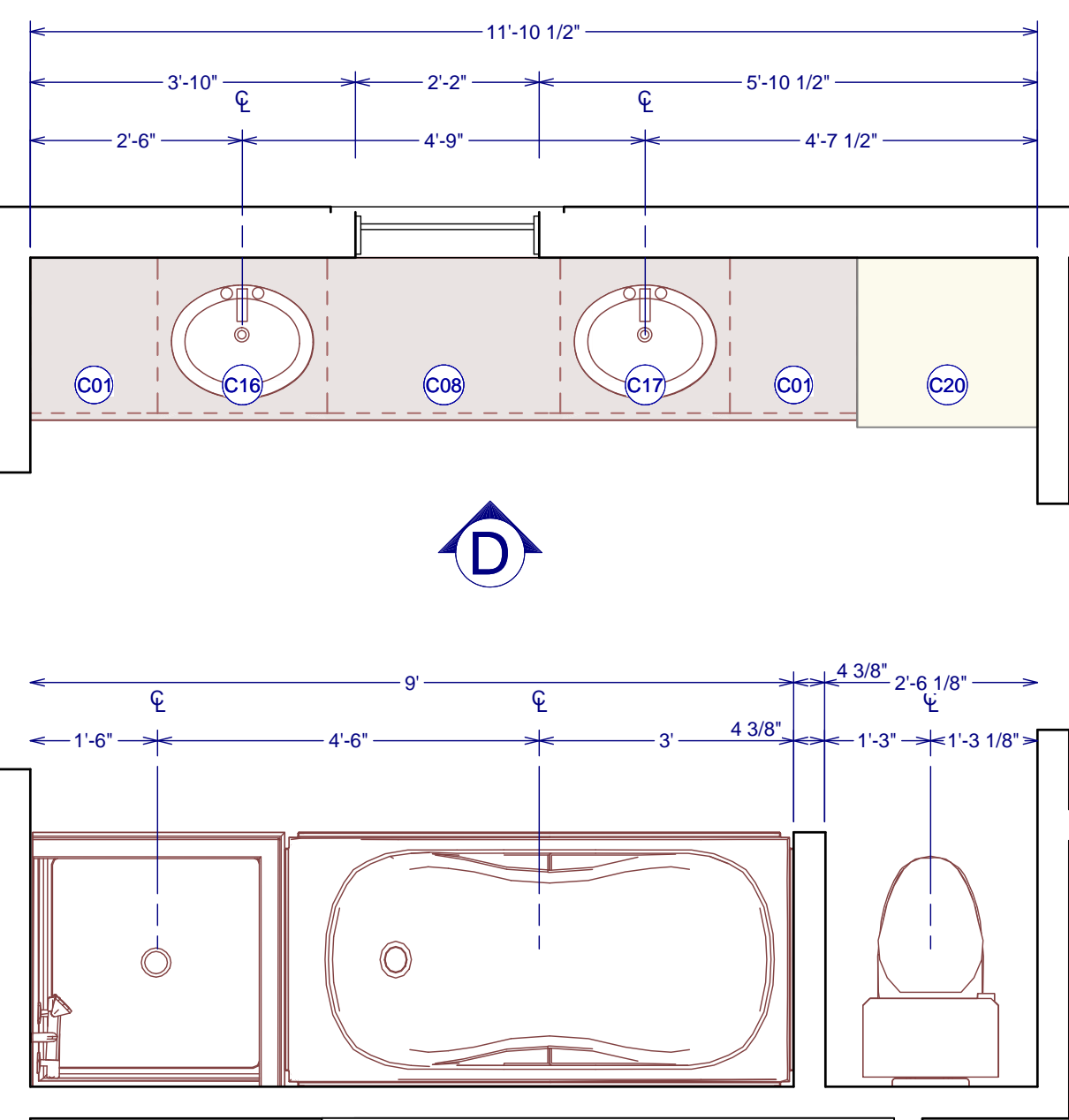
SECOND FLOOR PLAN  
1/4" = 1'



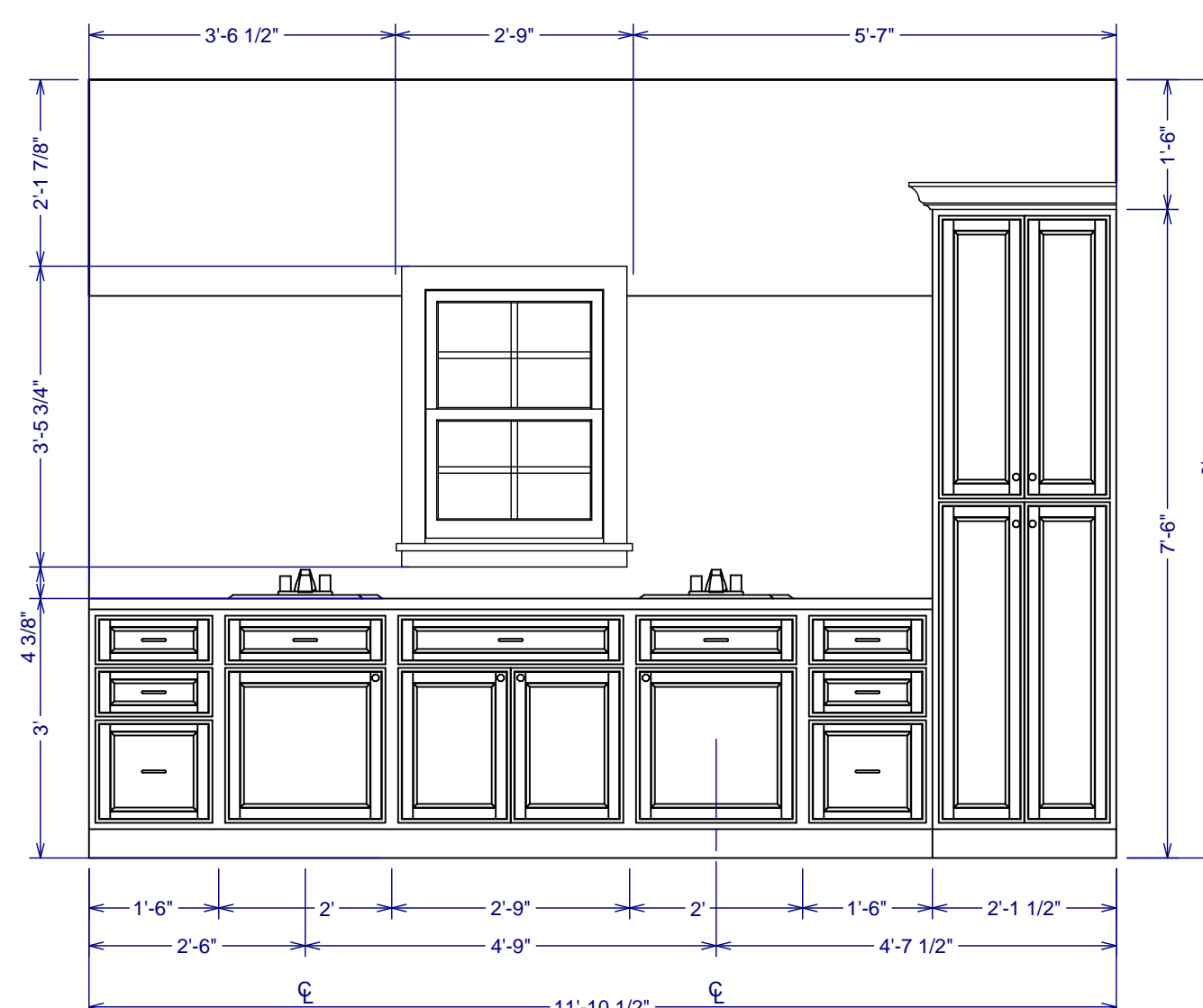
KITCHEN FLOOR PLAN  
1/2" = 1'



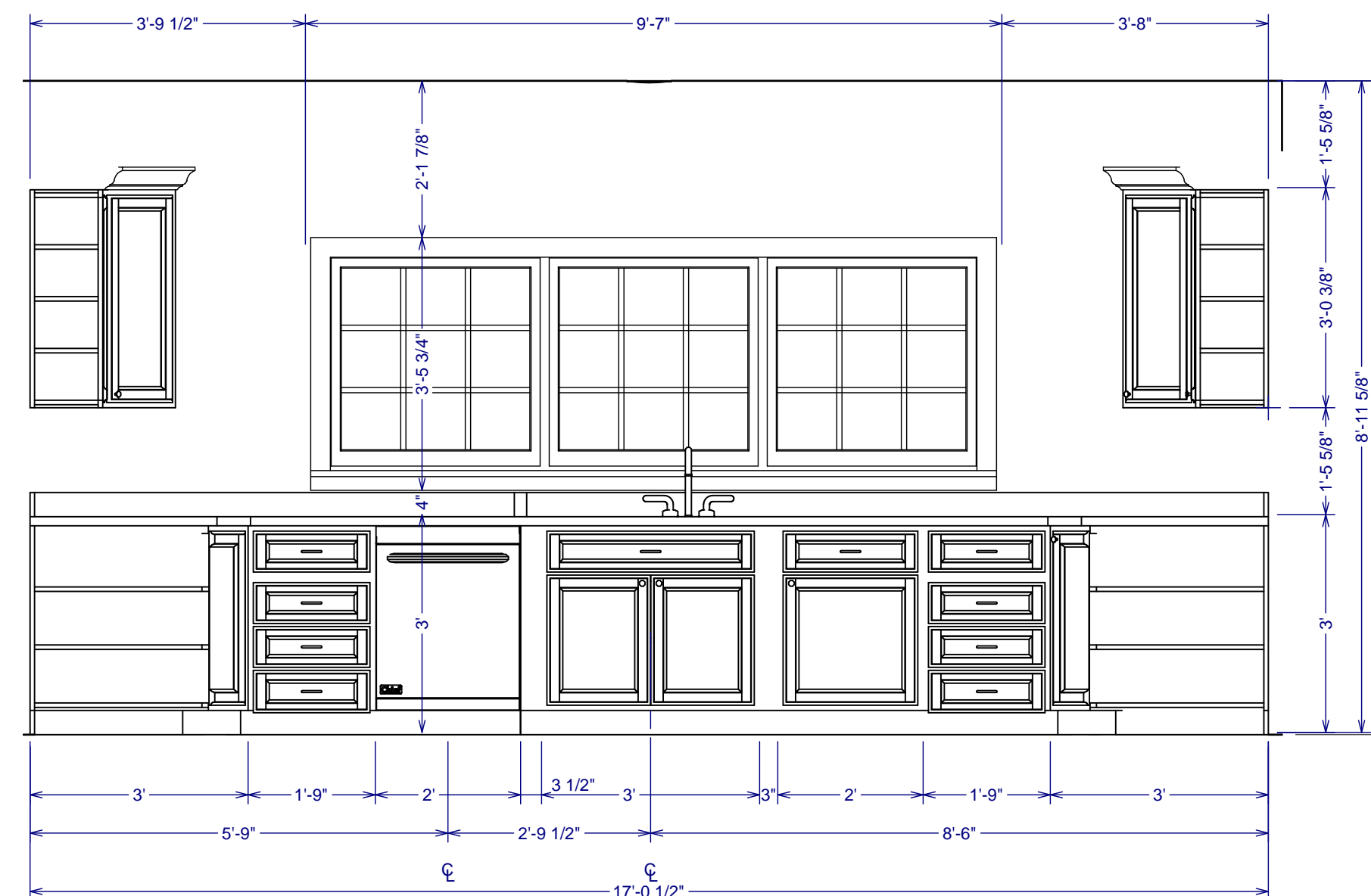
WALL ELEVATION A  
1/2" = 1'



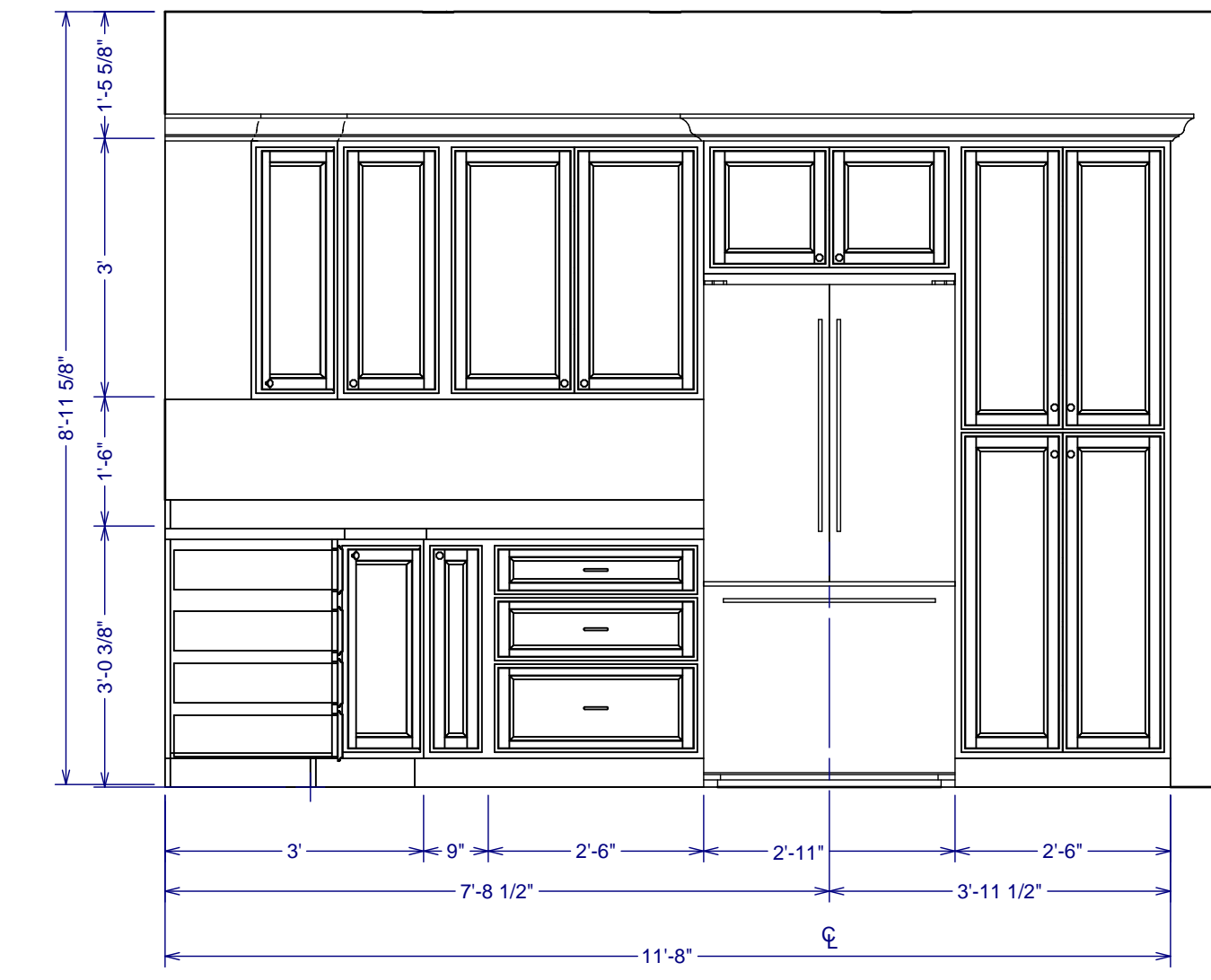
MASTER BATH FLOOR PLAN  
1/2" = 1'



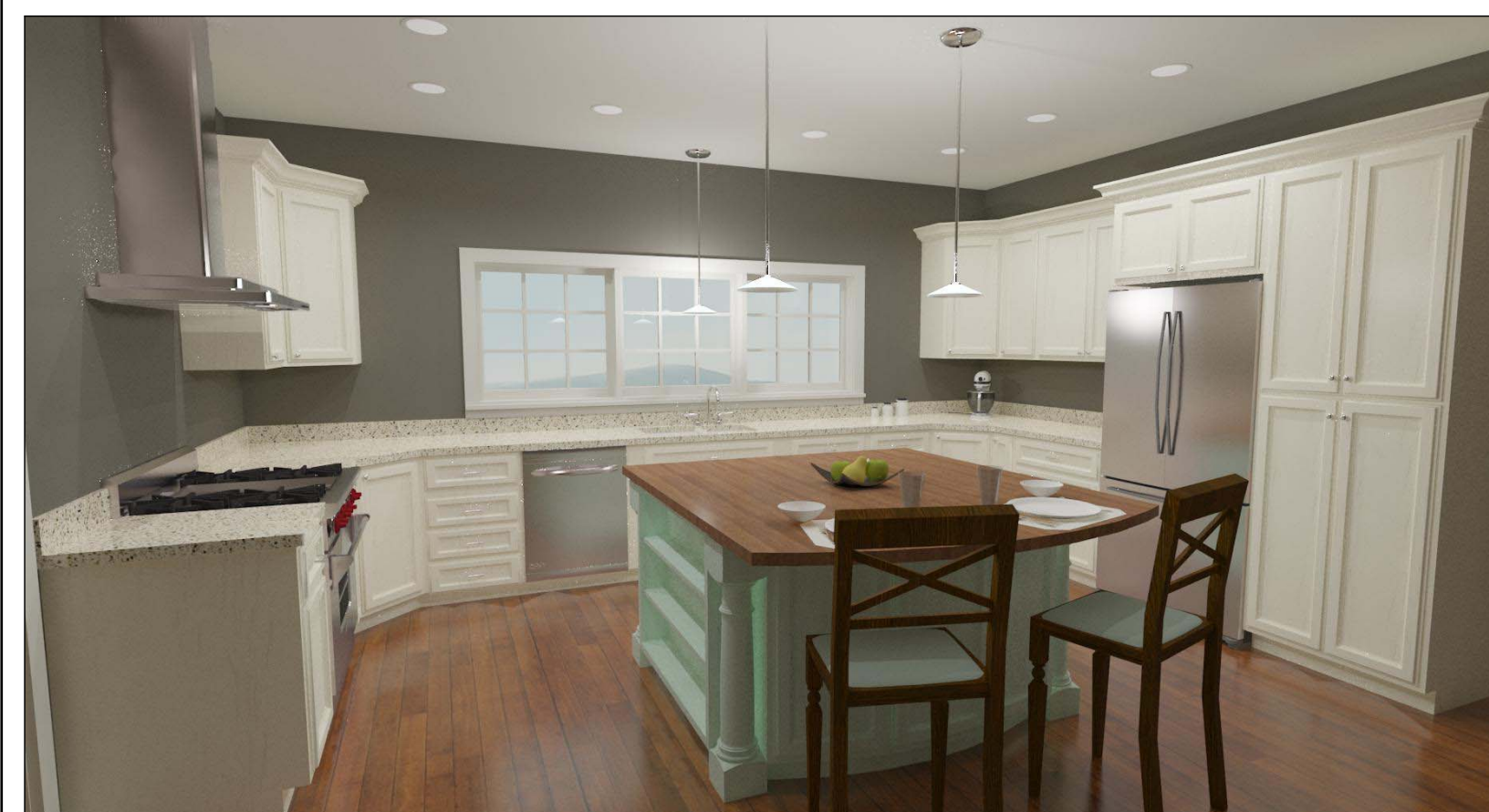
MASTER BATH CABINET ELEVATION  
1/2" = 1'



WALL ELEVATION B  
1/2" = 1'



WALL ELEVATION C  
1/2" = 1'



CABINET SCHEDULE							
NUMBER	LABEL	QTY	FLOOR	WIDTH	DEPTH	HEIGHT	DESCRIPTION
C01	3DB1822	2	1	13"	24"	36"	BASE CABINET
C02	3DB24	2	1	24"	24"	36"	BASE CABINET
C03	3DB30	1	1	30"	24"	36"	BASE CABINET
C04	4DB21	2	1	21"	24"	36"	BASE CABINET
C05	B1222R	1	2	12"	22"	36"	BASE CABINET
C06	B18	1	1	18"	24"	36"	BASE CABINET
C07	B24R	1	1	24"	24"	36"	BASE CABINET
C08	B3322	1	1	33"	22"	36"	BASE CABINET
C09	B396	2	1	39"	6"	36"	BASE CABINET
C10	B496	1	1	49"	6"	36"	BOW FRONT BASE CABINET
C11	BF3	1	1	3"	24"	36"	FILLER BASE CABINET
C12	BF4	1	1	3 1/2"	24"	36"	FILLER BASE CABINET
C13	DCW2436R	2	1	24"	24"	36"	CORNER WALL CABINET
C14	PHB36R	2	1	36"	36"	36"	CORNER BASE CABINET
C15	PHBR	2	1	9"	24"	36"	BASE CABINET
C16	SB2422L	1	1	24"	22"	36"	BASE CABINET
C17	SB2422R	1	1	24"	22"	36"	BASE CABINET
C18	SB2722	2	2	27"	22"	36"	BASE CABINET
C19	S336	1	1	36"	24"	36"	BASE CABINET
C20	U262490	1	1	25 1/2"	24"	90"	UTILITY CABINET
C21	U302490	1	1	30"	24"	90"	UTILITY CABINET
C22	U401260	1	1	40 7/16"	12"	60"	UTILITY CABINET
C23	W1536R	1	1	15"	12"	36"	WALL CABINET
C24	W1536R	1	1	15"	12"	36"	WALL CABINET
C25	W351924	1	1	35"	24"	18 1/2"	WALL CABINET
C26	W3636	1	1	36"	12"	36"	WALL CABINET



NO.	DESCRIPTION	BY	DATE

SHEET TITLE:  
SECOND FLOOR,  
KITCHEN, MASTER BATH

PROJECT DESCRIPTION:  
Copper Ridge  
Sample Plan

DRAWINGS PROVIDED BY:  
Chief Architect  
www.chiefarchitect.com  
800.482.4433

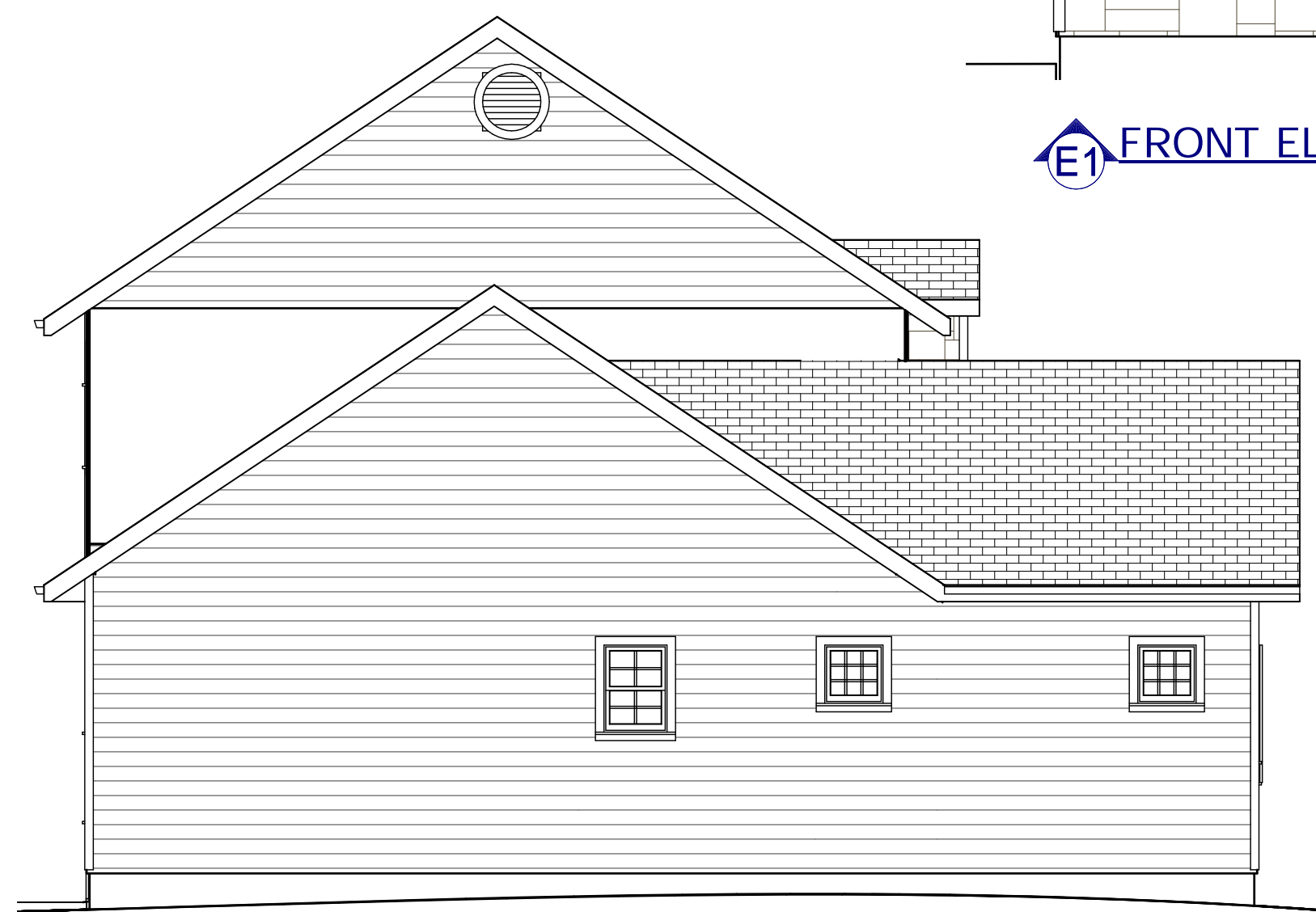
DATE:  
Jan. 2012

SCALE:

SHEET:  
A-3



**E1 FRONT ELEVATION**  
1/4" = 1'



**E4 LEFT ELEVATION**  
3/16" = 1'



**E2 RIGHT ELEVATION**  
3/16" = 1'



**E3 REAR ELEVATION**  
1/4" = 1'



NO.	DESCRIPTION	BY	DATE

SHEET TITLE:  
**ELEVATIONS**

PROJECT DESCRIPTION:  
**Copper Ridge**  
Sample Plan

DRAWINGS PROVIDED BY:  
**Chief Architect**  
www.chiefarchitect.com  
800.482.4433

DATE:

Jan. 2012

SCALE:

SHEET:

**A-4**